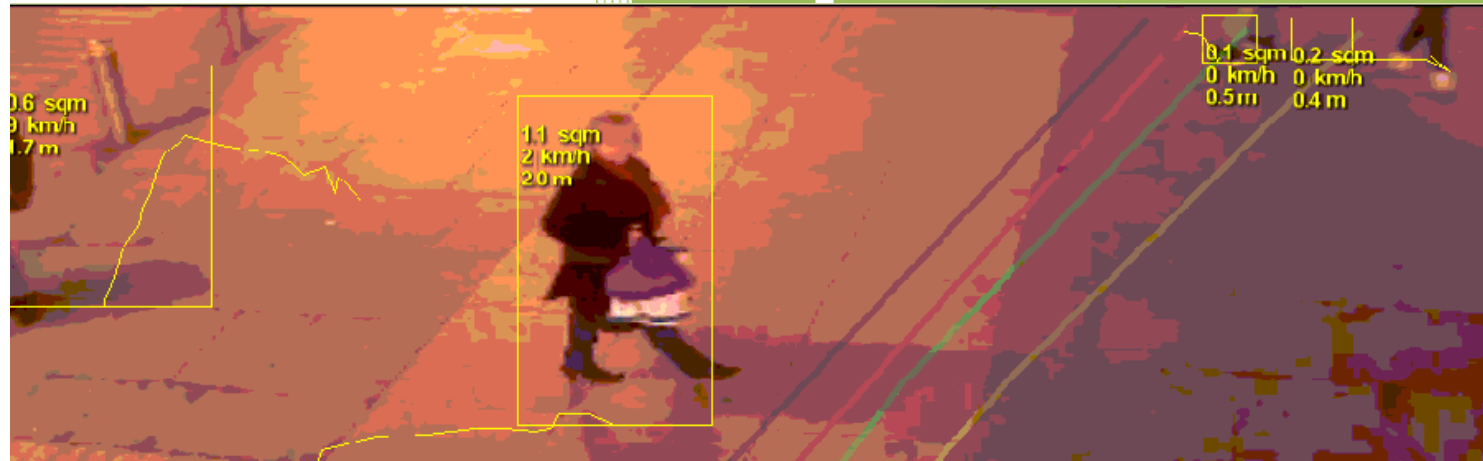


July 2015- Sept 2015



Cork City Pedestrian Counter Report#

Engine	Id	Rule	Zone Name	Object Class	Start Time	End Time
0	3	Directional Violation	Zone 0	Person	2015-03-13 19:01:18	2015-03-13 19:01:18
0	2	Directional Violation	Zone 1	Person	2015-03-13 19:01:15	2015-03-13 19:01:15
0	1	Directional Violation	Zone 0	Person	2015-03-13 19:00:06	2015-03-13 19:00:06
0	0	Directional Violation	Zone 0	Person	2015-03-13 18:59:53	2015-03-13 18:59:53

Disclaimer

Cork City Council has produced this report based on information extracted from our Pedestrian Counter Monitoring System. Although care has been taken to ensure the accuracy and completeness of the information, Cork City Council accepts no liability for the accuracy of the content, or for the consequences of any uses or actions taken on the basis of the information provided.

Sarah Greene

Cork City Council

July 2015-Sept 2015

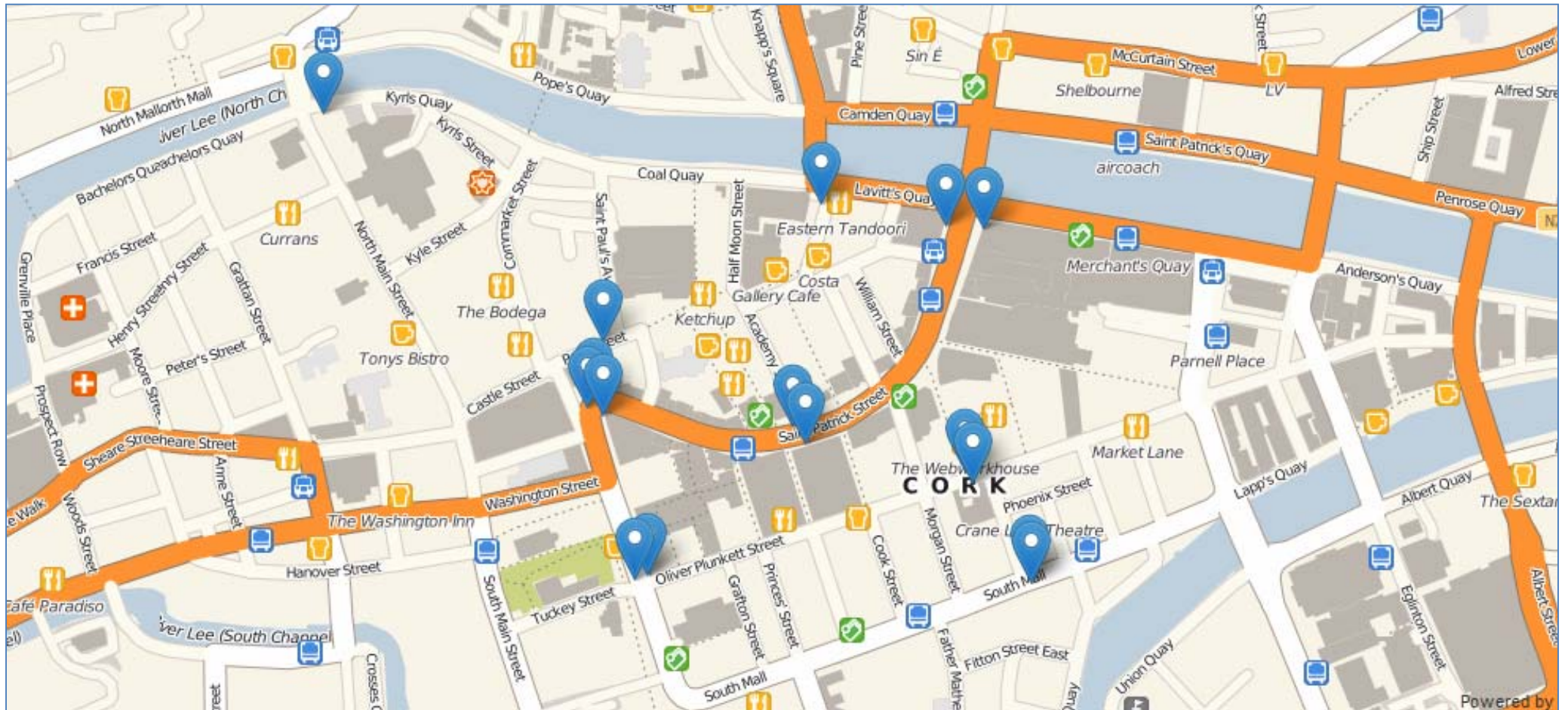
Outputs from the:

Cork City Council Pedestrian Counter Web

- ❖ This report illustrates trends in data extracted from Cork City Council Pedestrian Counter System, which comprises 16 city centre cameras, recording pedestrian movements 24 hours a day, 7 days a week.
- ❖ The report contains the following information:
 - ◆ Photos showing camera location & view being reported
 - ◆ Graphs of the weekly variations in the total number of pedestrians per street surveyed in 2014
 - ◆ Graphs comparing weekly total pedestrians in July – Sept 2014 compared to July – Sept 2015 for each street.
 - ◆ A graph to show the weekly totals for all sites in 2014
 - ◆ A graph to show the weekly totals for all sites Jan – Sept 2015 to allow comparisons of different areas.
- ❖ Data interruptions occur periodically due to interruptions in power supply or camera interference / blockages from signs flags etc. For interruptions over short periods, missing data is estimated from the recorded data. Data interruptions for longer periods are noted on the relevant graphs.

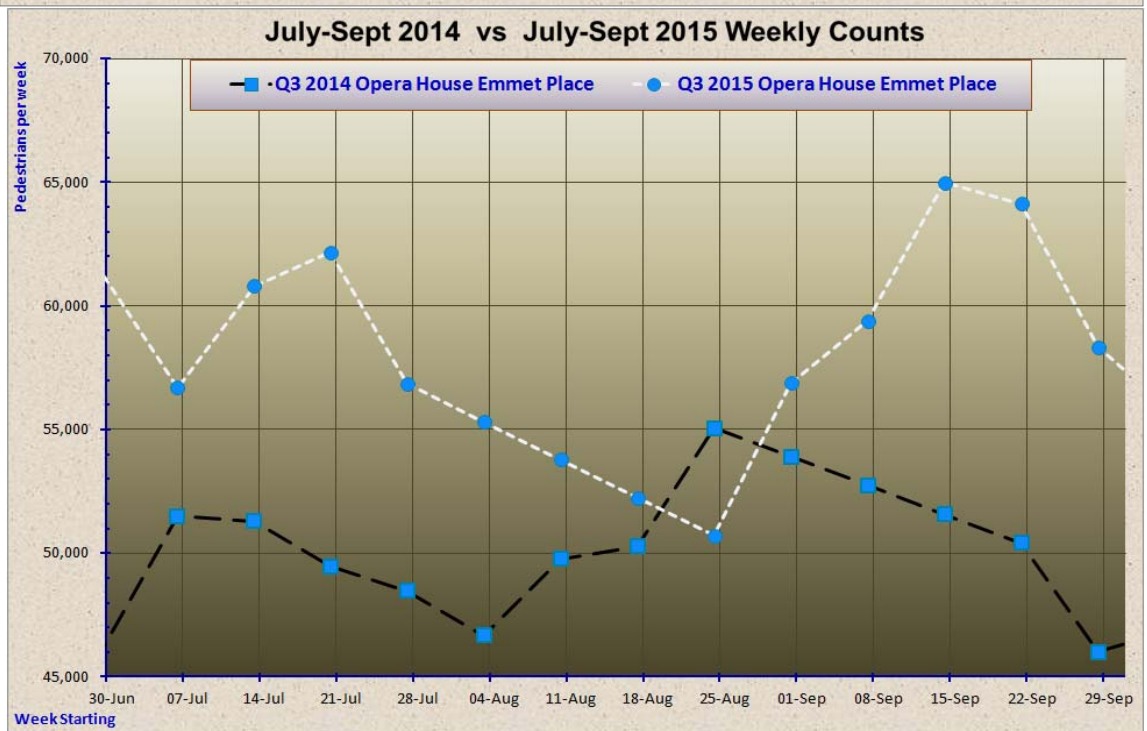
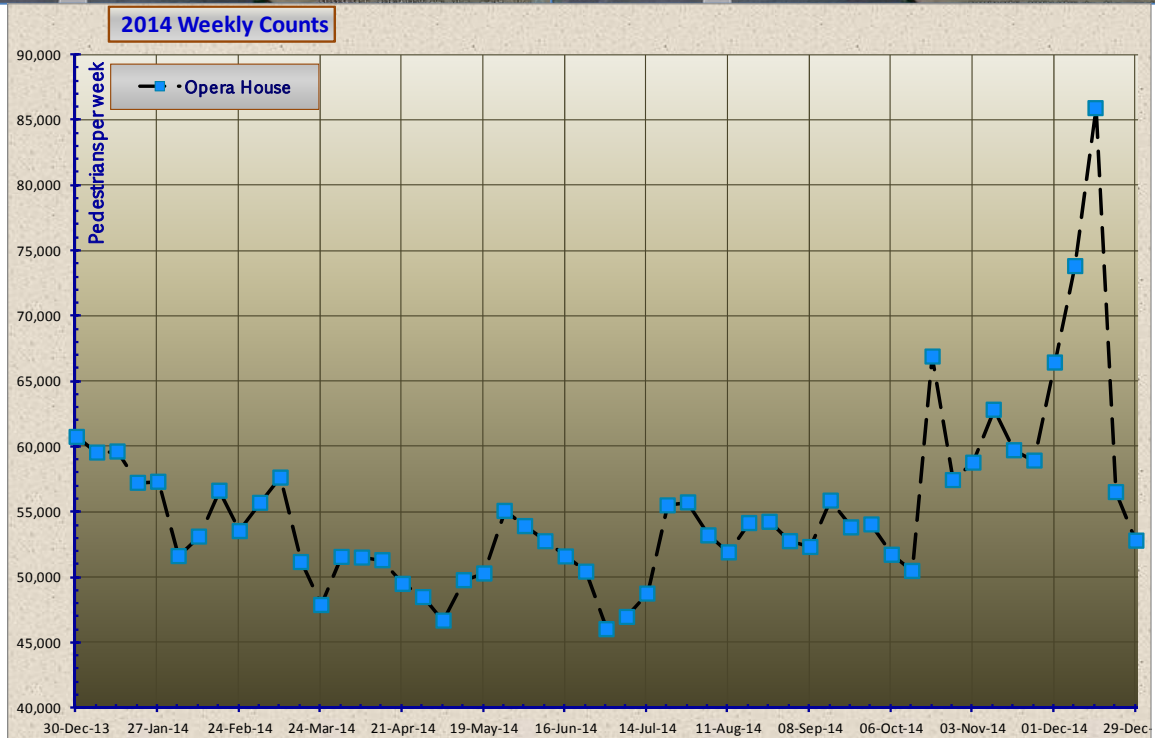
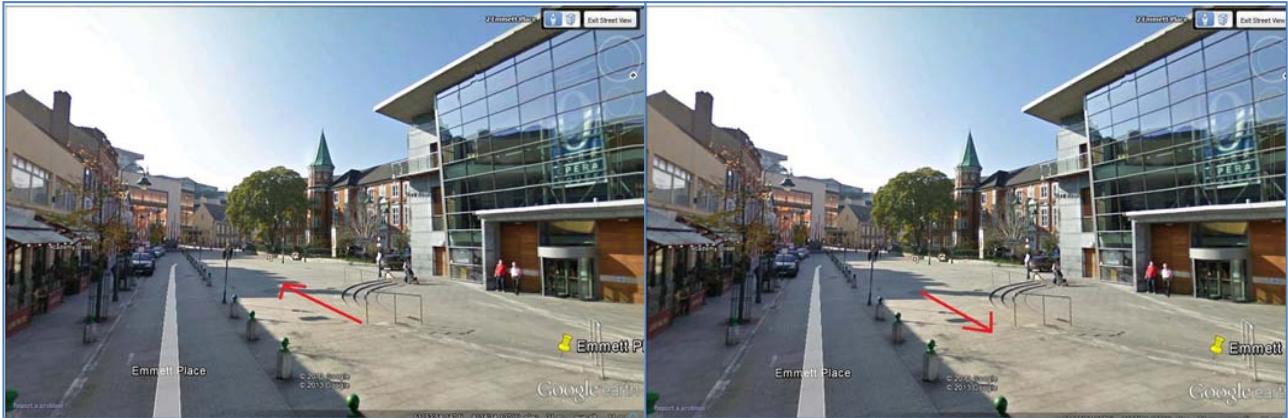
1. Map of all Counter locations:

Fig 1.1 Overview of all camera locations



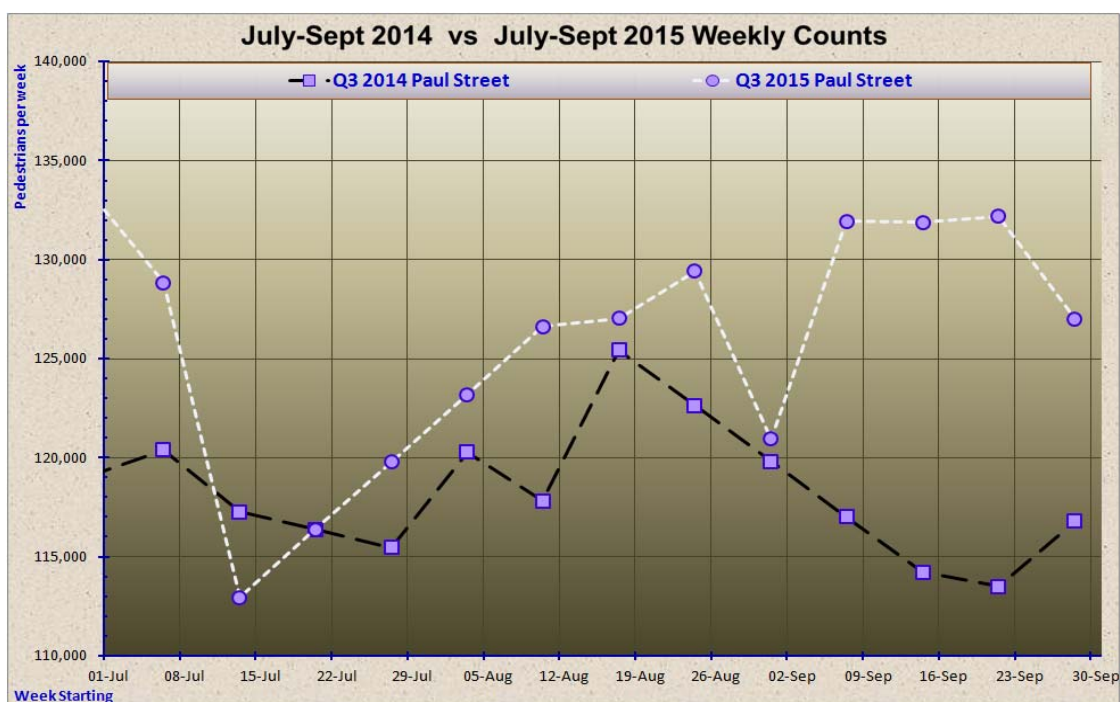
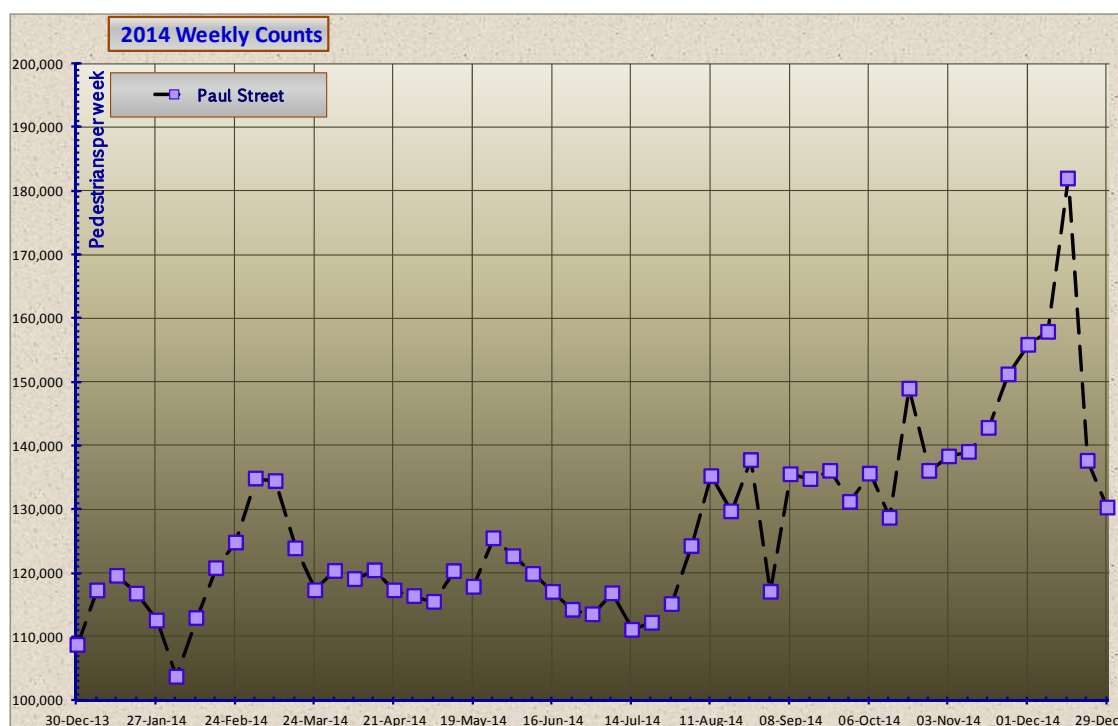
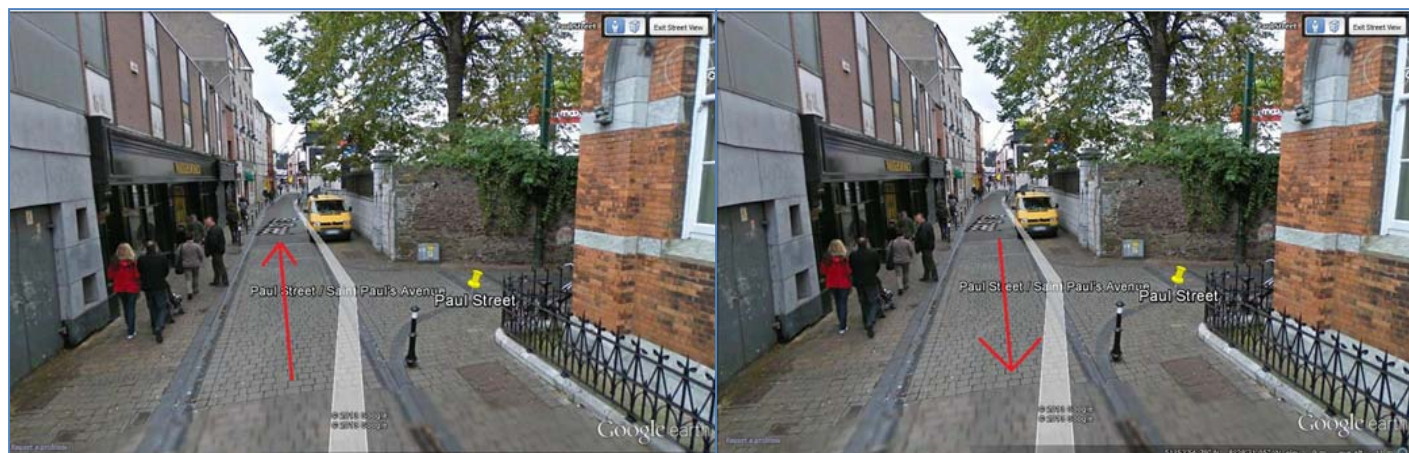
Emmet Place/Opera House Pedestrian Counts *Weekly Variations*

Opera House Pedestrian and Vehicle Count Sites

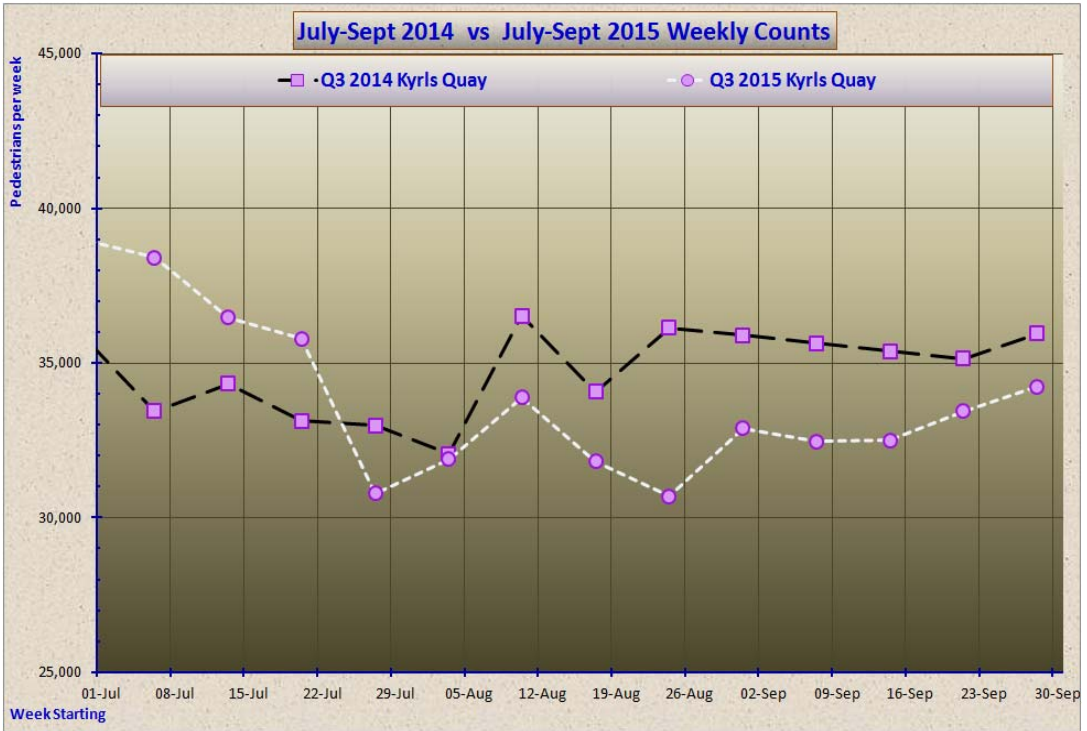
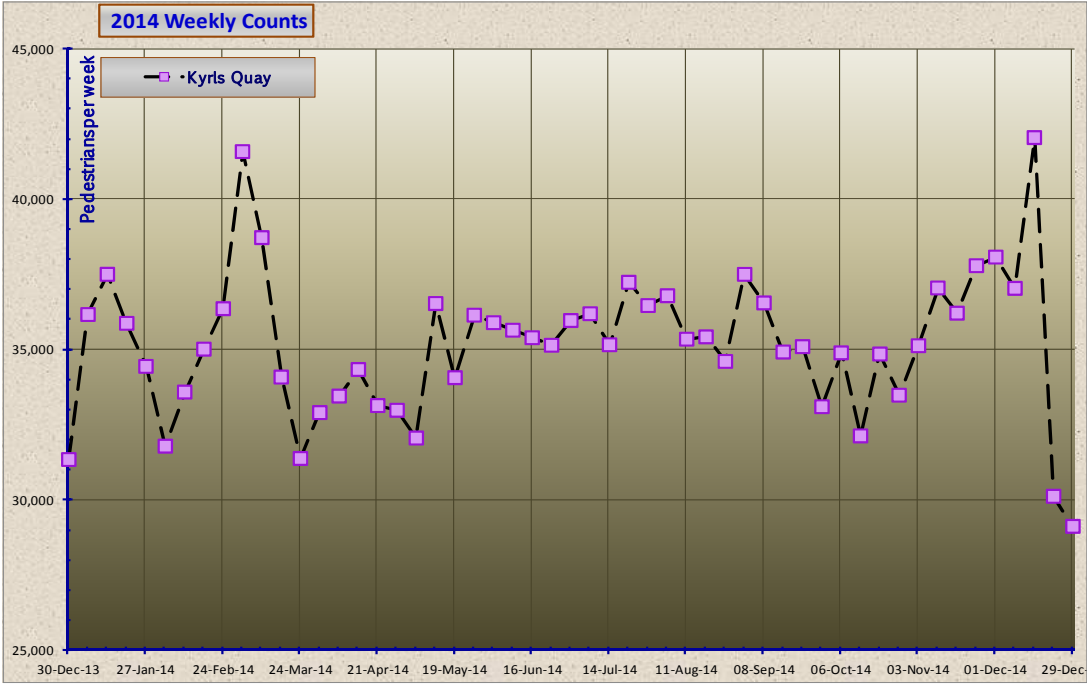
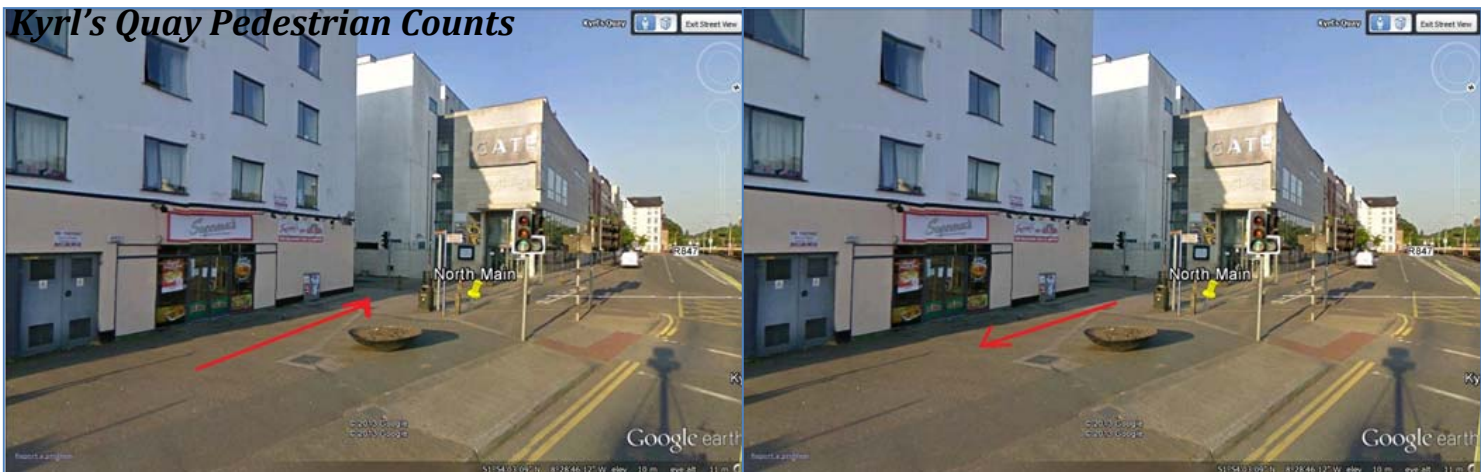


Paul Street Pedestrian Counts Weekly Variations

Paul Street Pedestrian Count Site



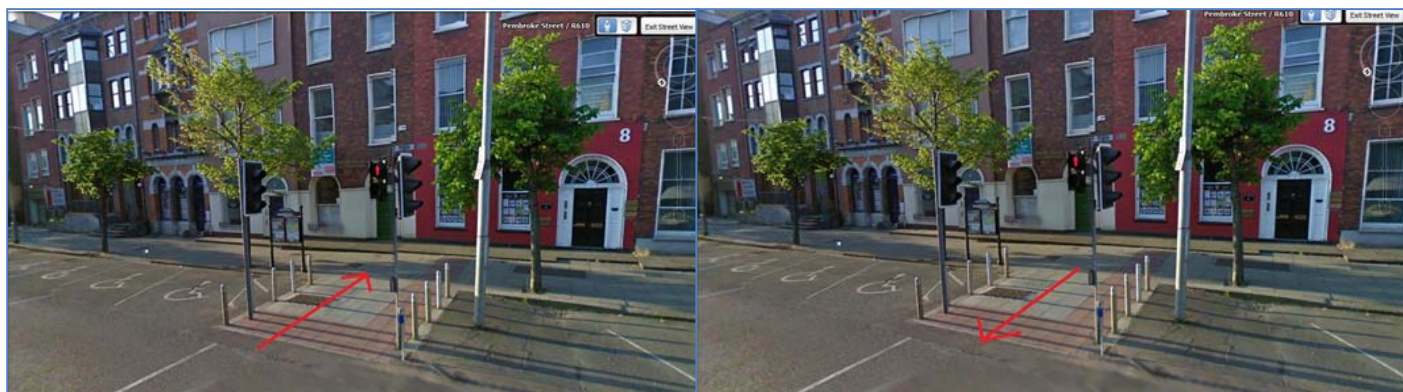
Kyrl's Quay Pedestrian Counts *Weekly Variations*



South Mall

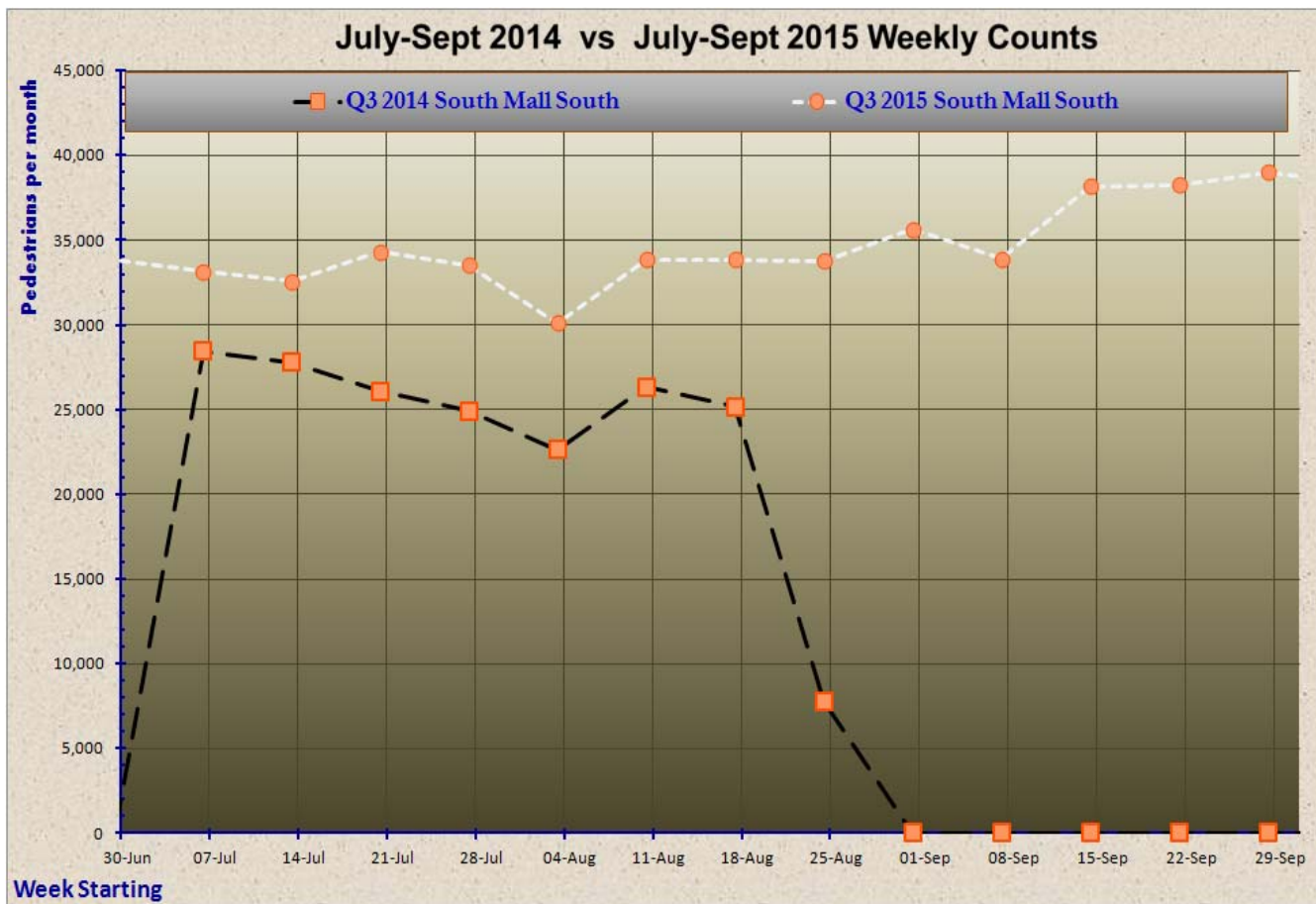
Pedestrian Counts *Weekly Variations*

South Mall South Pedestrian Count Sites



South Mall North Pedestrian Count Sites



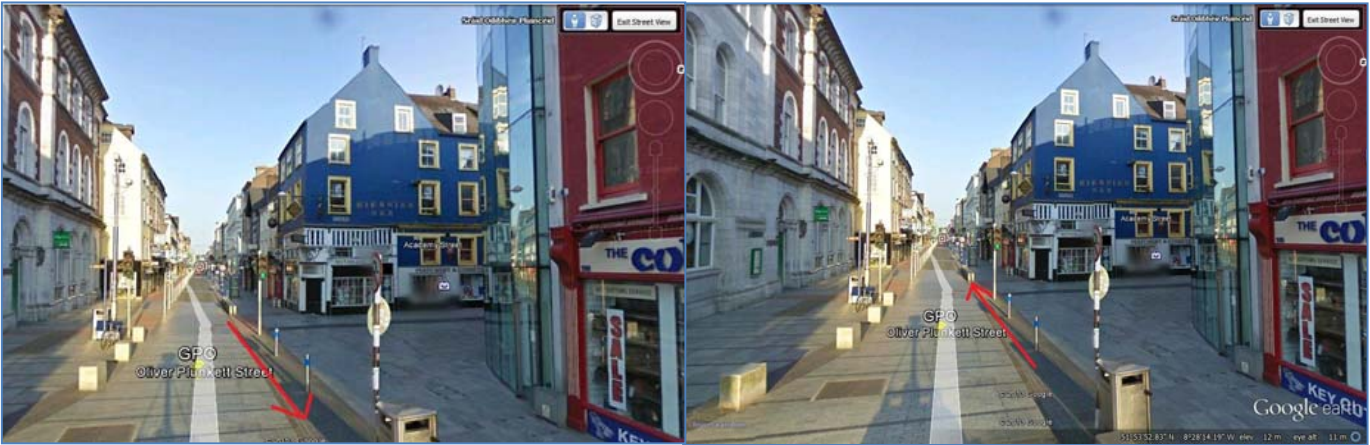


The Camera on South Mall South was out of action from Jun 2014 to January 2015. The fibre optic cables connected to this camera are in a location particularly vulnerable to intermittent damage. The problem was resolved in February 2015.

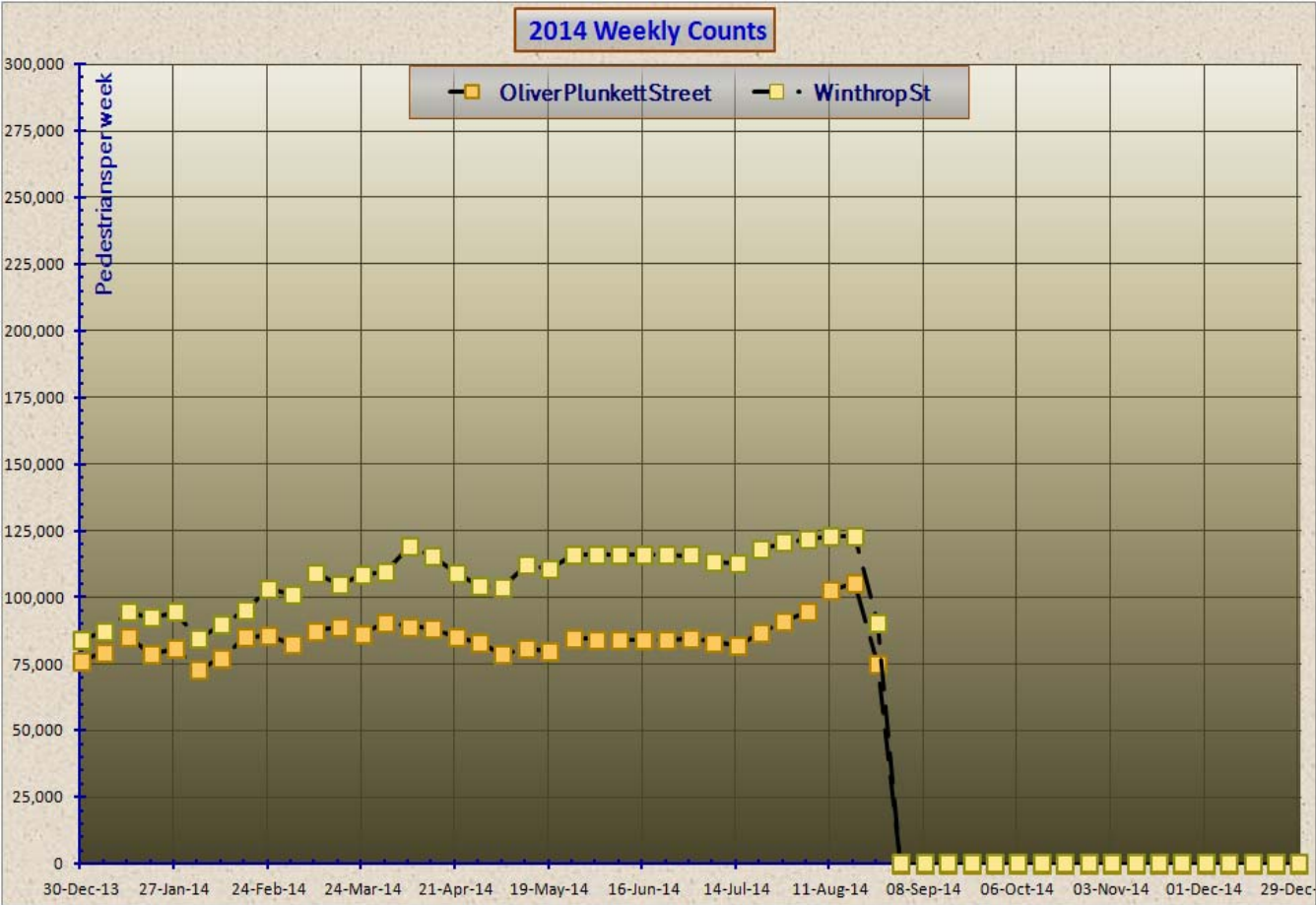
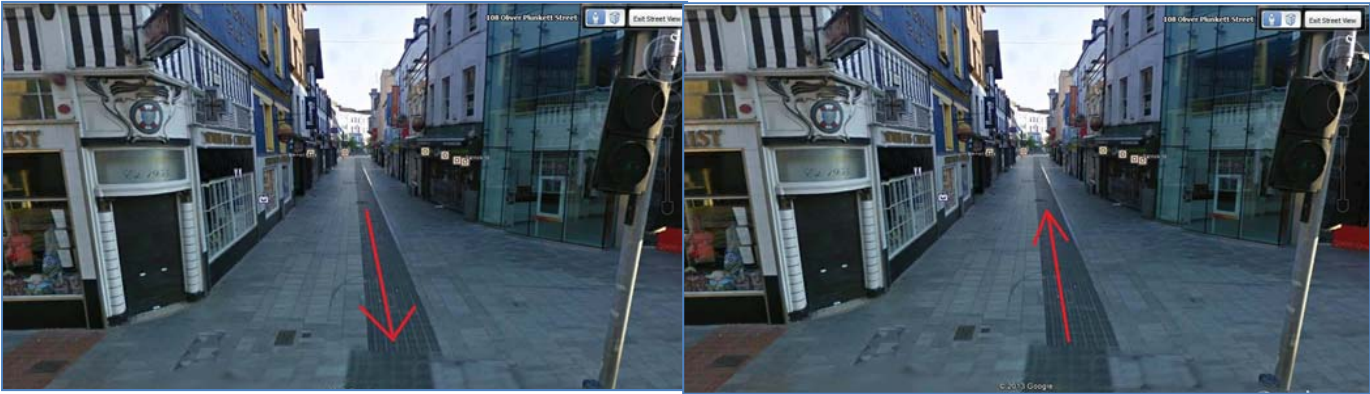
Data not available for Southmall Northside in Q3 2015.

Oliver Plunkett Street and Winthrop Street Pedestrian Counts *Weekly Variations*

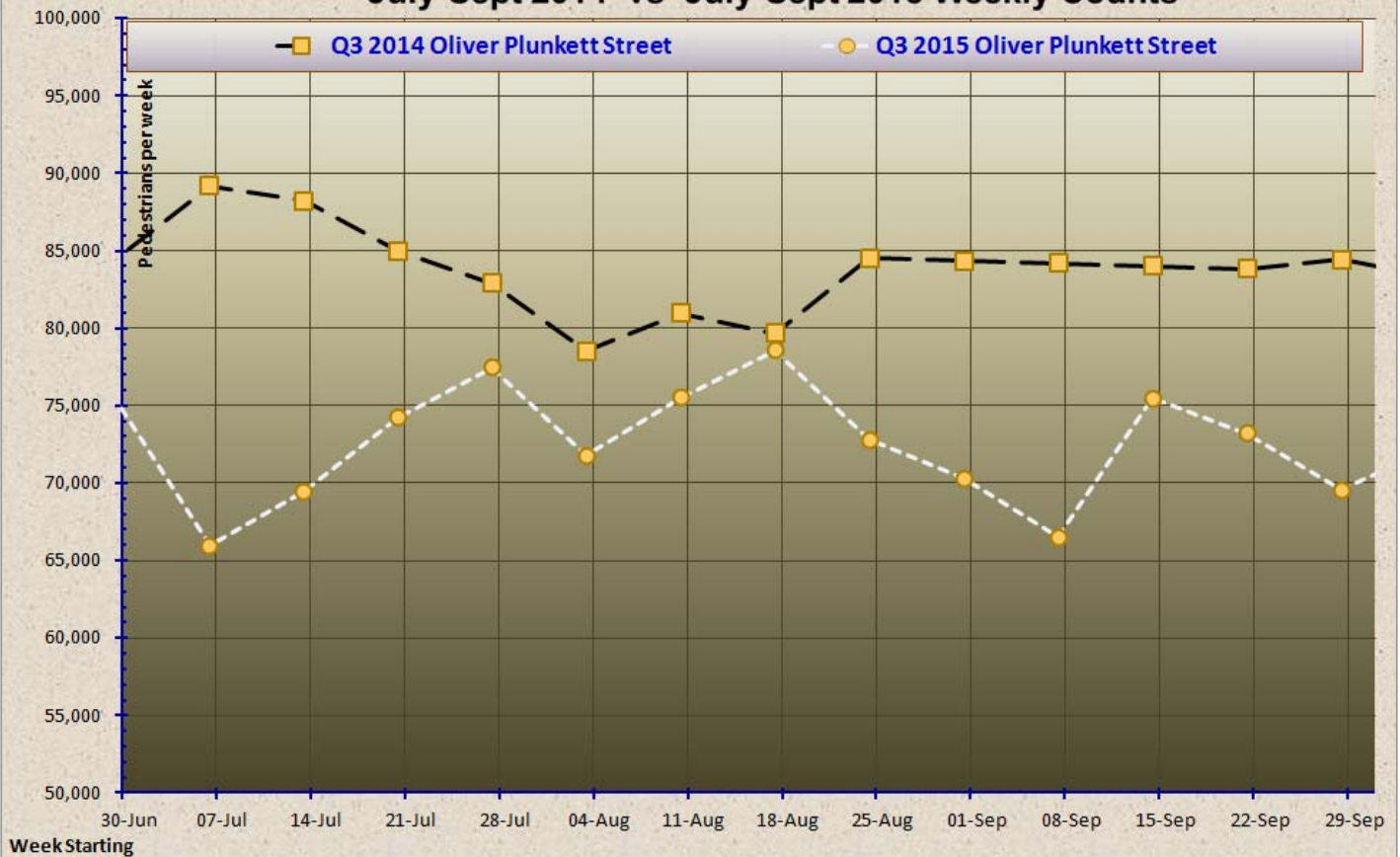
Oliver Plunkett Pedestrian Count Street Sites



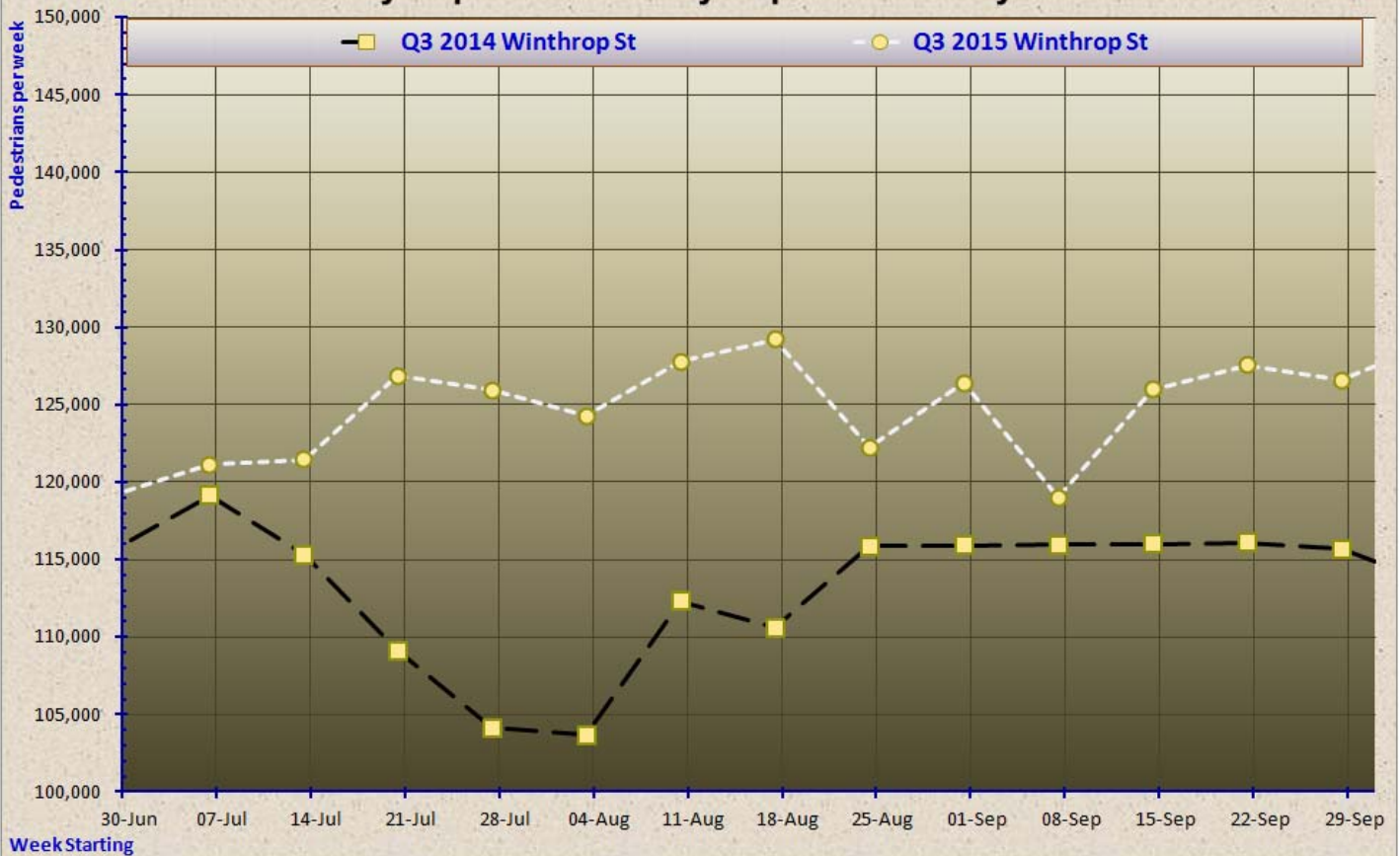
Winthrop Street Pedestrian Count Sites



July-Sept 2014 vs July-Sept 2015 Weekly Counts



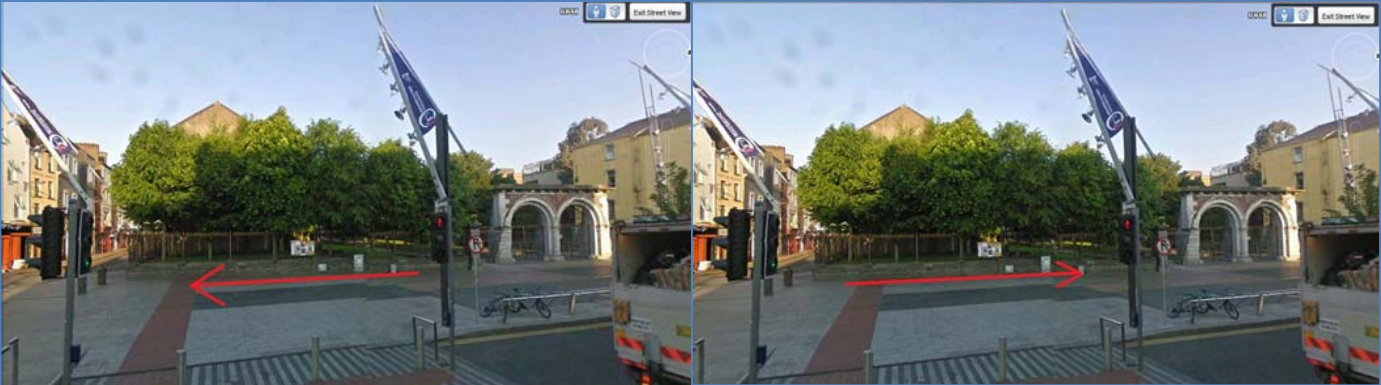
July-Sept 2014 vs July-Sept 2015 Weekly Counts



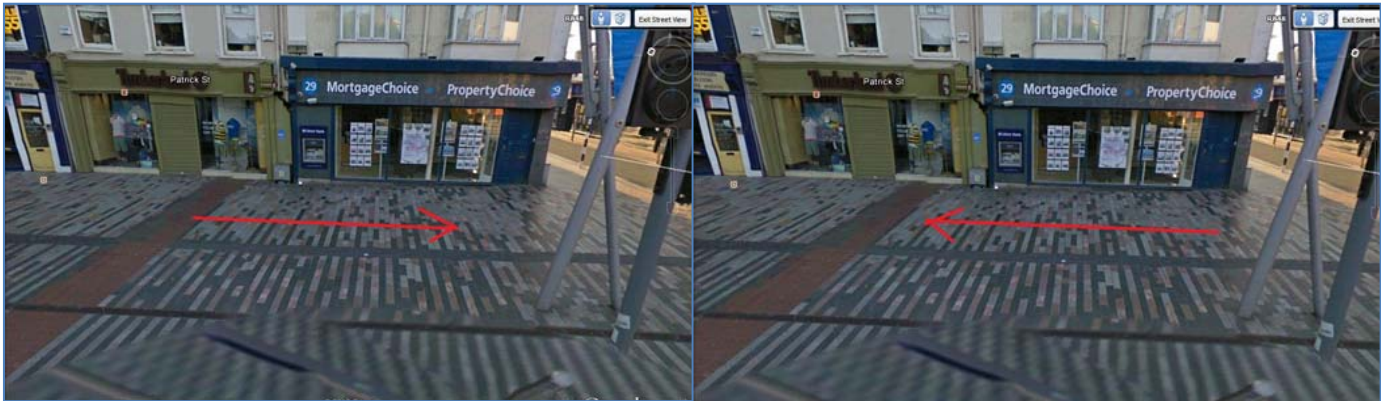
The apparent increase in footfall on Winthrop Street appears to complement the fluctuations in decline on Oliver Plunkett Street and may be explained by slight change in Camera angle. (Counts on both streets are captured from the same location.)

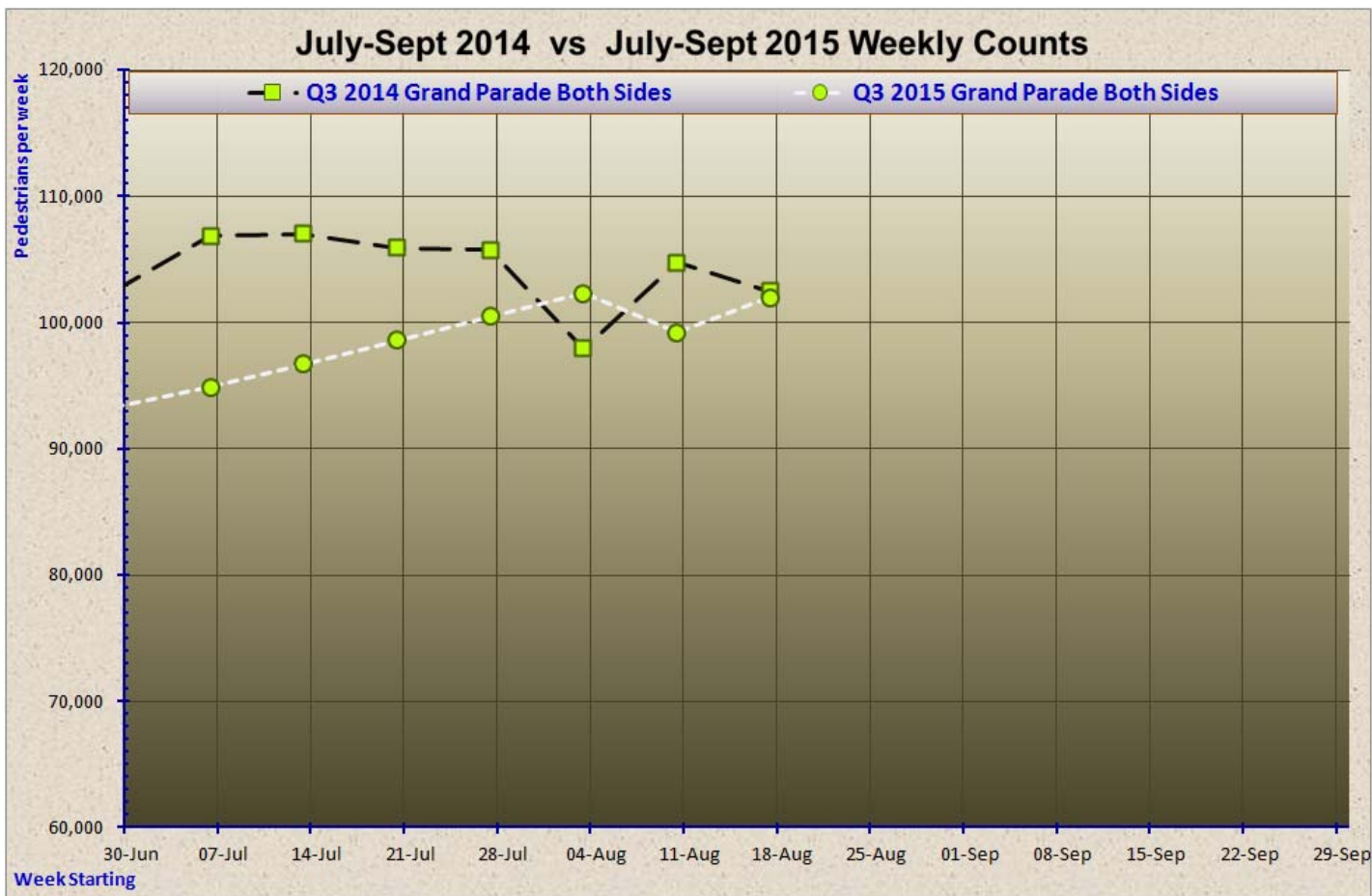
Grand Parade Pedestrian Counts Weekly Variations

Grand Parade West Pedestrian Count Sites



Grand Parade East Pedestrian Count Sites





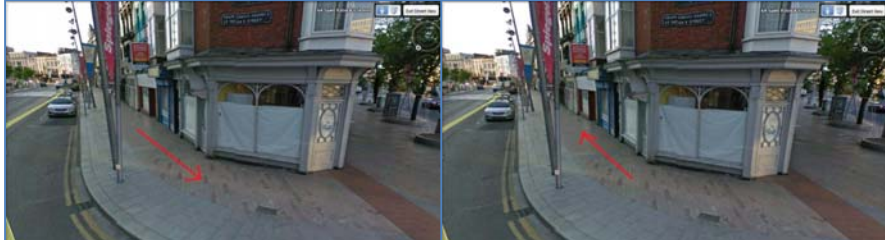
Data only available up to August 2015. Problem occurred at that point

St. Patrick's Street Pedestrian Counts *Weekly Variations*

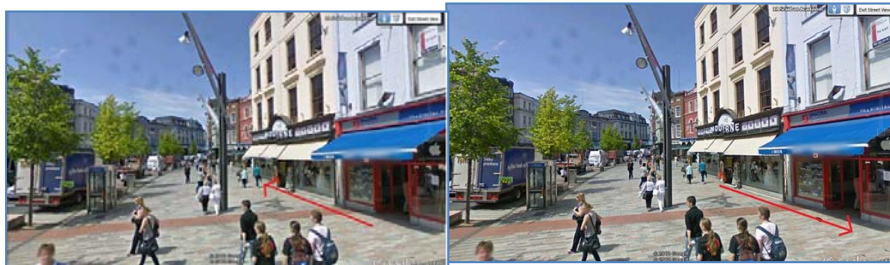
Daunt's Square North Pedestrian Count Site



Daunt's Square South Pedestrian Count Site



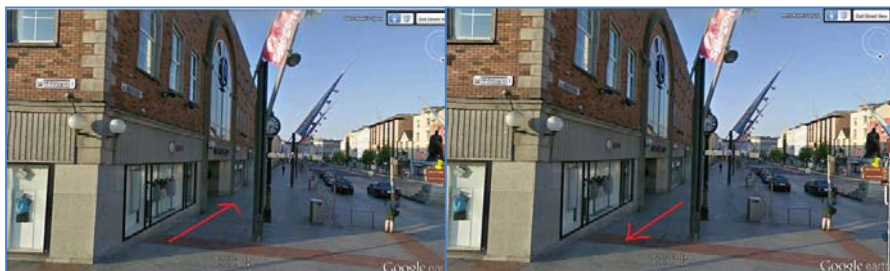
St. Patrick's Street @ Academy Street North Pedestrian Count Site



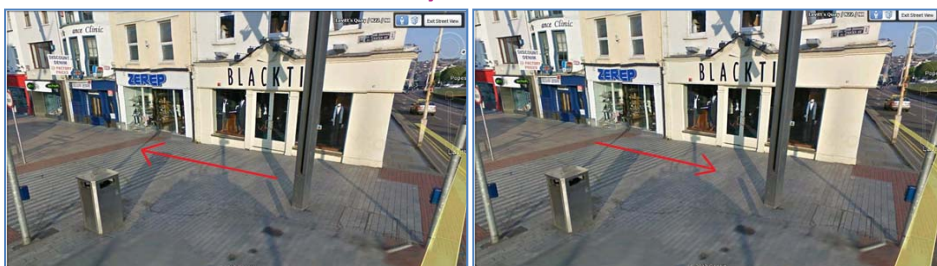
St. Patrick's Street @ Academy Street South Pedestrian Count Site

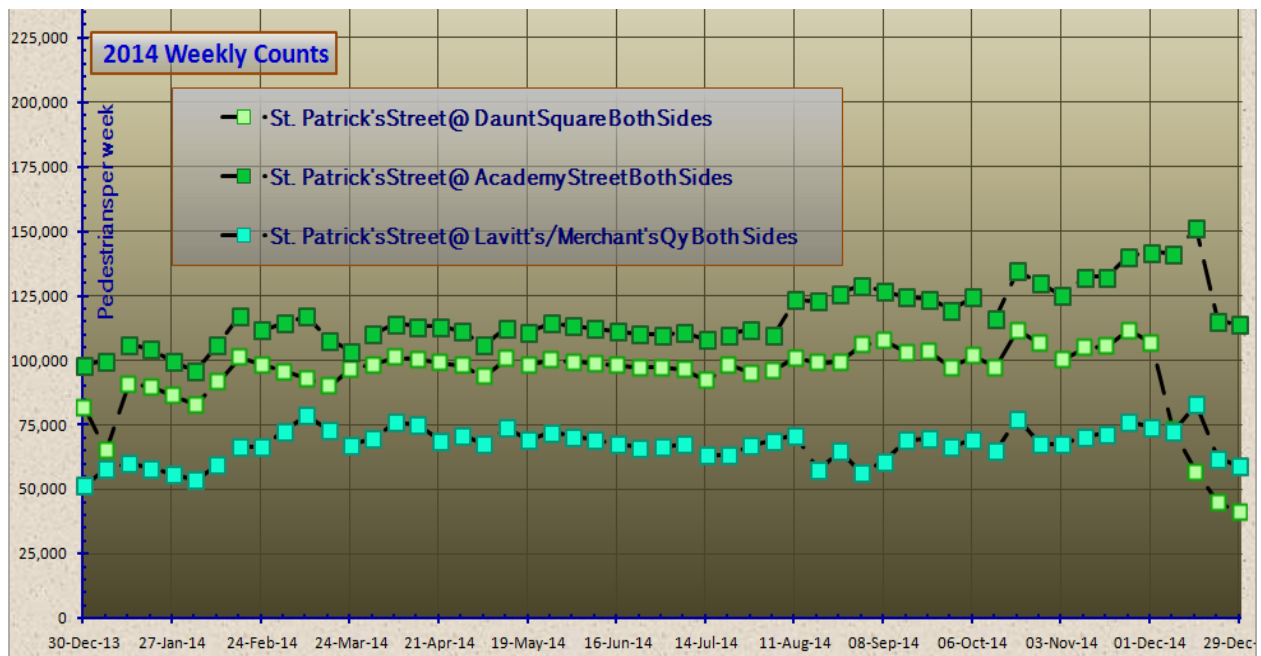


Merchant's Quay Pedestrian Count Site



St. Patrick's Street @ Lavitt's Quay Pedestrian Count Site





Data not currently available for St. Patrick's Street in Q3 2015.

2014 vs. 2015 Junction Counts *Weekly Variations*

Chart of Weekly Counts at all sites in 2014

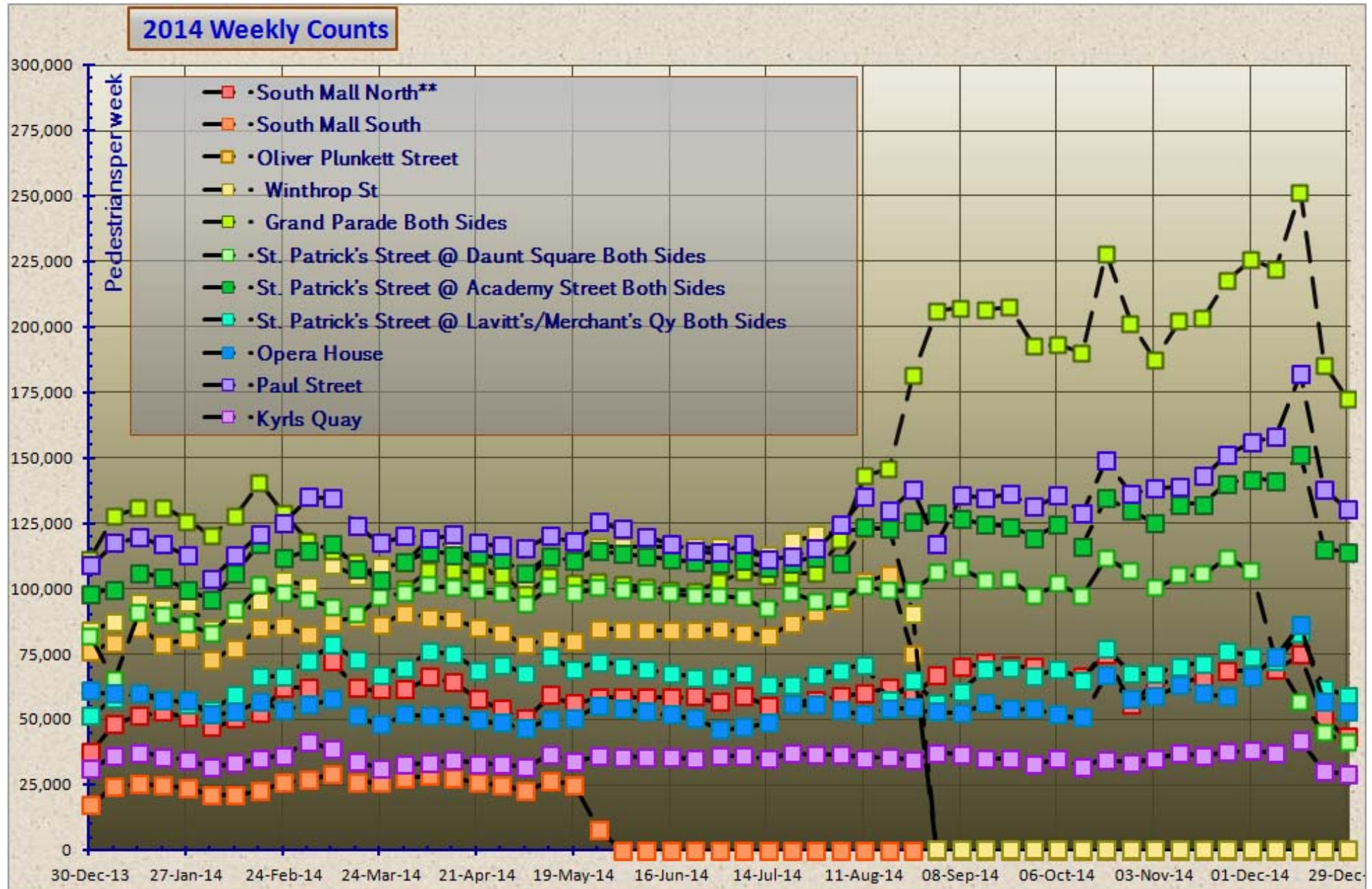


Chart of Weekly Counts at all sites in Q1-Q3 2015

