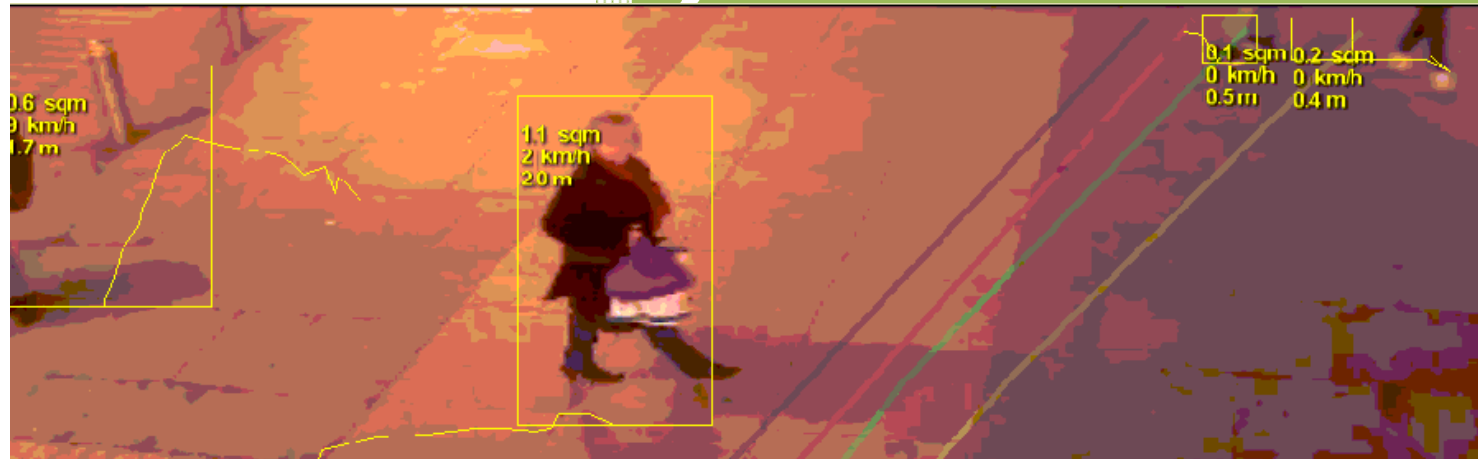


April 2015- June 2015



Cork City Pedestrian Counter Report#

Engine	Id	Rule	Zone Name	Object Class	Start Time	End Time	
0	3	Directional Violation	Zone 0	Person	2015-03-13 19:01:18	2015-03-13 19:01:18	
0	2	Directional Violation	Zone 1	Person	2015-03-13 19:01:15	2015-03-13 19:01:15	
0	1	Directional Violation	Zone 0	Person	2015-03-13 19:00:06	2015-03-13 19:00:06	
0	0	Directional Violation	Zone 0	Person	2015-03-13 18:59:53	2015-03-13 18:59:53	

Disclaimer

Cork City Council has produced this report based on information extracted from our Pedestrian Counter Monitoring System. Although care has been taken to ensure the accuracy and completeness of the information, Cork City Council accepts no liability for the accuracy of the content, or for the consequences of any uses or actions taken on the basis of the information provided.

Sarah Greene

Cork City Council

April 2015-June 2015

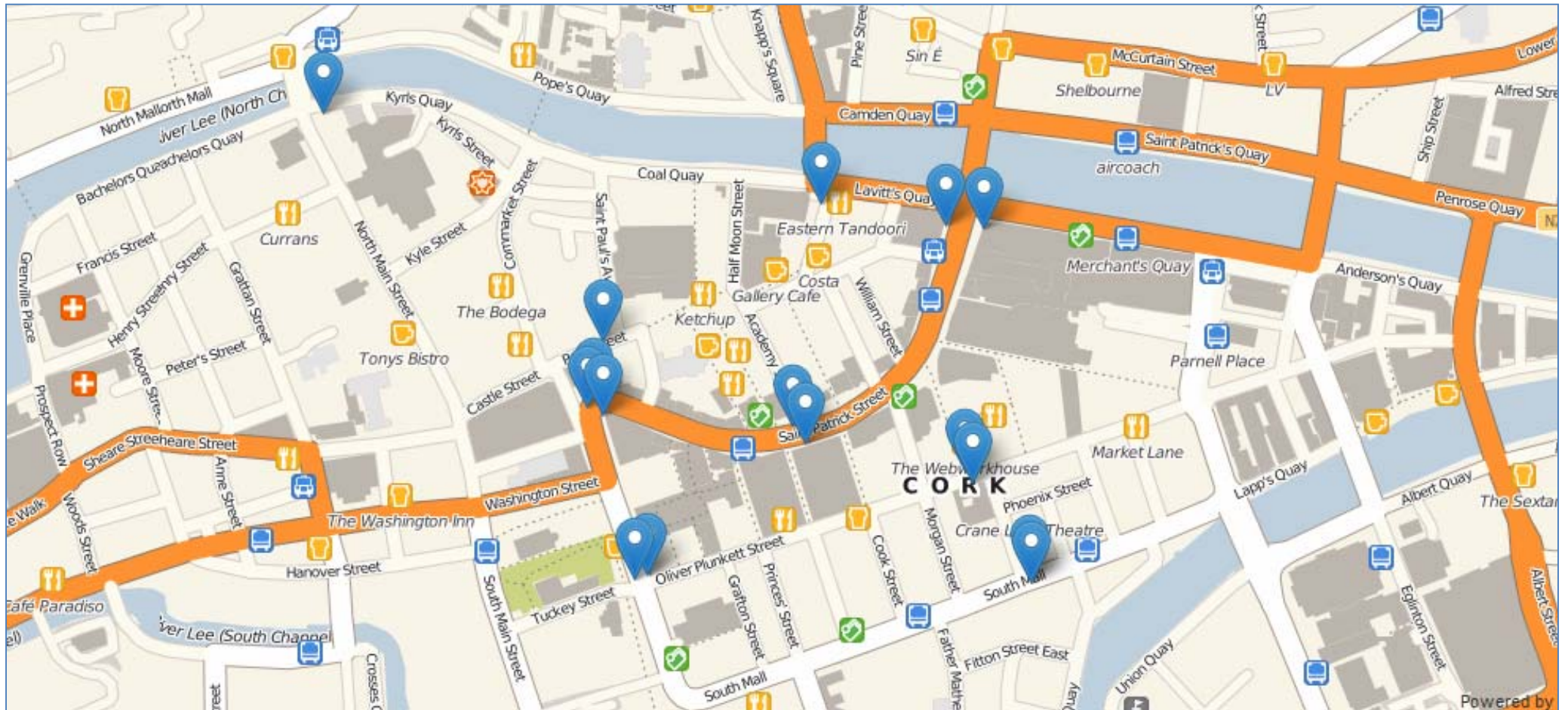
Outputs from the:

Cork City Council Pedestrian Counter Web

- ❖ This report illustrates trends in data extracted from Cork City Council Pedestrian Counter System, which comprises 16 city centre cameras, recording pedestrian movements 24 hours a day, 7 days a week.
- ❖ The report contains the following information:
 - ◆ Photos showing camera location & view being reported
 - ◆ Graphs of the weekly variations in the total number of pedestrians per street surveyed in 2014
 - ◆ Graphs comparing weekly total pedestrians in April – June 2014 compared to April – June 2015 for each street.
 - ◆ A graph to show the weekly totals for all sites in 2014
 - ◆ A graph to show the weekly totals for all sites Jan – June 2015 to allow comparisons of different areas.
- ❖ Data interruptions occur periodically due to interruptions in power supply or camera interference / blockages from signs flags etc. For interruptions over short periods, missing data is estimated from the recorded data. Data interruptions for longer periods are noted on the relevant graphs.

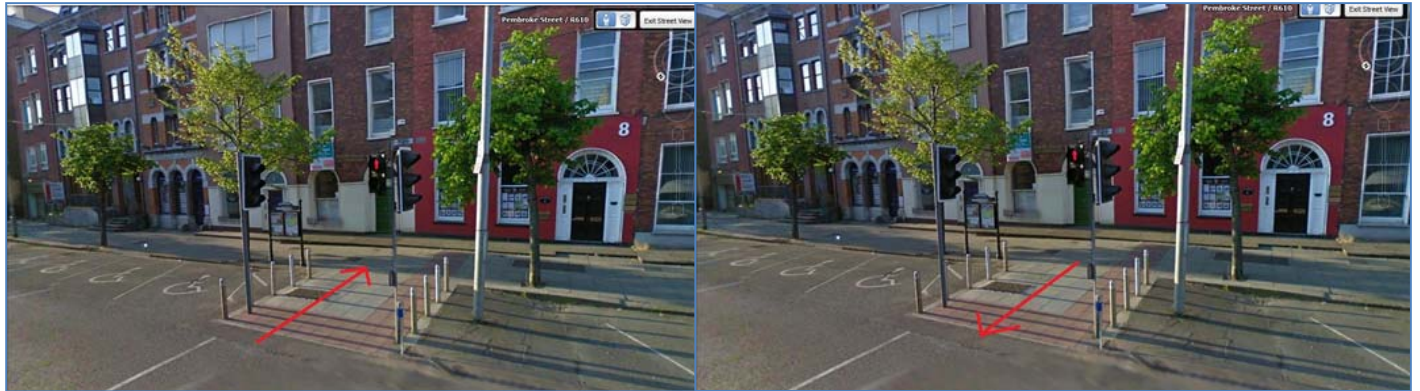
1. Map of all Counter locations:

Fig 1.1 Overview of all camera locations

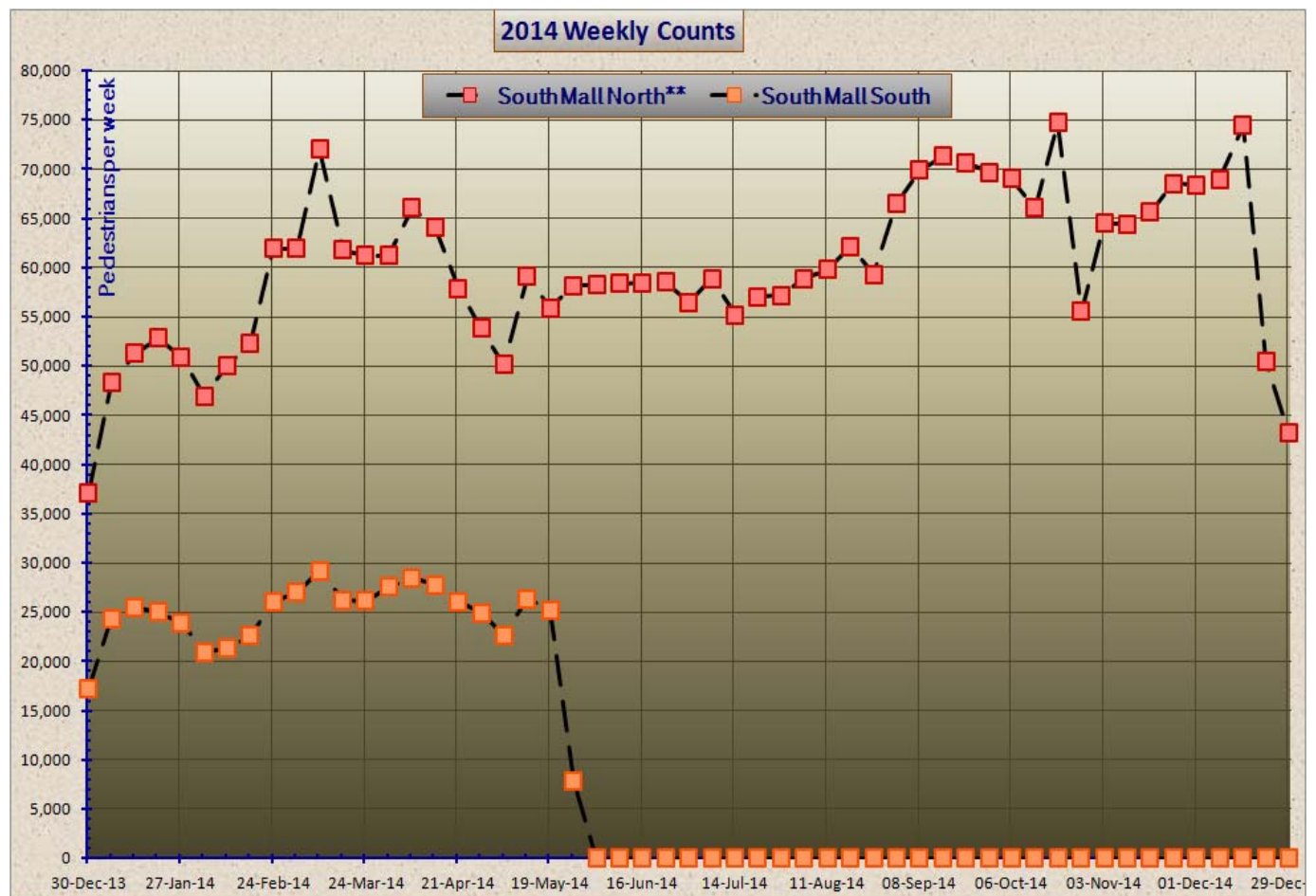


South Mall Pedestrian Counts *Weekly Variations*

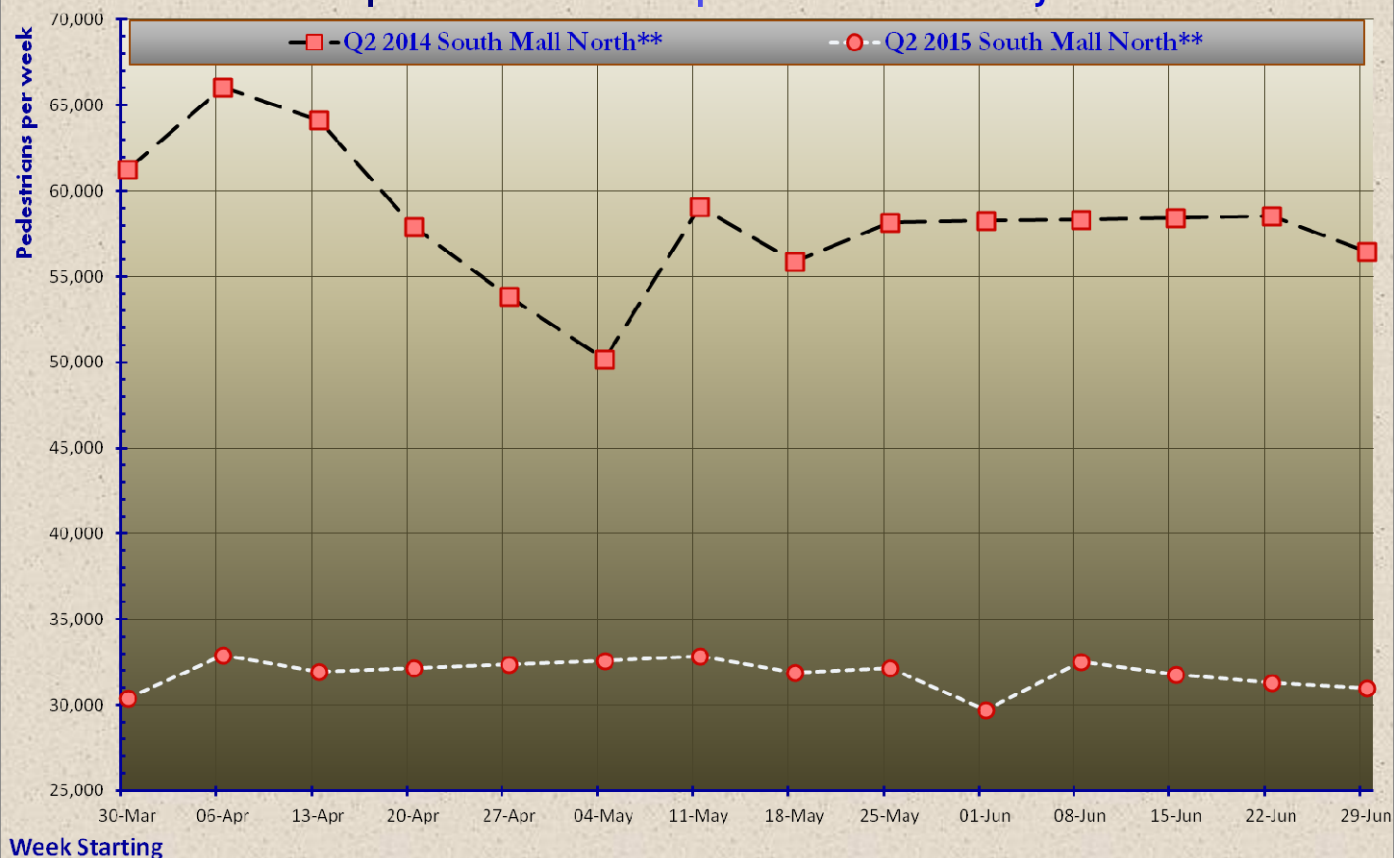
South Mall South Pedestrian Count Sites



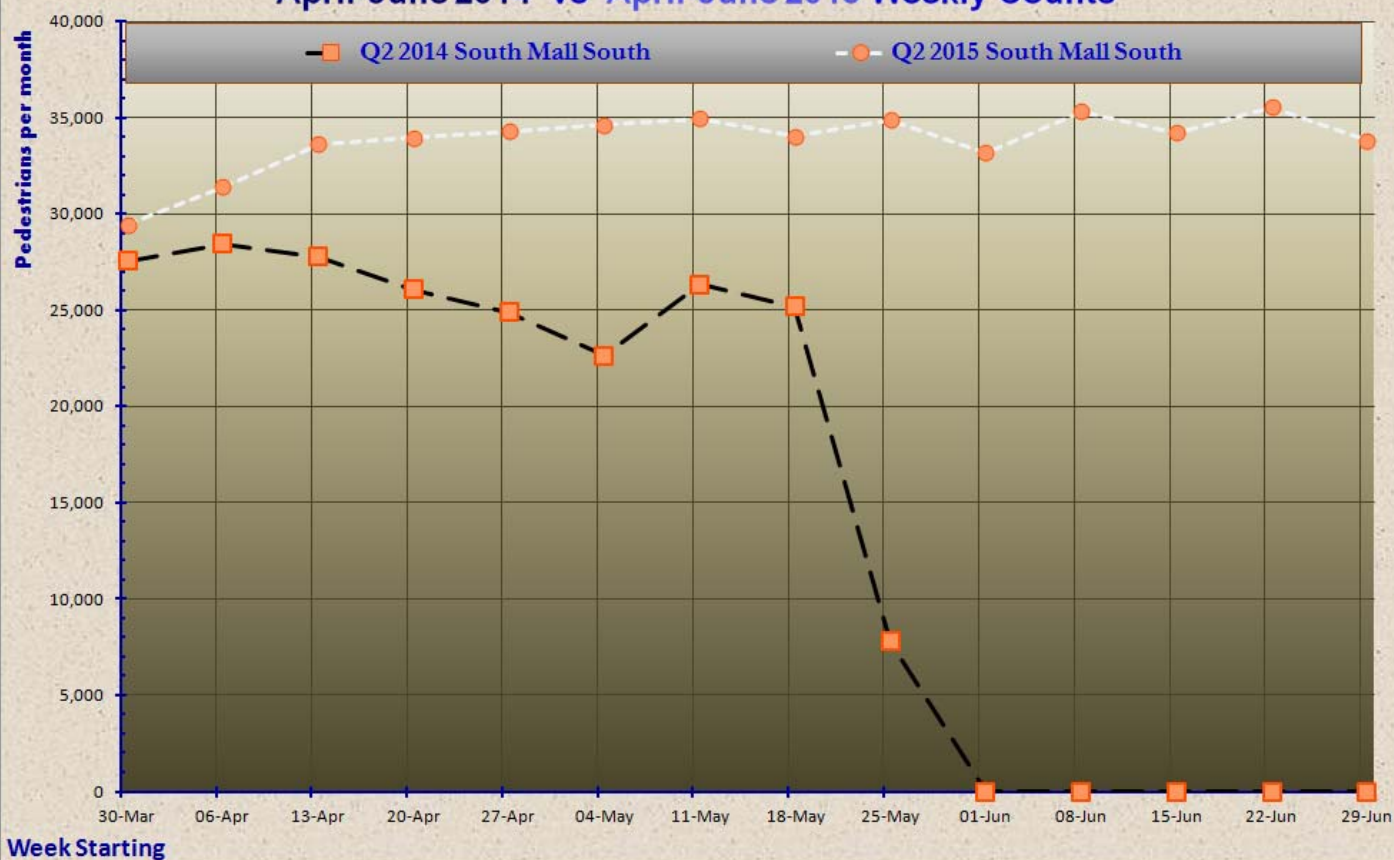
South Mall North Pedestrian Count Sites



April-June 2014 vs April-June 2015 Weekly Counts



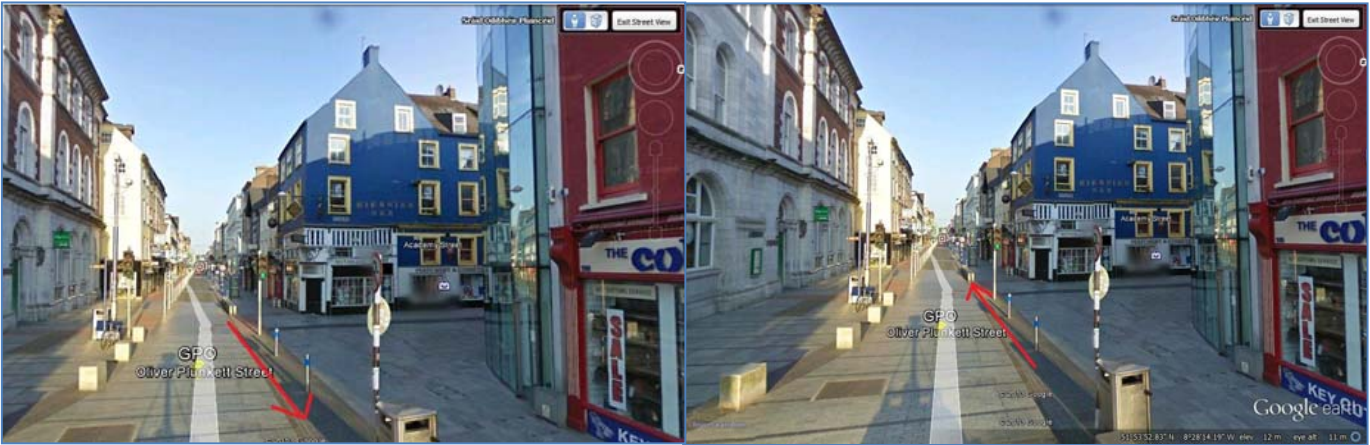
April-June 2014 vs April-June 2015 Weekly Counts



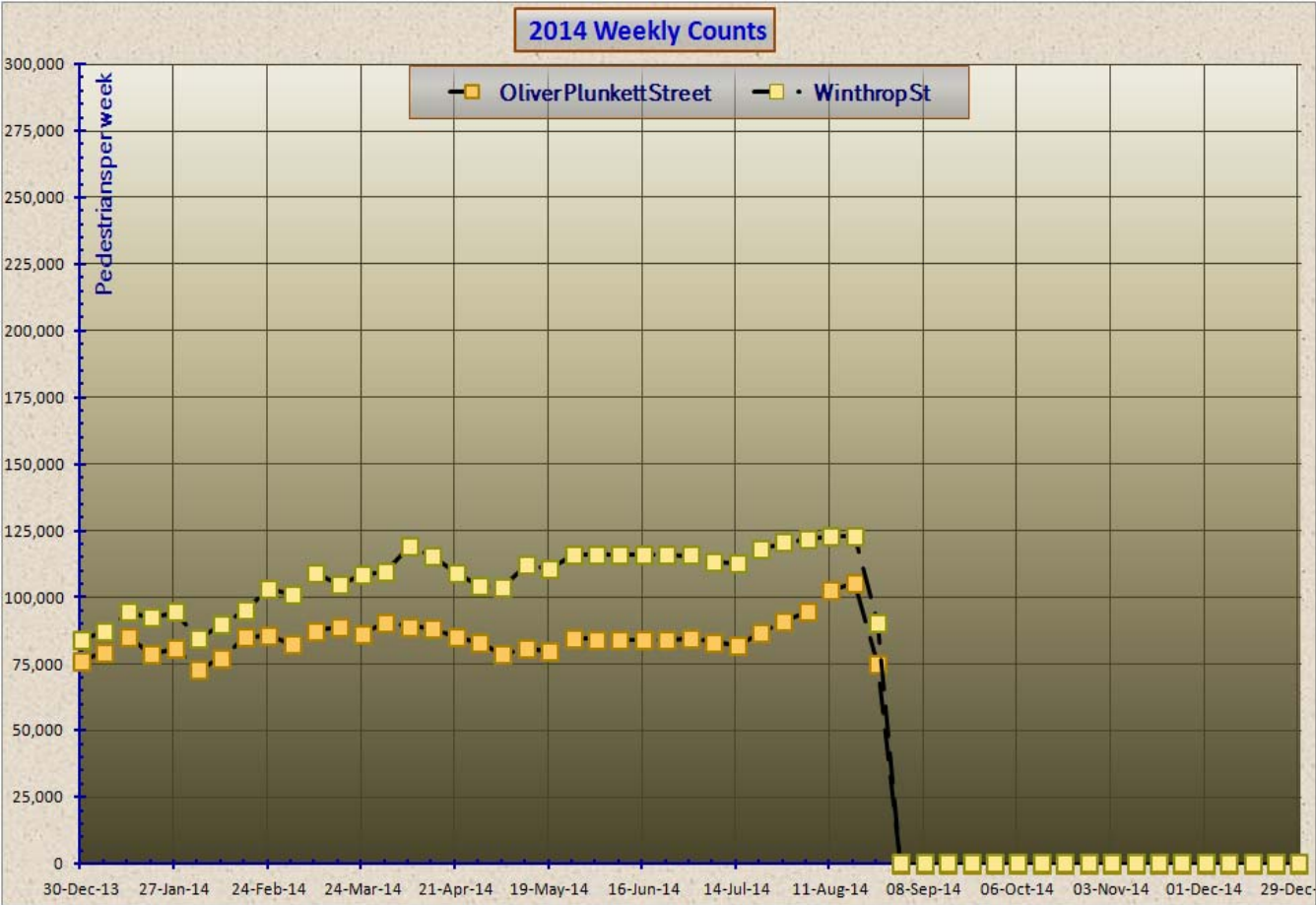
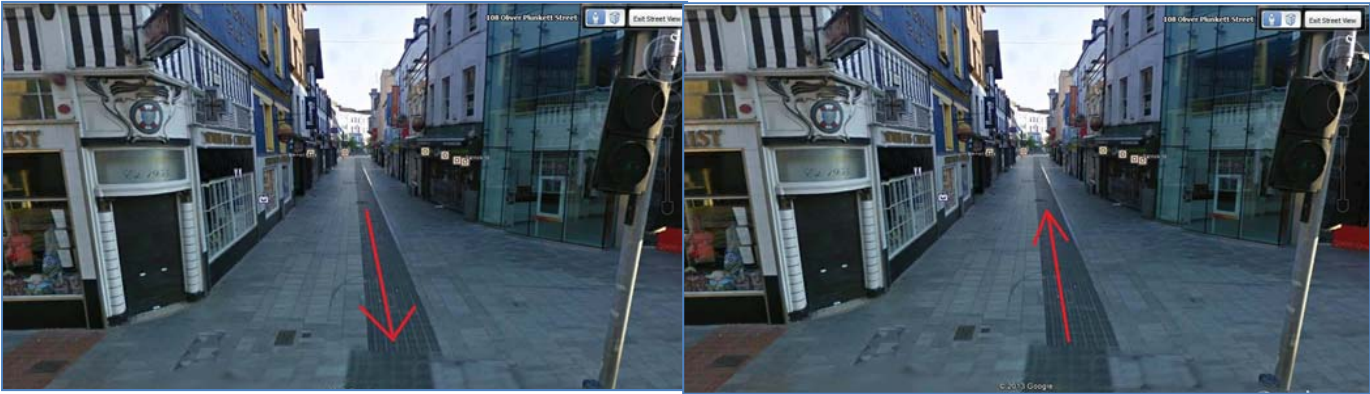
The Camera on South Mall South was out of action from Jun 2014 to January 2015. The fibre optic cables connected to this camera are in a location particularly vulnerable to intermittent damage. The problem was resolved in February 2015.

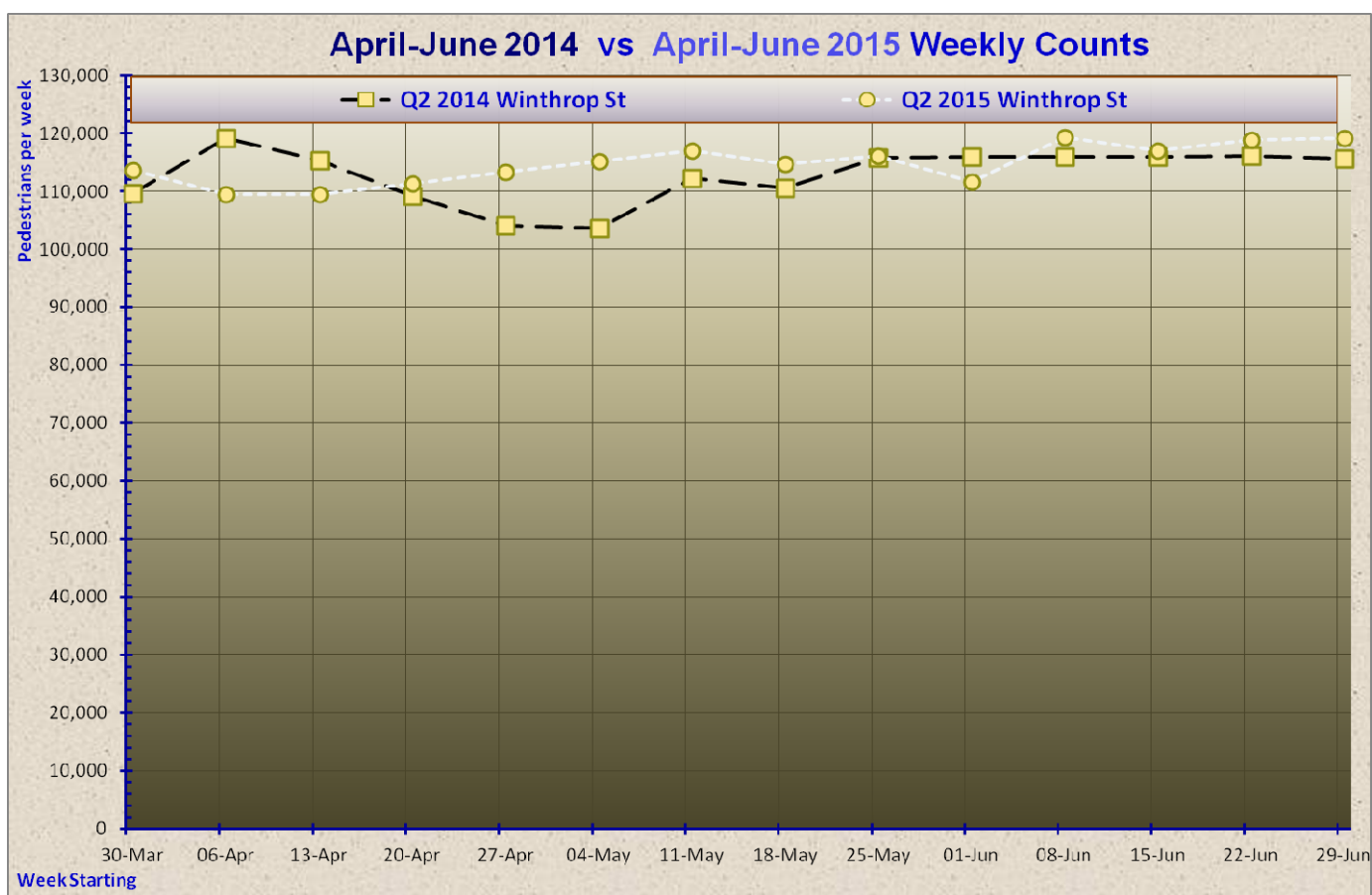
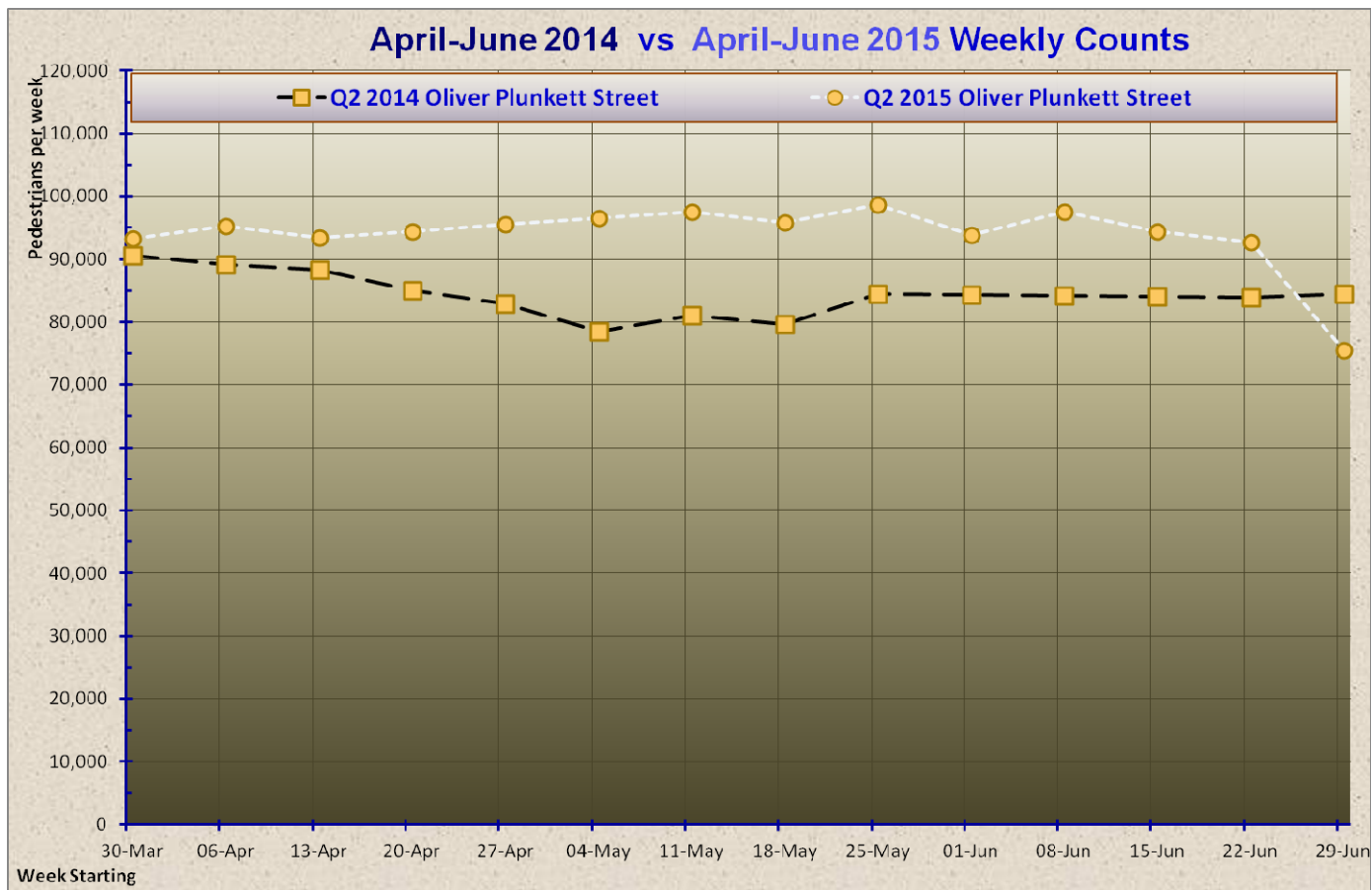
Oliver Plunkett Street and Winthrop Street Pedestrian Counts *Weekly Variations*

Oliver Plunkett Pedestrian Count Street Sites



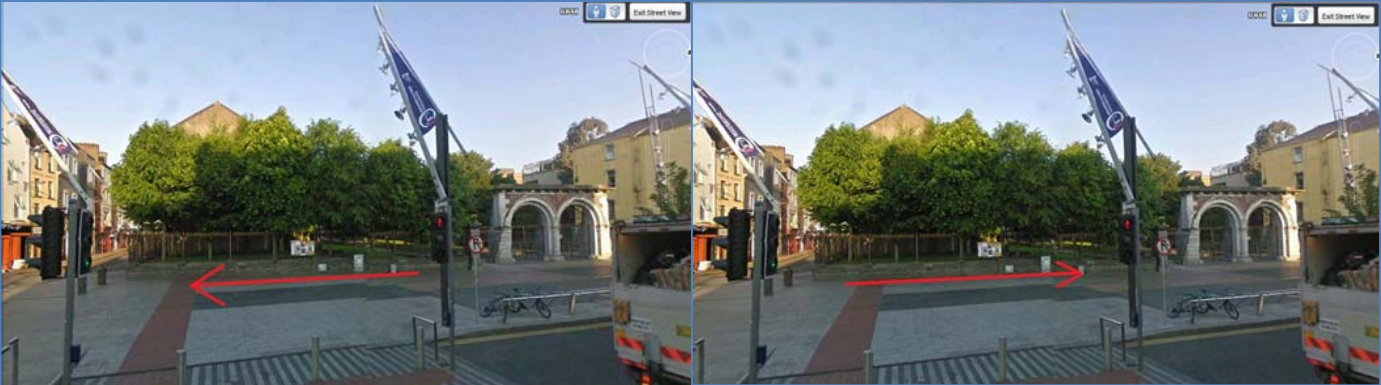
Winthrop Street Pedestrian Count Sites



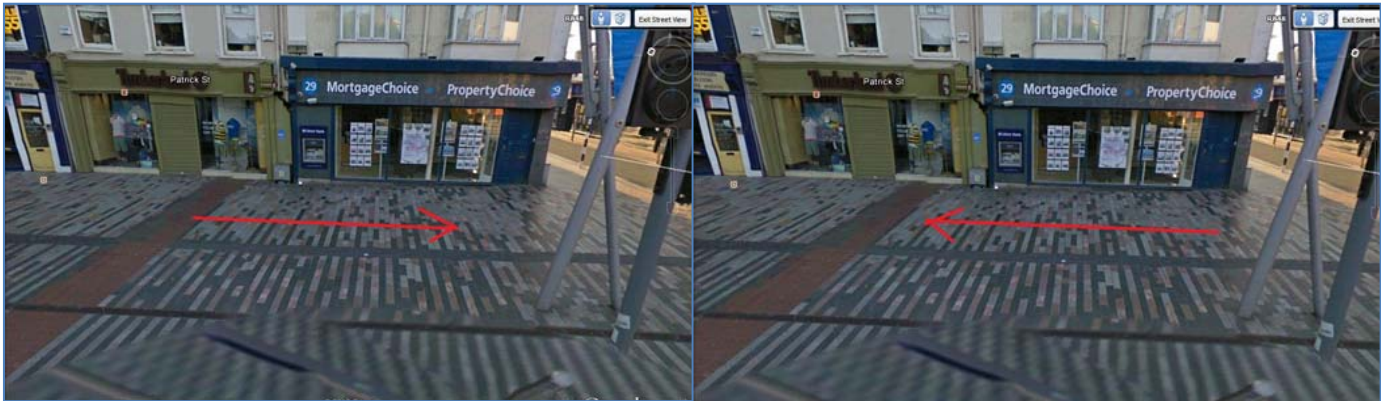


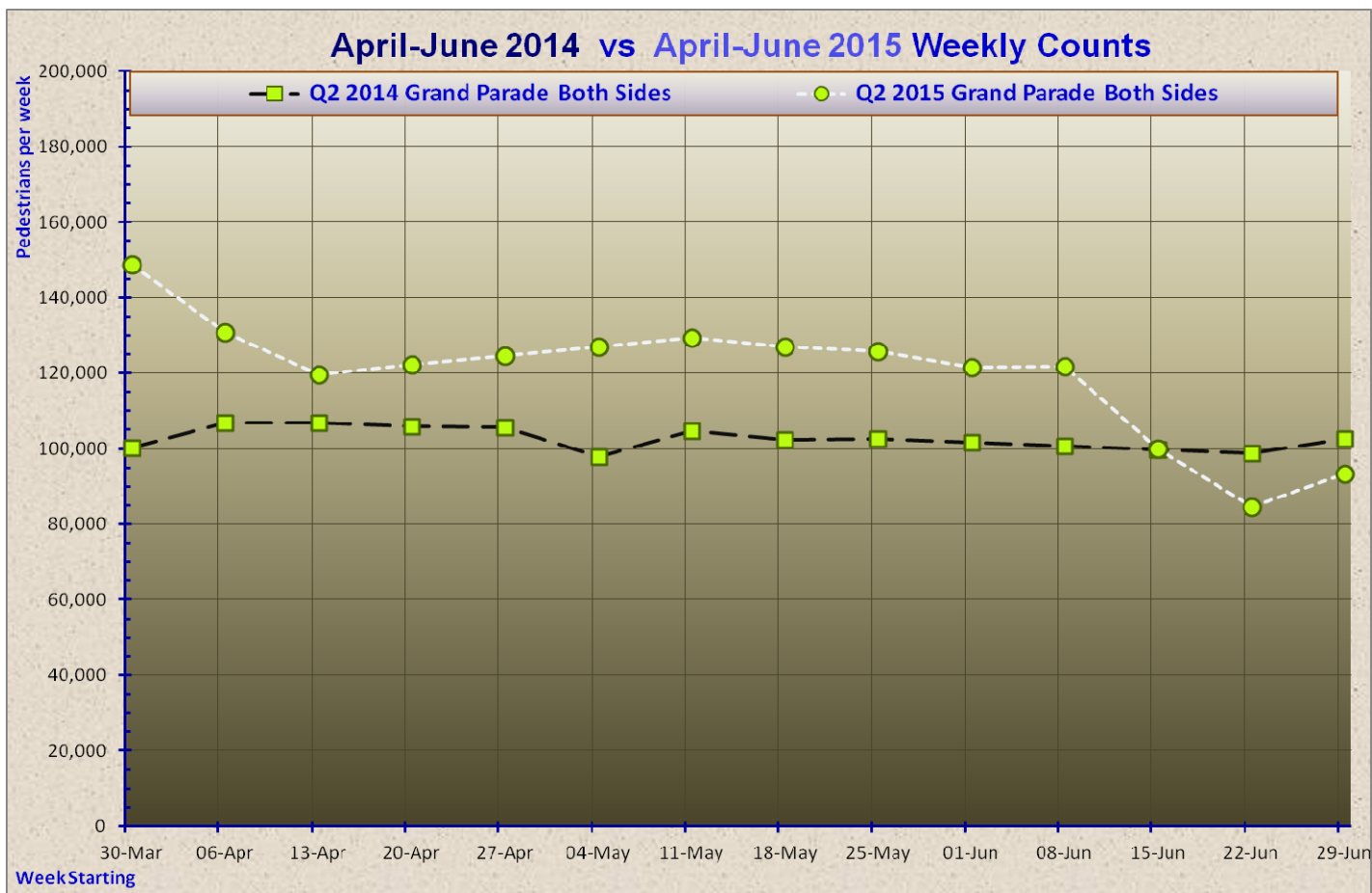
Grand Parade Pedestrian Counts Weekly Variations

Grand Parade West Pedestrian Count Sites



Grand Parade East Pedestrian Count Sites





In Mid 2013 the scope of the camera on Grand Parade West (by Bishop Lucey Park) was reduced in an attempt to improve data collection efficiency, when certain parts of the image captured were blacked out. Unfortunately subsequent investigations revealed that this may have unintentionally cut out some areas where pedestrians walk past the park close to the railings. As a result the count numbers at this site would have been reduced.

Another fall in numbers here occurred in March 2014 when the filming of the St Patrick's Day Parade caused the Pedestrian Count cameras to be tilted downwards. As a result, for several months the cameras counted only pedestrians crossing a very small patch of pavement near the pedestrian crossing.

Because there were no prolonged zero readings the problem was not detected until mid 2014. At this time the first six months of 2013 counts were compared to the first six months of 2014 counts. From this exercise, the cumulative impact of the two changes to the cameras here became clear. The problem was therefore rectified in late August 2014.

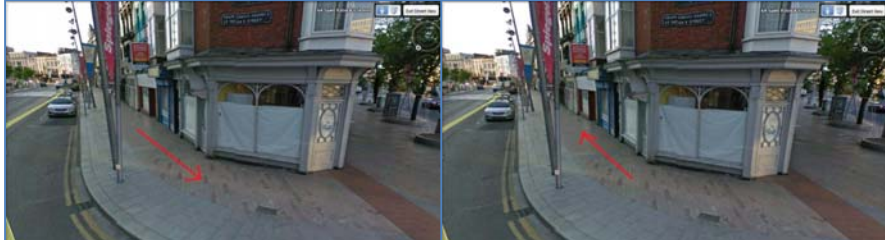
This explains the sudden rise in footfall counts in August 2014. It should be noted that the graphs above include counts from the Grand Parade East site which was never affected.

St. Patrick's Street Pedestrian Counts *Weekly Variations*

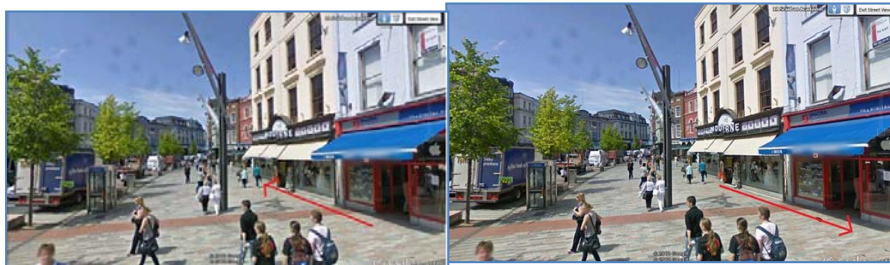
Daunt's Square North Pedestrian Count Site



Daunt's Square South Pedestrian Count Site



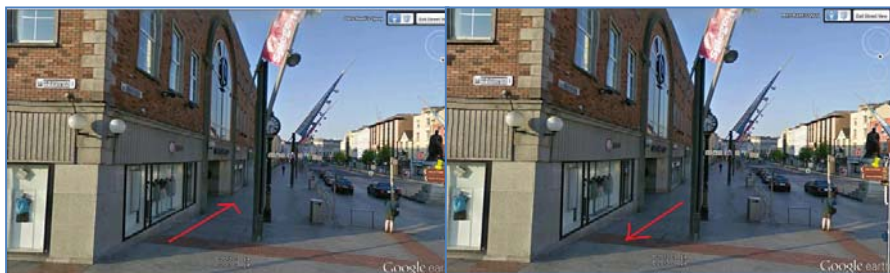
St. Patrick's Street @ Academy Street North Pedestrian Count Site



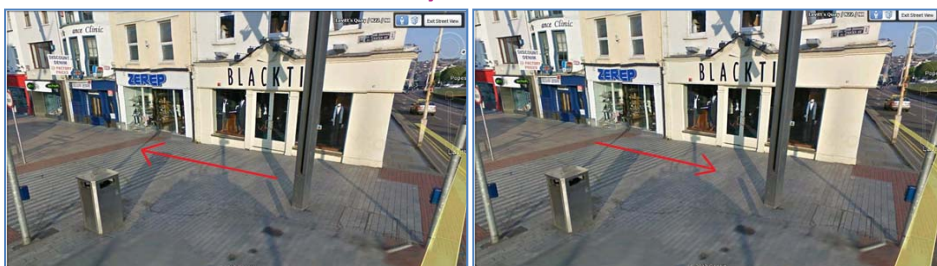
St. Patrick's Street @ Academy Street South Pedestrian Count Site

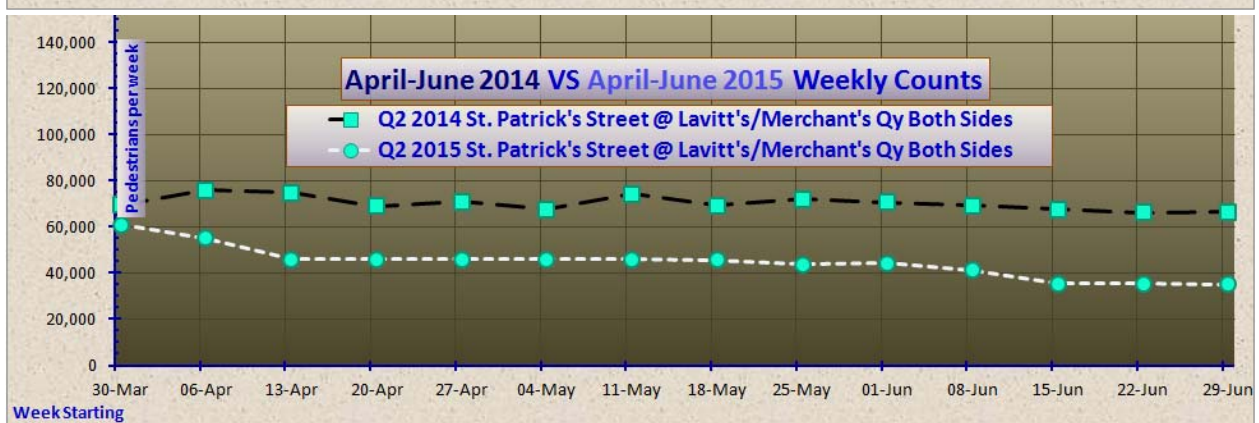
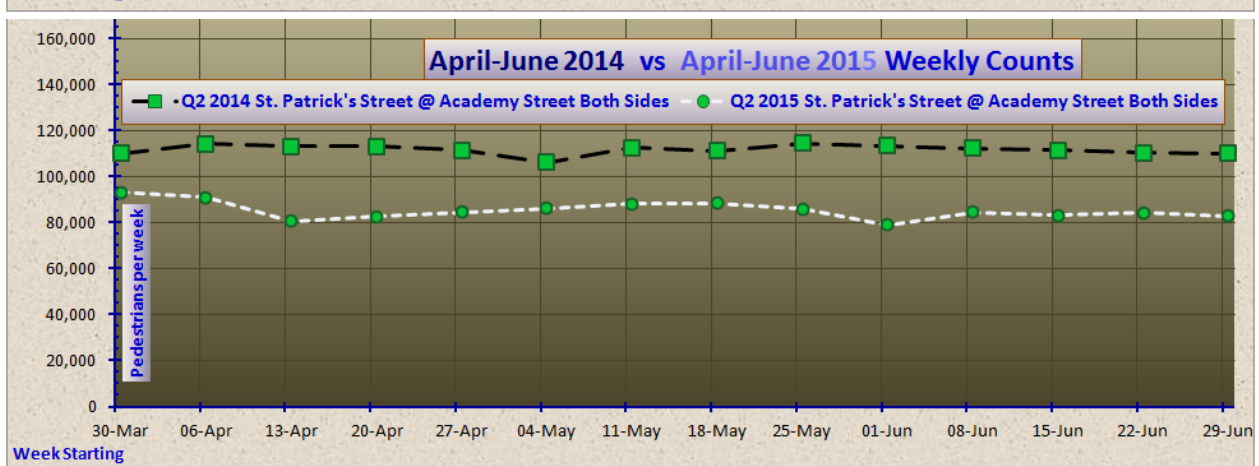
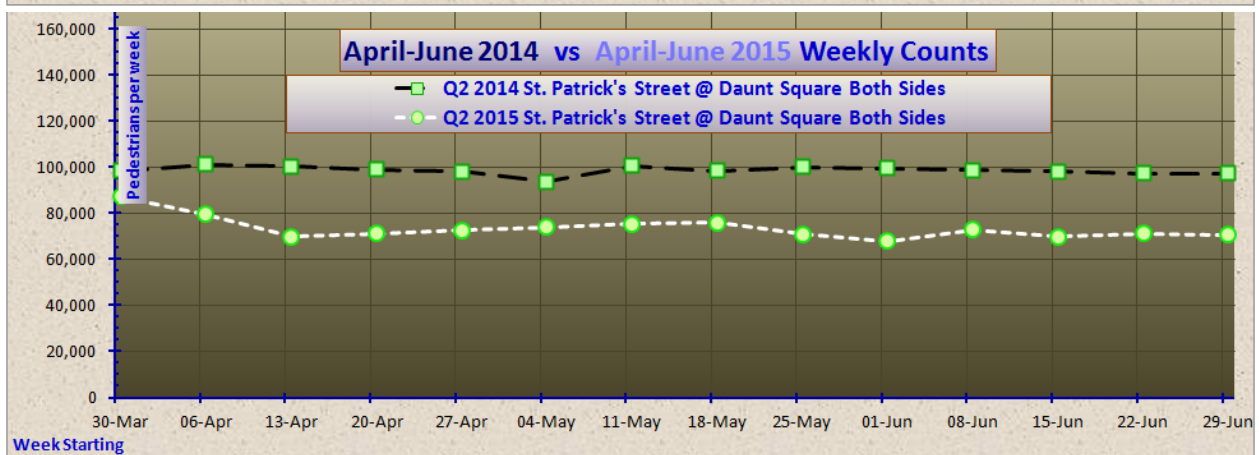
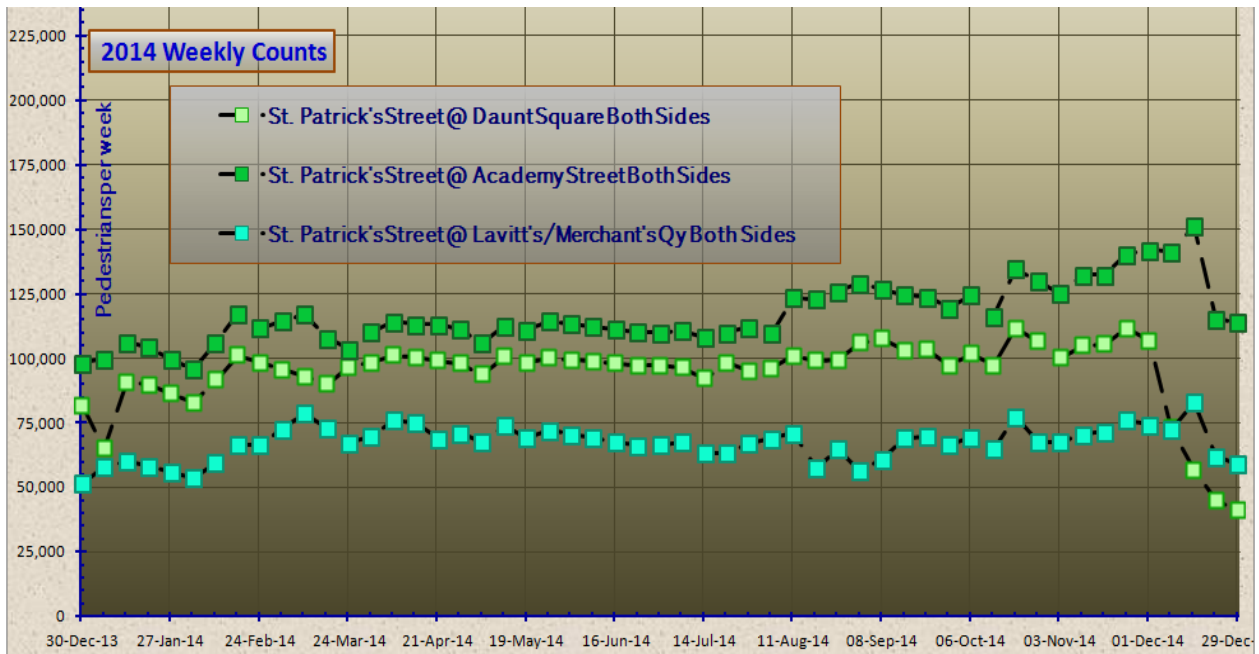


Merchant's Quay Pedestrian Count Site



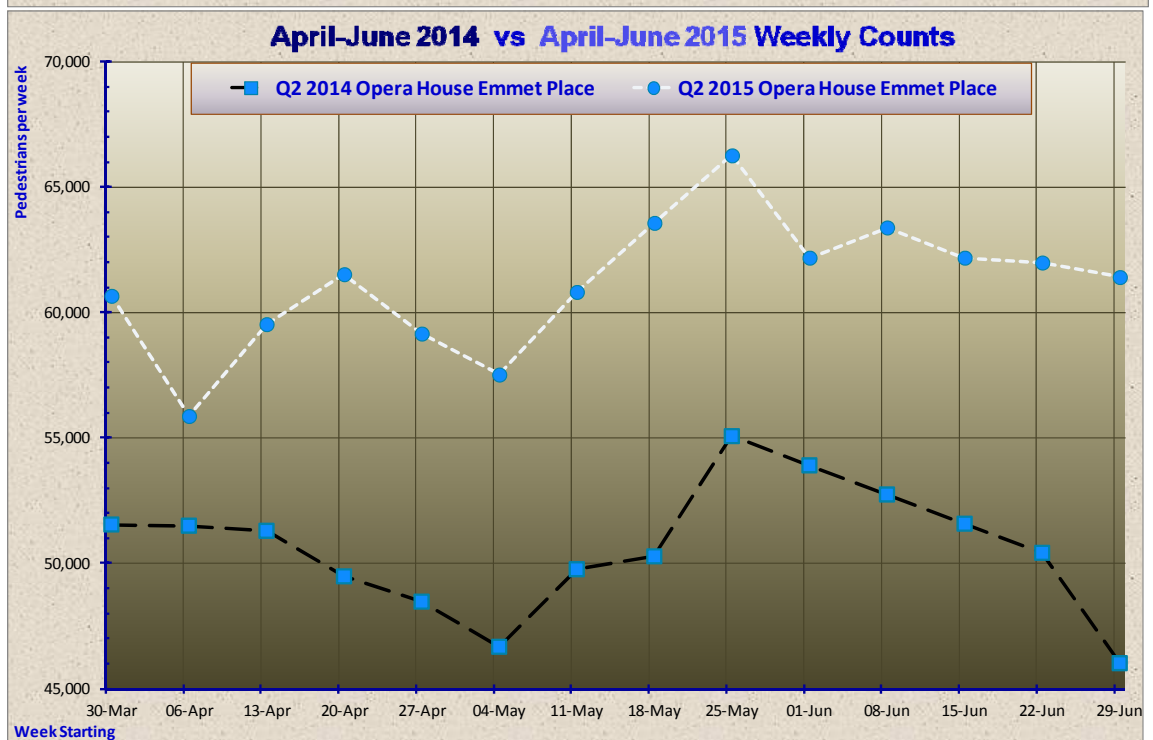
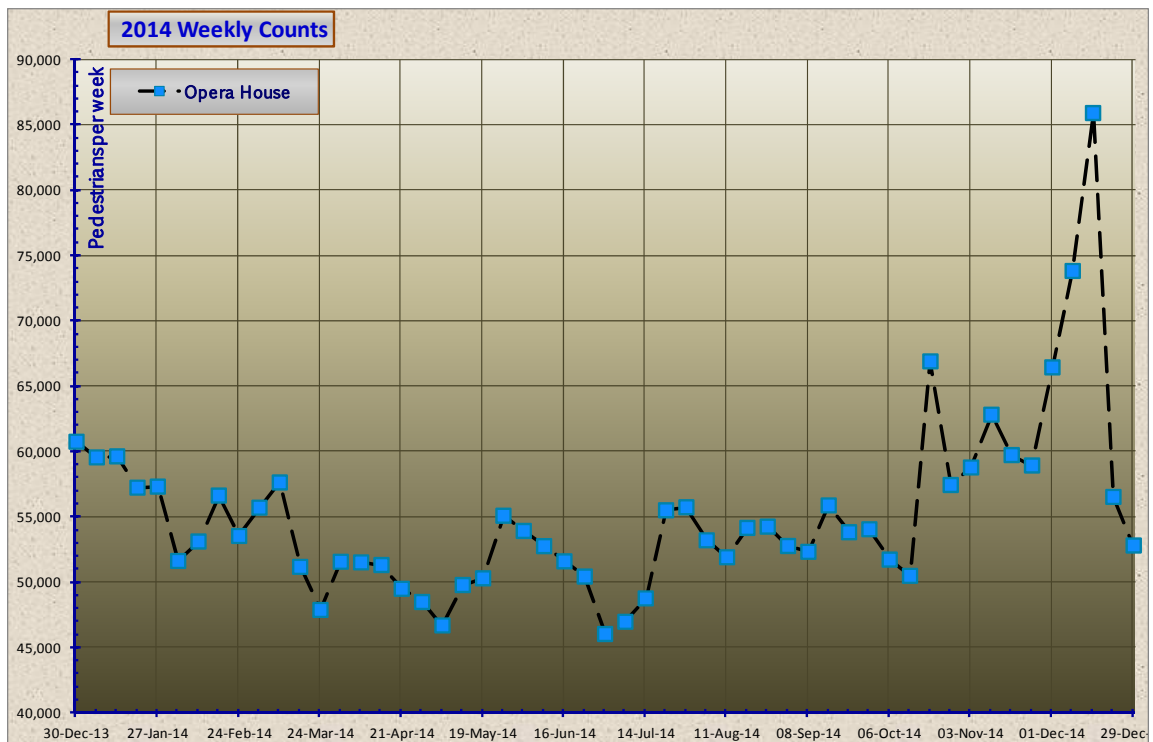
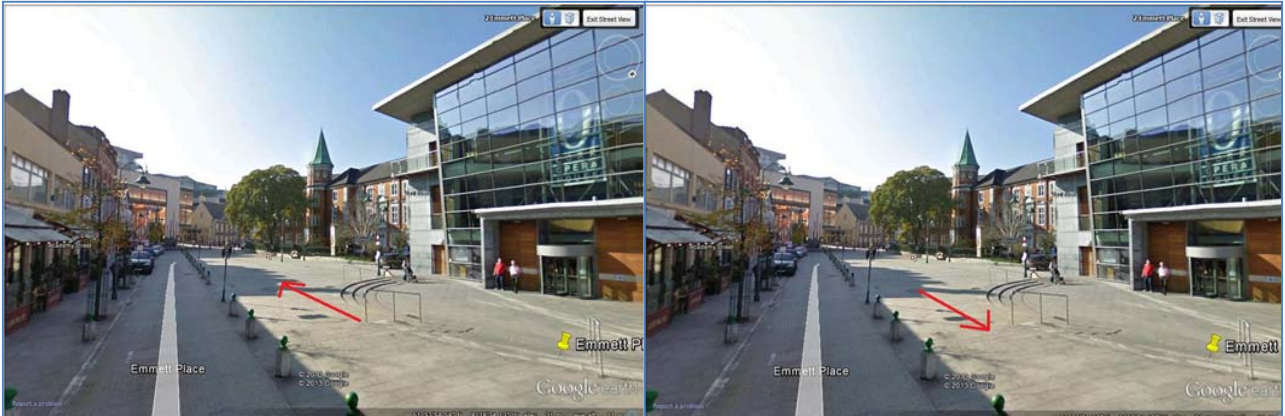
St. Patrick's Street @ Lavitt's Quay Pedestrian Count Site





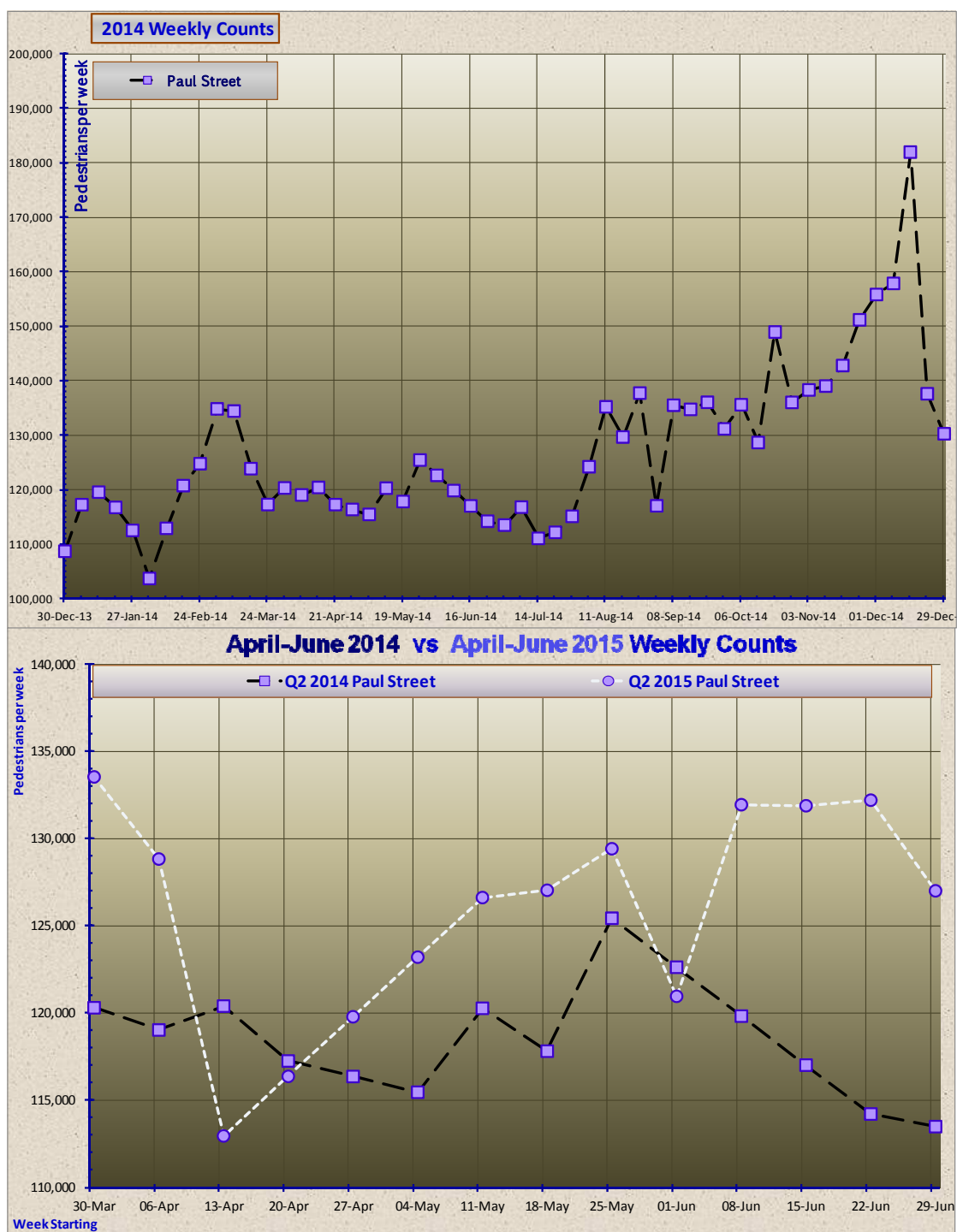
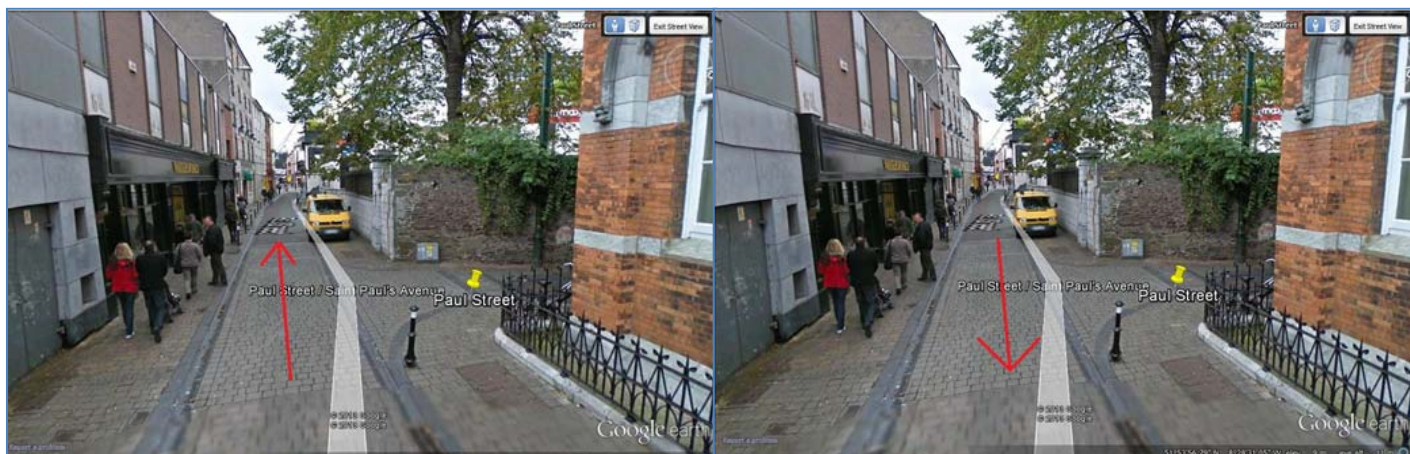
Emmet Place/Opera House Pedestrian Counts *Weekly Variations*

Opera House Pedestrian and Vehicle Count Sites



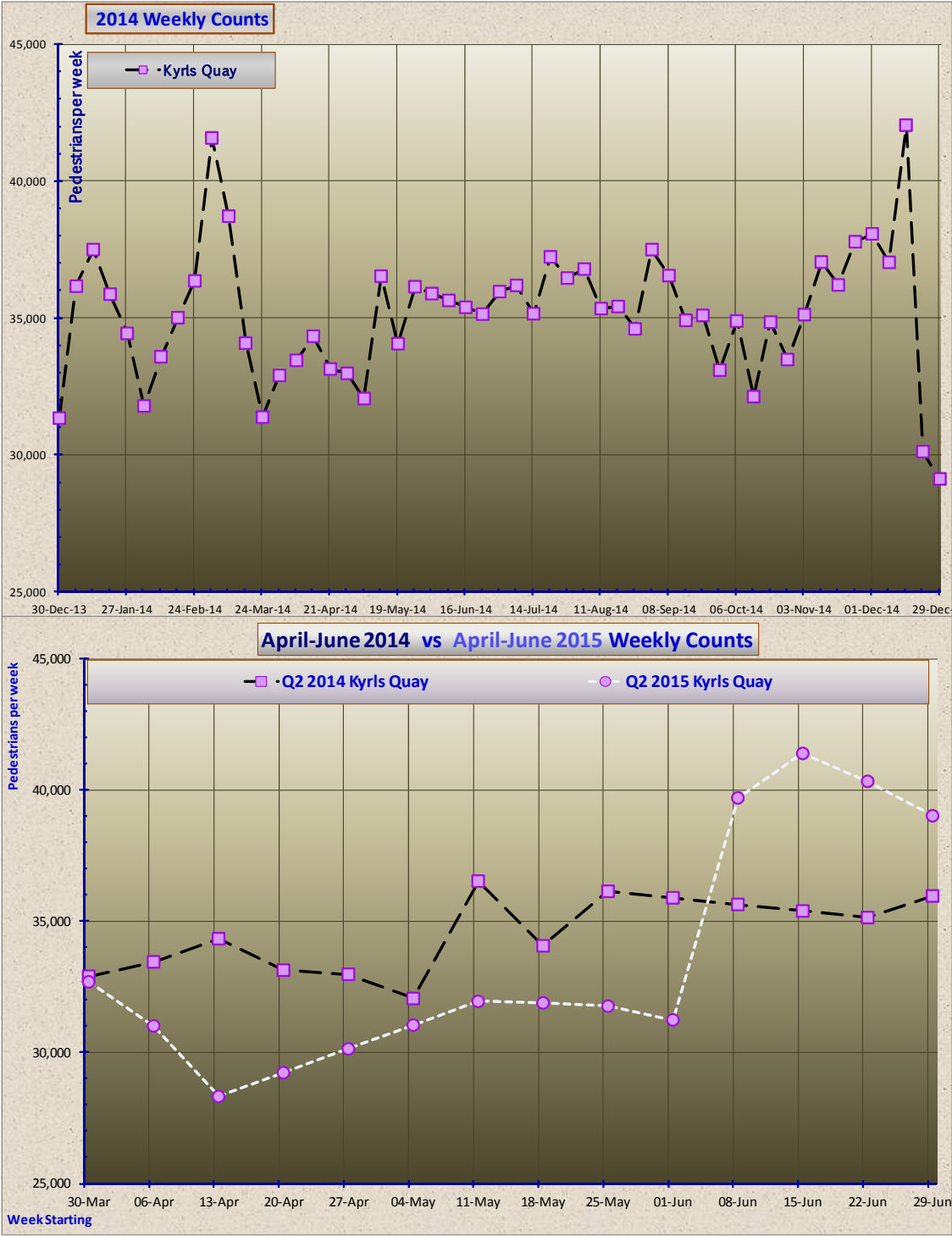
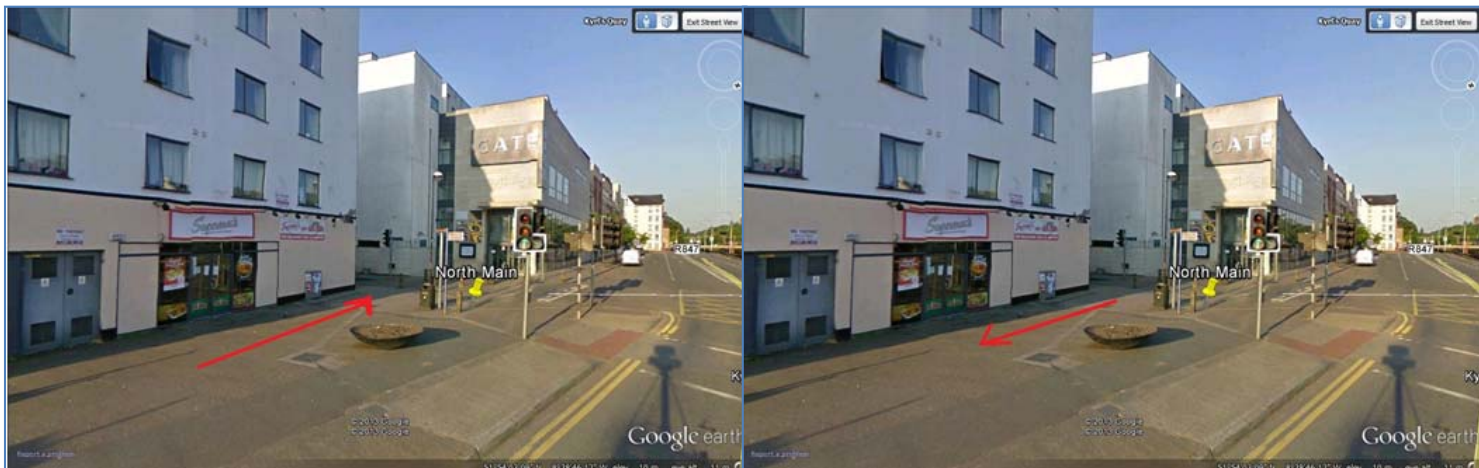
Paul Street Pedestrian Counts Weekly Variations

Paul Street Pedestrian Count Site



Kyrl's Quay Pedestrian Counts Weekly Variations

Kyrl's Quay Pedestrian Counts



2014 vs. 2015 Junction Counts *Weekly Variations*

Chart of Weekly Counts at all sites in 2014

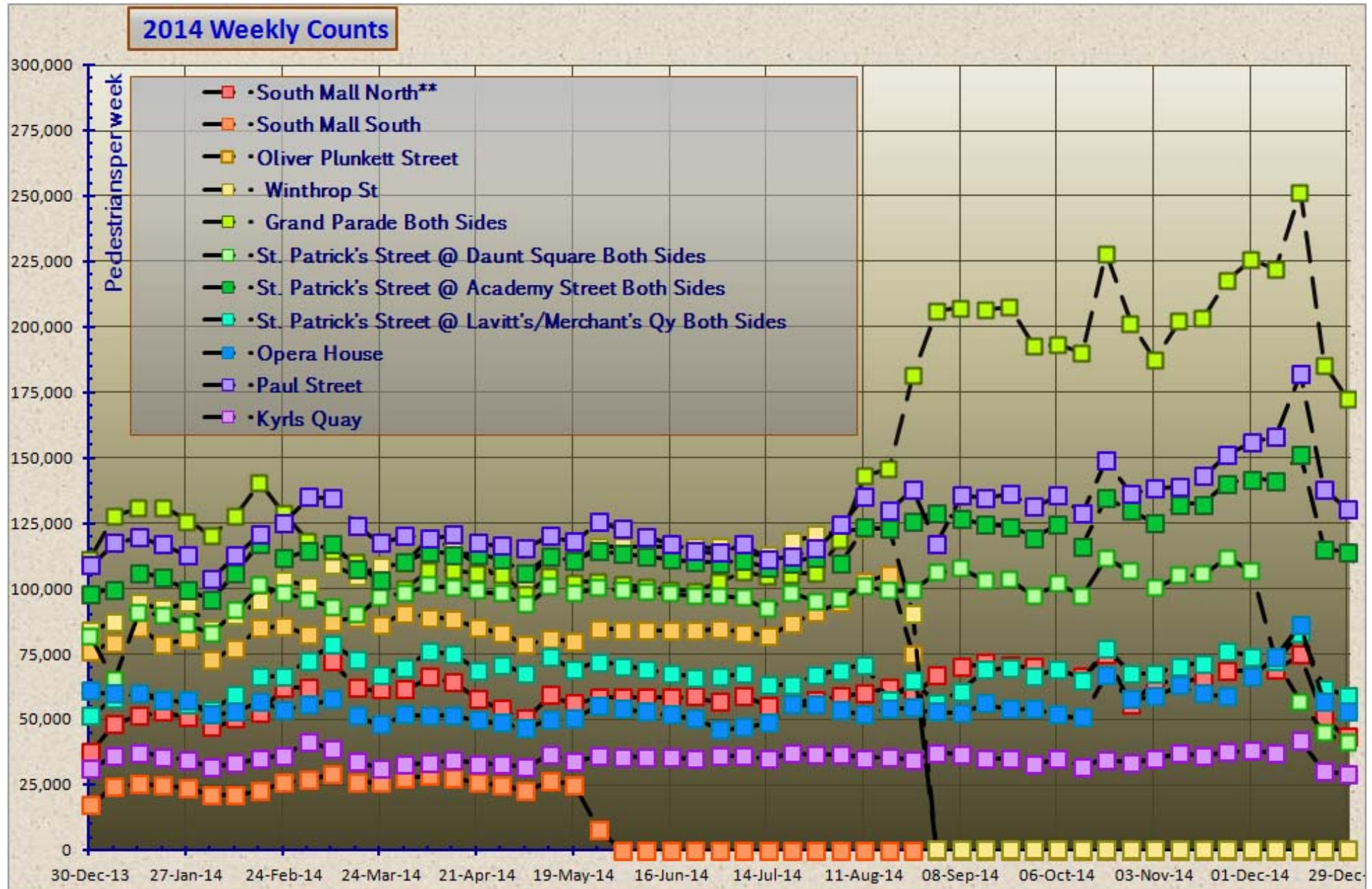


Chart of Weekly Counts at all sites in Q1&Q2 2015

