



PROVISION OF INFORMATION REGARDING APPROPRIATE ASSESSMENT SCREENING

CORK CITY

LOCAL ECONOMIC AND COMMUNITY PLAN – 2016-2021

(INCLUDES AMENDMENTS MADE AFTER PUBLIC CONSULTATION PERIOD)

Rev.	Status	Author	Reviewed By	Approved By	Issue Date
01	Final	PS	PS	PS	17/10/15

Contents

1	INTRODUCTION	3
1.1	Background	3
1.2	Aim of this Report.....	3
2	DESCRIPTION OF THE PROPOSED PLAN	4
2.1	Overview	4
2.2	Relationship between the LCEP and the City Development Plan.	5
3	METHODOLOGY.....	6
3.1	Formal Guidance.....	6
3.2	Sources of Information Used	6
4	Description of European Sites	7
4.1	Identification of European sites.....	7
4.2	Reasons for Designation, Site Sensitivities and Threats.....	9
5	IDENTIFICATION OF POTENTIAL LIKELY SIGNIFICANT EFFECTS	10
5.1	Identification of Likely Significant effects	10
5.2	Protective Policies already in place in the City Development Plan.....	10
5.3	Results of analysis.....	11
5.4	In-combination effects.....	13
6	SCREENING CONCLUSIONS	14
	References	15

1 INTRODUCTION

1.1 Background

Proposed plans and projects must undergo a formal “test” or “screening” to see if they would have likely significant effects on specific sites designated for their nature conservation importance, under Part 5 of the of the European Communities (Birds and Natural Habitats) Regulations, 2011. These sites are those designated under the European Commission’s Natura 2000 network of sites. These sites are designated on the basis of the presence of certain habitats and species that are deemed to be of international importance.

The EC Habitats and Birds Directives are the framework for the designation of these sites. The EC Habitats Directive requires the “screening” of plans and projects under Article 6(3). If the screening process results in a judgement that likely significant effects may occur or cannot be ruled out, then a more detailed ‘appropriate assessment’ (AA) is required. Whilst the structure of this assessment process is not laid down in law, there are guidance documents that are used to provide an indication of how this assessment may be carried out.

In order to ensure that the Cork City Local Economic and Community Plan 2016-2021 (“LCEP”) complies fully with the requirements of Article 6 of the Habitats Directive and all relevant Irish transposing legislation, Cork City Council appointed Scott Cawley Ltd. to analyse the Plan to see if it requires an AA and prepare an AA Screening Report to inform the Council during their AA Screening process.

Following the receipt of submissions on the Draft Plan during the public consultation period of 24th May - 14th June 2016, amendments to the draft LCEP were recommended. The Plan was then revised and re-displayed from 8th August - 16th September 2016. Further amendments were proposed and made to the LCEP as a final version.

This document records the analysis of the overall LCEP, as amended following the period of public consultation as part of the screening of the overall Plan and therefore represents an updated version of the previous AA Screening documentation.

This Screening Report will inform the screening of the LCEP by Cork City Council who are the competent authority for the AA Screening process. An AA determination will be issued by the Council as its formal record of the AA Screening Process.

1.2 Aim of this Report

The aims of this report are:

- To identify any linkages between the sensitivities of the individual European sites and the implications of the Plan as amended, taking any protective policies within overarching plans such as the Cork City Development Plan 2015-2021 into account;

-
- To determine if the implementation of the Plan as amended, could result in likely significant effects on the European sites in terms of impacts on their sensitivities.

2 DESCRIPTION OF THE PROPOSED PLAN

2.1 Overview

“Pure Cork- An Action Plan for the City” represents the Local Economic and Community Plan for Cork City. It is an action-driven plan used to guide economic and community development in the city over the next six years. This plan will seek to build on the structures, work and achievements of Cork 2012 – Imagine Our Future (Cork City Council, 2001) and the work of the Cork City Development Board.

This plan is structured around 15 High Level Goals (HLG’s) that are driven by the vision set out in the Cork City Development Plan (2015-2021):

“...to be a successful, sustainable regional capital and to achieve a high quality of life for its citizens and a robust local economy, by balancing the relationship between community, economic development and environmental quality. It will have a diverse innovative economy, will maintain its distinctive character and culture, will have a network of attractive neighbourhoods served by good quality transport and amenities and will be a place where people want to live, work, visit and invest in.”

- That Cork will have vibrant, resilient, inclusive, sustainable communities where people have a good quality of life and access to quality public services
- To ensure balanced and sustainable economic development and employment in the city
- To promote social inclusion and equality by ensuring that all residents of Cork City have equal opportunities to access, participate and engage in the social, economic and lifelong learning opportunities in the city

It is not the purpose of this Report to reproduce the contents of the Plan (as amended) but to put the various relevant elements in the context of the potential for impacts on European sites. One of the challenges of the AA screening process is to translate high level goals into the potential for perceptible changes to the natural environment.

In some cases the assessment of the high level Goal cannot be directly translated to spatial-specific changes, for example: Goals: *“To ensure Cork is a healthy city that connects to improve the health and well-being of all its people and reduce health inequalities and recognises the need for a holistic approach to health and well being.”* has a very broad level of application. Objective *“Strengthen and promote Cork’s Maritime activities”* has a more defined focus but is still challenging to link this to likely significant effects on European Sites. Once translated into Actions such as *“Investigate the feasibility of a City Maritime festival with links between river activities and on-shore river bank activities.”* then this can be directly related to the potential impacts that this action could have. But it still lacks geographic specificity which means that the precise location of any potential impact is not known.

2.2 Relationship between the LCEP and the City Development Plan.

While this plan recognises and reflects the importance of spatial development, it is not a spatial development plan and, as this AA Screening has shown, does not aim to provide support for specific actions in specific locations. The forthcoming National Planning Framework (NPF), the Southern Regional Spatial and Economic Strategy (RSES) and the existing Cork City Development Plan 2015-2021 will provide the strategic guidance for sustainable land use planning for the city.

In accordance with the Local Government Reform Act 2014, the implementation of the LCEP shall however be consistent with the following:

- The National Spatial Strategy (NSS) 2002 – 2020, to be superceded by the forthcoming National Planning Framework (NPF) 2016-2026.
- The South West Regional Planning Guidelines 2010-2022, to be superceded by the forthcoming Southern Regional Spatial and Economic Strategy (RSES)
- The Core Strategy and objectives of the Cork City Development Plan 2015-2021; and
- Any other City Development Plan and Local Area Plan provisions responsible for the protection and management of the environment including environmental sensitivities.

The preparation of any lower tier plans or strategies may need to be subject to SEA and AA processes as appropriate.

The LCEP will sit within the other strategic plans that influence economic and community development in Cork City and therefore will be implemented alongside other policies and objectives contained therein. The current Plan has undergone AA Screening and was not deemed to pose any likely significant effects on the European sites as a result of the protective policies that were integrated into the Plan.

The City Development Plan (CDP) contains several maps that identify areas of ecological importance (national and European designated areas) and also lists of policies that protect against adverse effects on these sites. It is therefore reasonable to assess the LCEP in the context of the current CDP and to assume that the protective policies will also apply.

3 METHODOLOGY

3.1 Formal Guidance

The Screening stage has taken account of guidance contained in the following documents:

- *Appropriate Assessment of Plans and Projects in Ireland - Guidance for Planning Authorities*. (Department of Environment, Heritage and Local Government, 2010 revision).
- *Appropriate Assessment under Article 6 of the Habitats Directive: Guidance for Planning Authorities*. Circular NPW 1/10 & PSSP 2/10.
- *Assessment of Plans and Projects Significantly Affecting Natura 2000 sites: Methodological Guidance on the Provisions of Article 6(3) and (4) of the Habitats Directive 92/43/EEC* (European Commission Environment Directorate-General, 2001); hereafter referred to as the EC Article 6 Guidance Document. The guidance within this document provides a non-mandatory methodology for carrying out assessments required under Article 6(3) and (4) of the Habitats Directive.
- *Managing Natura 2000 Sites: The Provisions of Article 6 of the Habitat's Directive 92/43/EEC* (EC Environment Directorate-General, 2000); hereafter referred to as MN2000.
- *Guidance Document on Article 6(4) of the 'Habitats Directive' 92/43/EEC. Clarification of the Concepts of Alternative Solutions, Imperative Reasons of Overriding Public Interest, Compensatory Measures, Overall Coherence*. Opinion of the European Commission (European Commission, January 2007).
- *Guidelines for Good Practice Appropriate Assessment of Plans Under Article 6(3) Habitats Directive* (International Workshop on Assessment of Plans under the Habitats Directive, 2011)

3.2 Sources of Information Used

Information relied upon included the following information sources, which included maps, ecological and water quality data:

- Ordnance Survey of Ireland mapping and aerial photography available from www.osi.ie;
- Online data available on European sites as held by the National Parks and Wildlife Service (NPWS) from www.npws.ie;
- Information on land-use zoning from the online mapping of the Department of the Environment, Community and Local Government <http://www.myplan.ie/en/index.html>;
- Information on water quality in the area available from www.epa.ie;
- Information on the South Western River Basin District from www.wfdireland.ie;
- Information on soils, geology and hydrogeology in the area available from www.gsi.ie;
- Information on the status of EU protected habitats and species in Ireland (National Parks & Wildlife Service, 2013a & 2013b);
- Cork City County Development Plan 2015-2021 including the Screening for Appropriate Assessment.

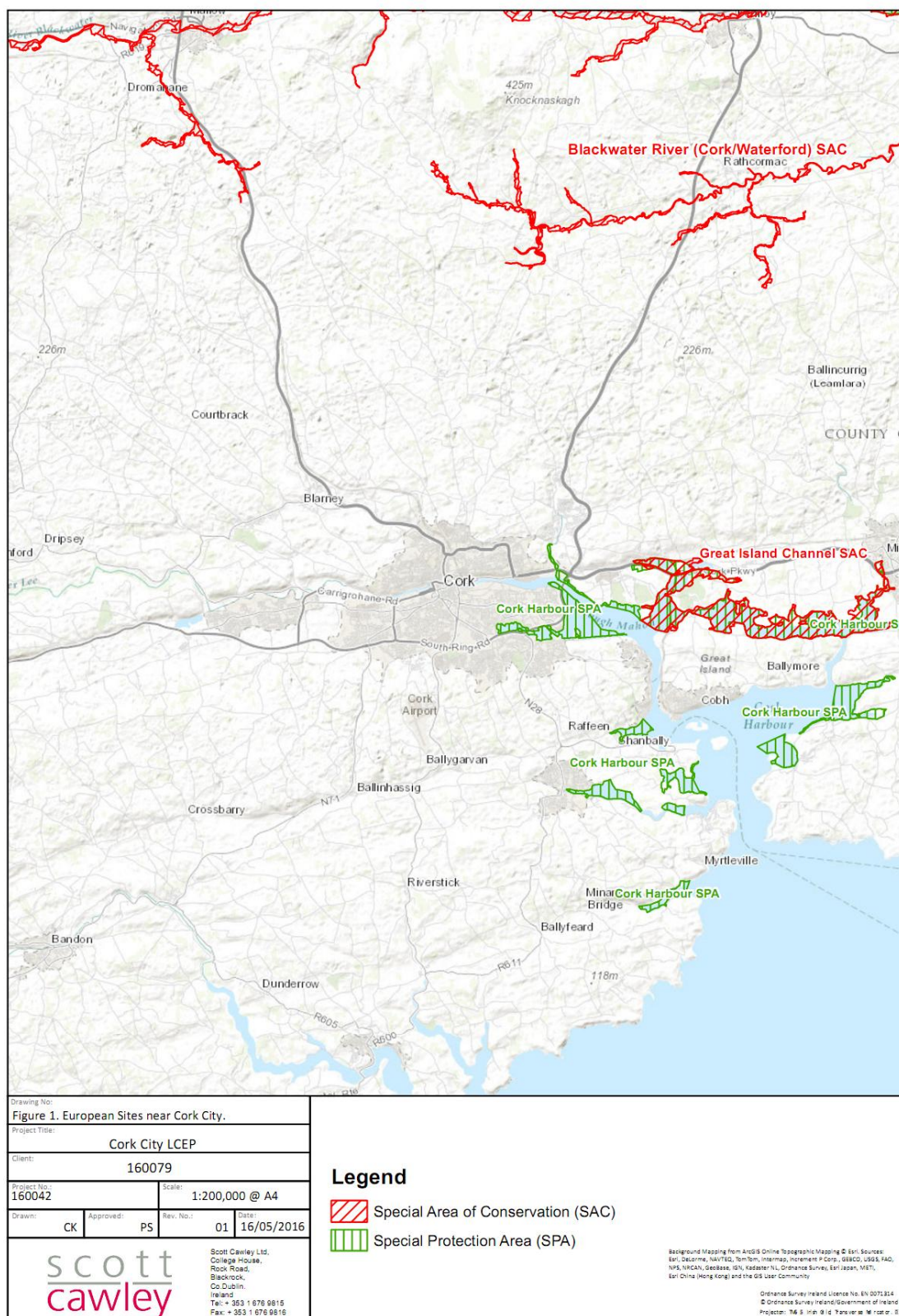
4 Description of European Sites

4.1 Identification of European sites

Table 1 below list those sites that would be regarded to be within the zone of influence of the LCEP. These are sites that are within, directly adjacent or linked to Cork City by reasonable physical or ecological pathways so that changes in the City area would be capable of being perceived at these sites.

Spatial boundary data on the Natura 2000 network was referenced against the boundaries presented on the NPWS website on 30th April 2016. All European sites which fall within 15km of the Plan boundary are listed in Table 1 below, and presented in Figure 1.

Table 1 European Sites	
Special Areas of Conservation	Special Protection Areas
Great Island Channel SAC (001058)	Cork Harbour SPA (004030)
Blackwater River (Cork/Waterford) SAC (002170)	



4.2 Reasons for Designation, Site Sensitivities and Threats

In order to identify those sites that could be potentially affected, it was necessary to describe the European site in the context of why it has been designated (i.e. its “Qualifying Interests”). The Qualifying Interests were extracted from the NPWS website database (www.npws.ie) and Status of EU Protected Habitats and Species in Ireland (NPWS, 2013).

The results of this desktop exercise are presented in Appendix B. This table lists each European Site within 15km of the LCEP and the qualifying interests for European Sites.

The key output of this stage was the identification of the types of likely significant effects that could affect the European sites. These can then be related to the consequences of implementing the LCEP to see if there was a risk of any likely significant effects.

List of threats to European Sites relevant to the LCEP:

- Abstraction
- Agricultural Improvement/Restructuring agricultural land holdings,
- Aquaculture,
- Camping/Caravans,
- Disturbance from recreational activities at coast and offshore.
- Disturbance from recreational activities at coast and offshore.
- Dredging and dumping at sea.
- Erosion,
- Fertilisation.
- Golf Courses,
- Grazing,
- Hard coastal developments.
- Horse riding –
- Infilling of Intertidal mudflats,
- Invasion by a species, ,
- Invasive predatory species (Rats, birds, foxes). Offshore pollution (chemical spillages).
- Non-motorised vehicles,
- outdoor sports & motorised vehicles,
- Paths Tracks & Cycling Routes,
- Pollution from upstream urbanisation,
- Sand & Gravel extraction - Removal of Beach materials,
- Sea defences & coastal protection works.
- Stock Feeding, ,
- Trampling overuse,
- Undergrazing,
- Underwater noise and vibration, and
- Walking.

5 IDENTIFICATION OF POTENTIAL LIKELY SIGNIFICANT EFFECTS

5.1 Identification of Likely Significant effects

This section documents the final stage of the screening process. It used the information collected on the sensitivity of the qualifying interests of each European site and describes any likely significant effects of implementation of the LCEP.

5.2 Protective Policies already in place in the City Development Plan

This assessment was based on the text of the LCEP and took into account the effects of the existing protective policies (referred to as Impact Avoidance Measures) in the City Development Plan. Relevant protective policies are listed below:

Reference within CDP	Policy in CDP
Objective 10.7 Designated Areas and Protected Species	'To ensure that any plan/project and any associated works, individually or in combination with other plans or projects, are subject to Appropriate Assessment Screening to ensure there are no likely significant effects on the integrity (defined by the structure and function) of any Natura 2000 site(s) and that the requirements of Article 6(3) and 6(4) of the EU Habitats Directive are fully satisfied. When a plan/project is likely to have a significant effect on a Natura 2000 site or there is uncertainty with regard to effects, it shall be subject to Appropriate Assessment. The plan/project will proceed only after it has been ascertained that it will not adversely affect the integrity of the site or where, in the absence of alternative solutions, the plan/project is deemed imperative for reasons of overriding public interest, all in accordance with the provisions of Article 6(3) and 6(4) of the EU Habitats Directive.'
Objective 10.8 Non Designated Areas of Biodiversity Importance	<ul style="list-style-type: none"> a. To work with local communities, groups, landowners, National Parks and Wildlife Service and other relevant parties to identify, protect, manage and where appropriate enhance and promote sites of local biodiversity value; b. To map the City's ecological networks/corridors of local biodiversity value outside of designated areas; c. To encourage the management of features which are important for wild flora and fauna. Such features are those which by virtue of their linear or continuous nature e.g. rivers, tree groups or hedgerows are essential for the migration dispersal and genetic exchange of wild species.
Objective 10.9 River and Waterway Corridors	<p>To protect and maintain the integrity and maximise the potential of the natural heritage and biodiversity value of the River Lee and its associated watercourses. To promote an integrated approach to the future development of the River Lee so that it includes all aspects of use e.g. recreation, maritime history and economic factors</p> <p>Development proposals in river corridors shall:</p> <ul style="list-style-type: none"> a. Dedicate a minimum of 10m from the waters edge in channelized rivers for amenity, biodiversity and walkway purposes; b. Dedicate a minimum of 15m from the top of the bank in non- channelized rivers for amenity, biodiversity and walkway purposes; c. Preserve the biodiversity value of the site subject to Ecological Assessment by a suitably qualified Ecologist; d. Shall not involve landfilling, diverting, culverting or realignment of river and stream corridors; e. Shall not have a negative effect on the distinctive character and appearance of the waterway corridor and the specific characteristics and landscape elements of the individual site and its context.
Objective 10.12 Alien Species	To implement measures to control and prevent the introduction and establishment of ecologically damaging alien invasive species (e.g. Japanese Knotweed and Himalayan Balsam).
Objective 11.5 Tramore Valley Park	To pursue the delivery of the Tramore Valley Park and the proposed landbridge that will connect the areas of the park to the north and south of the N40, subject to Ecological Assessment and Appropriate Assessment Screening.
Objective 11.6 Marina	To pursue the delivery of the Marina Park subject to Ecological Assessment and

Park	Appropriate Assessment Screening.
Objective 11.12 River Use and Management Plan	a. To pursue the development of a River Use and Management Plan to define how the recreational use of the city's waterways can be optimised subject to Ecological Assessment and Appropriate Assessment Screening; b. To explore the potential for a new public water slipway in Cork City in partnership with stakeholders.
Objective 11.13 Amenity Routes	To pursue the development of a network of high quality amenity routes, particularly along waterways, and linking existing and proposed parks and public open spaces, and to work with Cork County Council and other stakeholders to achieve and improve external linkages subject to Ecological Assessment and Appropriate Assessment Screening.
Objective 12.1	e. To ensure an adequate, sustainable and economic supply of good quality water for domestic, commercial and industrial needs for the lifetime of the Plan (subject to compliance with Article 6 of the Habitats Directive) f. To provide adequate wastewater treatment facilities to serve the existing and future population of the city and to ensure that adequate and appropriate wastewater infrastructure is in place prior to the occupations of new development. 21 g. To ensure that development would not have an unacceptable impact on water quality and quantity including surface water, ground water, designated source protection areas, river corridors and associated wetlands, estuarine waters, coastal and transitional waters.
Objective 12.2:	Cork City Council will prepare a Storm Water Management Plan for the City.
Objective 12.3 Sustainable Urban Drainage Systems	Planning applications shall include proposals for managing stormwater in accordance with details set out at www.irishsuds.com (unless superseded by policies and standards set out in the adopted "Storm Water Management Plan per Objective 12.2) and shall minimise and limit the extent of hard surfacing and paving.
Objective 12.4 Surface Water Discharges from Roads	To ensure that all significant road projects/upgrades with surface water discharges to the watercourses flowing through the City's administrative area and Cork Harbour, have petrol/oil interceptors installed to prevent hydrocarbon pollution of the receiving waters.
Objective 12.13 Lee Catchment Management Plan / Lower Lee Flood Relief Scheme	Cork City Council shall have regard to the recommendations of the Draft Lee Catchment Flood Risk Assessment and Management Plan and shall incorporate the updated hydraulic modelling, mapping data and recommendations of South West CFRMP / Lee CRFMP (River Catchment Framework Management Plan) and the Lower Lee Flood Relief Scheme as each plan progresses.
Objective 12.14 Flood Risk Management in Development Proposals	Cork City Council will implement The Planning System and Flood Risk Management: Guidelines for Planning Authorities, 2009 in the preparation of land-use plans and determining planning applications.
Objective 12.16 Floodplains	To protect, enhance and manage the City's floodplains, wetlands and coastal habitat areas that are subject to flooding as vital 'green infrastructure' which provides space for storage and conveyance of floodwater, enabling flood risk to be more effectively managed and reduce the need to provide flood defence infrastructures.
Objective 12.18 Air Quality	To protect and improve air quality in Cork City in accordance with the Air Quality Standards Regulations 2011 and Ambient Air Quality and Cleaner Air for Europe (CAFE) Directive (2008/50/EC).
Objective 12.19 External Lighting	To require that the design of external lighting minimises the incidence of light spillage or pollution on the surrounding environment and results in no adverse impact on residential amenities or distraction to road users. Development proposals that require lighting of outdoor areas shall be required to include details of external lighting scheme and proposed mitigation measures.
Objective 12.21 Noise Levels in Developments	To require all developments to be designed and operated in a manner that will minimize and contain noise levels, Where appropriate, the City Council shall apply conditions on new developments / uses that restrict noise emissions and hours of operation, in particular, night time uses such as public houses, private members clubs, casinos, fast food take-aways, restaurants and nightclubs; or conditions on noise sensitive developments / uses to mitigate the effects of existing noise levels.

5.3 Results of analysis

Appendix A presents the results of the screening of the Actions proposed via the Objectives and Goals as amended following the public consultation period. It is not deemed good practice to screen the amendments in isolation from the rest of the Plan and the entire Plan, as amended forms the focus for this screening process.

The protective policies identified from the list provided above and the existing legislation requiring project-level AA screening are deemed to provide enough of a safeguard to prevent any implementation scenario having likely significant effects on the European Sites. They effectively provide opportunities whereby the impacts are captured at other levels of consent. Some of the goals also provide opportunities for positive impacts through increasing awareness of the natural environment in the area around Cork City.

During the period of public display, the Environmental Law Implementation Group have highlighted that the City Development Plan did not undergo AA Screening. The CDP was screened in the context of the objectives after they had been redrafted to avoid likely significant effects. Therefore it was deemed that the protective policies were robust enough to avoid likely significant effects. Notwithstanding this, it is regarded to be entirely legitimate to assess the impact of the LCEP in the context of how the CDP will influence how spatial-specific objectives will be delivered.

The list of *projects* which receive a level of support from the LCEP are listed below:

- *Healthy Campus initiative in St. Finbarr's Hospital and St. Mary's Campus.*
- *City Maritime festival*
- *Cork Walks project*
- *redevelopment of the City Harbour/Docklands area*
- *establishment of data centre in Cork.*
- *South East Strategic Corridor study*
- *South Western and Central Strategic Corridor study*
- *Cork Area Transit Study*
- *Bus Rapid Transit route*
- *Cork cycle network*
- *(Cork to Ringaskiddy) upgrading*
- *Dunkettle interchange upgrade*
- *Northern Ring Rd to complete ring of City*
- *M20 Cork Limerick motorway*
- *N22 Cork to Killarney*
- *Cork Airport*
- *Passenger ferry from Cobh to Ringaskiddy*

Several of these projects, especially the proposed road infrastructure, redevelopment of Cork Docklands and developments at Cork Airport will be captured at the project level whereby they will be screened for the need to undertake AA. Other initiatives such as the Maritime Festival and Cork Walks project will be captured by the catch-all objective 10.7 in the CDP prior to the implementation at a project scale.

All of the above actions will be likely to happen in the absence of the LCEP and therefore the LCEP should not be regarded to the implementation vehicle for these specific actions.

5.4 In-combination effects

Since all elements of the LCEP have individually been screened out either because they will have no effect at all on a European site or because the element is too general in nature, they do not require an in-combination assessment, since clearly they will also have no cumulative effect. This is also the case for those elements of the LCEP that have been screened out because they are general policy statements, or because they quote activities referred to in, but not proposed by the plan.

According to the Cork City Development Plan 2015-2021 AA Screening Statement, the following plans have the potential to interact with the City Development Plan:

- Western River Basin Management Plan 2009-2015;
- Cork City Biodiversity Plan 2009-2014;
- Draft Cork County Development Plan 2015-2021;
- Cork Area Strategic Plan Update 2008;
- Draft Mahon Local Area Plan 2014-2020
- South Docks Local Area Plan 2008-2018;
- Blackpool Local Area Plan 2011-2017;
- Farranferris Local Area Plan 2009-2015;
- North-West Regeneration Masterplan 2011;
- Water Services Investment Programme;
- IPPC Programme;
- Local Authority Discharge;
- Groundwater Pollution Reduction Programmes;
- Surface Water Pollution Reduction Programmes;
- Draft Lee Catchment Flood Risk Assessment and Management Study;

The AA Screening Statement also states:

“The Regional Planning Guidelines for the South-West Region 2010-2022 provides the framework within which regional development plans are to be prepared. Chapter 6 of this document (Environment and Amenities Strategy) sets a policy (REAS-03) to “state that all projects likely to have a significant effect on Natura 2000/European sites will be subject to Habitats Directive assessment, and projects will only be approved if they comply with the Habitats Directive”. There is also a policy (REAS-04) “It is an objective to achieve regional water quality targets by implementing the River Basin Management Plans and ensure that development undertaken or permitted by local authorities; other public agencies or private operators, shall not contravene the objectives of the Water Framework Directive, the European Communities Environmental Objectives (Surface Waters) Regulations 2009 SI 272 of 2009 and the European Communities Environmental Objectives) Groundwaters) Regulations 2010, SI 9 of 2010.

The County Development Plans and Local Area Plan identified all include numerous policies and objectives aimed at protecting the natural environment, including Natura 2000 sites. Explicit reference to Appropriate Assessment Screening for plans and projects are made in these plans, and the plans themselves have been subject to Appropriate Assessment, with findings of no significant adverse effects.

No other pathway has been identified by which any of the Plans and Programmes identified could have a significant ‘in combination’ effect on any of the Natura 2000

sites identified. In fact, the in combination effect of the water related Plans and Programmes would have positive effects on water quality resulting in positive indirect impacts on Cork Harbour SPA and Great Island Channel SAC.” p22.

6 SCREENING CONCLUSIONS

Following an analysis of the LCEP after amendment, and potential relationships with European sites, it was concluded that there would be no likelihood of significant effects on any European sites, either alone or in combination with other plans or projects. This was informed by the collection of data in the European sites and identification of the condition, sensitivities and threats to the integrity of the site.

It was concluded that none of the aspects of the LCEP would give rise (directly or indirectly) to any of the threats listed in Section 4.2 after the impact avoidance policies provided for in the existing City Development Plan have been taken into account. There are no geographic-specific proposals that are contained within the LCEP and therefore no direct linkages between the proposal and any specific receptor. Generic impacts of such developments are addressed by the generic protective policies within the existing City Development Plan and are deemed to be adequate. Individual proposals will require screening for appropriate assessment and possibly full assessment. Proposals that would pose adverse effects on the integrity of the European Sites would not be permitted.

Therefore it is our professional opinion that there is no requirement to carry out further stages of Appropriate Assessment on the Plan.

References

- DoEHLG** (2010) *Appropriate Assessment of Plans and Projects in Ireland - Guidance for Planning Authorities* (Department of Environment, Heritage and Local Government, Rev Feb 2010)
- Eastern River Basin District** (2009) *South-eastern River Basin District Management Plan 2009*, Available online at <http://www.wfdireland.ie/docs/> [Accessed 26 July 2011]
- European Commission** (2000). *Communication from the Commission on the precautionary principle*
- European Commission** (2001) *Assessment of Plans and Projects Significantly Affecting European sites: Methodological Guidance on the Provisions of Article 6(3) and (4) of the Habitats Directive 92/43/EEC* (European Commission Environment Directorate-General,);
- European Commission** (2000) *Managing European sites: The Provisions of Article 6 of the Habitat's Directive 92/43/EEC* (EC Environment Directorate-General, 2000); hereinafter referred to as "MN2000"
- Environmental Protection Agency** (2011). EPA ENVision Service (internet-based environmental information portal). Available online at: <http://maps.epa.ie/internetmapviewer/mapviewer.aspx> [Accessed 26 July 2011]
- Geological Survey of Ireland** (2011). *GSI Datasets Public Viewer*. Available online at <http://www.gsi.ie/Mapping.htm> [Accessed 28 March 2011]
- Institute of Ecology and Environmental Management** (2006). *Guidelines for Ecological Impact Assessment*. Institute of Ecology and Environmental Management
- NPWS** Circular NPW 1/10 & PSSP 2/10 *Appropriate Assessment under Article 6 of the Habitats Directive: Guidance for Planning Authorities*. (Department of Environment, Heritage and Local Government, March 2010);
- NPWS (2013a)** The Status of EU Protected Habitats and Species in Ireland. Habitat Assessments Volume 2. Version 1.0. Unpublished Report, National Parks & Wildlife Services. Department of Arts, Heritage and the Gaeltacht, Dublin, Ireland.
- NPWS (2013b)** The Status of EU Protected Habitats and Species in Ireland. Species Assessments Volume 3. Version 1.0. Unpublished Report, National Parks & Wildlife Services. Department of Arts, Heritage and the Gaeltacht, Dublin, Ireland.
- National Roads Authority** (NRA) 2009. *Guidelines for Assessment of Ecological Impacts of National Road Schemes*.
- NRA** 2005-2009. *Environmental Construction Guidelines Series*, available online at <http://www.nra.ie/Publications/Environment/#d.en.3463> [Accessed December 2010]

Appendix A: Assessment of Likely Significant Effects of the Proposed Objectives and Supporting Actions.

Table A.1:

Goal: HOUSING

Clearly identify and plan responses to a range of housing issues experienced in Cork City to strengthen the economic and community development of the city.

Objective	Action	Likely significant Effects on European sites	Reference to Protective Policies
Develop a multi-agency response to deliver actions to address current public and private housing need at local level.	Support the delivery of; <ul style="list-style-type: none"> • The Residential Delivery Strategy • Joint Cork City and County Housing Strategy • Social Housing Strategy 2020 • Horizon 2020 Strategy 	There is no spatial reference to these actions. Impacts are not likely to be significant after considering that the requirements of both the City Development Plan and the legislative protection of the areas will be applied successfully.	10.7, 10.8, 10.9, 11.12, 11.13.
	Support the Social Housing Forum to facilitate social housing issues.		
	Share and promote information on supports available to all applicants for social housing, especially young and older population.		
	Continue to support and deliver appropriate housing models for persons leaving treatment centres, prison, mental health facilities.		
	Continue to support interagency approach to Traveller accommodation and strengthen this process to continue to ensure culturally appropriate housing, at an appropriate level in the City, considering all communities.		
Build and support positive social behaviour in social housing	Provide Tenancy support and training to Social Housing tenants on their rights and responsibilities.	No linkage between proposed action and European sites either directly or indirectly. No likelihood of significant	N/A

Develop a holistic approach to tackle homelessness.	Provide supports to build capacity of homeless young adults to participate in education, training or employment, as a pathway out of homelessness.	effects.	
	Continue to support the following projects that address youth homelessness in the city: <ul style="list-style-type: none"> • Cork Foyer • Sophia Housing Project • Youth Homeless Prevention Worker • Youth homeless Forum 		
	Support the prioritisation of appropriate social housing supports to homeless, including: <ul style="list-style-type: none"> • Cork City Council's scheme of letting priorities, including vulnerable housing • Cork City Council's Tenancy Sustainment Scheme 		
	Support the Cork Homeless Forum as a multi-agency approach to addressing homelessness in the city.		
	Continue to support the work of the Cork Homeless Forum in addressing homelessness in the city.		
Develop strong communities with a focus on disadvantaged areas/communities	Investigate and support the regeneration of areas of disadvantage in the city.		
	Implementation of the 'Cork City Northwest Regeneration Masterplan & Implementation Report' (adopted by Cork City Council 14th November 2011), including the delivery of the tenure diversity review recommendations, social, economic and environmental interventions.		

	Develop a strategic plan for housing people with disabilities.		
Support the delivery of appropriate smart technologies within the City's housing stock	Incorporate and support the delivery of appropriate smart building technologies in new build houses and when retrofitting the existing housing stock in the City.		

Table A.2:
Goal: HEALTHY CITY

To ensure Cork is a healthy city that connects to improve the health and well-being of all its people and reduce health inequalities and recognises the need for a holistic approach to health and well being.

Objective	Action	Likely significant Effects on European sites	Reference to Protective Policies
Support the Healthy Cities Strategy	Support the development of the Healthy Campus initiative in St. Finbarr's Hospital and St. Mary's Campus.	Whilst there is a geographic reference both areas are existing campuses and there is no proposals for material changes.	N/A
	Implement the actions in the Healthy Cities Strategy.	No linkage between proposed action and European sites either directly or indirectly. No likelihood of significant effects.	N/A
	Incorporate and support the implementation of the Healthy Cities initiative as a central role for the LCDC.		
Continue to support the development of Cancer prevention and early detection programmes, initiatives and research in Cork City and region	Support the delivery the following: <ul style="list-style-type: none"> • A collaborative community project on cancer prevention and early detection in Cork • A Local Action plan for cancer prevention and early detection and associated research • An information tool to inform local communities on prevention and early detection. 		
	Support capacity building at a local level to tackle issues of inequality in relation to cancer prevention and early detection.		

Support Health Action Zones	Promote positive mental well being and promote physical activity across all age ranges and all population groups.		
	Support the reduction level of consumption of alcohol in Cork City over the next 6 years, including the implementation of the Cork City Alcohol Strategy.		
	Support the implementation of the Cork/Kerry Alcohol Reduction Strategy 2015		
	Investigate the feasibility of the creation of a tobacco free city, including pilot project that builds on existing community health projects such as the “we can quit” programmed in Ballyphehane/Togher and Mayfield communities.		
	Roll out the suicide prevention action plan for Cork City and County, that implements relevant actions set out in “Connecting for Life”, the new national strategy to reduce suicide 2015-2020.		
Support the Cork Local Drugs and Alcohol Task Force Strategy (CLDATF)	Develop engagement and create links with the CLDATF.		
Support the Cork Food Council's Strategy	Develop a food strategy for the city in partnership with relevant stakeholders and enable organisations in the city to transform their food culture.		
	Continue to support and expand the empowerment of people to grow and cultivate their own food locally within the city.		
Support the Cork City Sports Partnership	Support the implementation of the “Cork Sports Partnership Plan”, 2015-2021 within the city.		
Strengthen and promote Cork's Maritime activities by achieving the Cork Tourism Strategy (2016) vision to become “Ireland's Maritime	Investigate the development of a Maritime centre to promote greater use of the river in the City.	Impacts caused by increased coastal recreation or offshore development and activities are not likely to be significant after considering that the requirements of both the CDP and the legislative	10.7, 10.8, 10.9, 11.12, 11.13.
	Investigate the development of a Maritime City Strategy to promote tourism, employment around river based activities in the		

Paradise”.	City.	protection of the areas will be applied successfully and that any projects that would pose adverse effects on the integrity of the European Sites would not be permitted.	
	Investigate the feasibility of a City Maritime festival with links between river activities and on-shore river bank activities.		
Create a better quality of life for city residents.	Review the existing Cork Recreational Needs Study (2003) and Cork City Parks Strategy (2000).	Impacts are not likely to be significant after considering that the requirements of both the CDP and the legislative protection of the areas will be applied successfully. Any proposals that would pose adverse effects on the integrity of the European Sites would not be permitted.	10.7, 10.8, 10.9, 11.12, 11.13.
	Identify and support greater recreational amenities in the city, including integrated walking and cycling links and local parks, through the review of the Cork Recreational Needs Study (2003).		
	Source funding for the development for multi-agency activity camps for children and young people.	No linkage between proposed action and European sites either directly or indirectly. No likelihood of significant effects.	N/A
	Support the delivery of appropriate air monitoring procedures in the city to help achieve better air quality.		
	Support the role of creativity and the arts by: <ul style="list-style-type: none"> Continuing to invest in a strong festival offering across the city that creates positive citizen engagement, builds pride of place and offers creative opportunities for all. Supporting the arts and cultural sector to offer a wide range of experiences for all. Invest in appropriate Arts in Health programmes with relevant partners. 		
Advance and support the development and well-being of people with disabilities through participation in all creative and recreational activities.	Continue to establish new and innovative ways of working with people with disabilities, by working with local and national partners.	No linkage between proposed action and European sites either directly or indirectly. No likelihood of significant effects.	N/A
	Work with local partners in developing a network of arts and disability practitioners.		
Support the implementation of	Support projects and initiatives that promote active travel as an		

<i>National Physical Activity Plan for Ireland</i>	everyday mode of transport by people across the lifespan and of all abilities.		
--	--	--	--

Table A.3:

Goal: COMMUNITY PARTICIPATION

To integrate communities and community and voluntary groups into decision making and to promote civic participation and community engagement.

Objective	Action	Likely significant Effects on European sites	Reference to Protective Policies
Build the capacity of community groups and voluntary organisations on participation and community activism to enable communities to better participate in decision-making.	Deliver, support and promote Training and Education on capacity building to community groups and voluntary organisations on participation and community activism.	No linkage between proposed action and European sites either directly or indirectly. No likelihood of significant effects.	N/A
	Support the continued input of community and business organisations, and especially new organisations, to enable them participate in decision-making at a local level.		
Support the work of the Cork Volunteer Centre	Support and promote the provision of a placement service matching volunteers, with organisations delivering community projects in the city.		
Make consultation in the City easily accessible to all community groups.	Through the PPN, ensure any consultation in the city is easily accessible to community groups and encourages the delivery of participatory decision making.		
	Develop more accessible services through web based applications and other Smart City initiatives (such as community television), in tandem with traditional methods of communications (newspapers, newsletters, etc.)		
	Promote the Citizens Information Service as a means for increasing awareness of information services and advocacy.		
Increase public, business and community participation in key city events and festivals.	Actively promote and encourage civic participation in city strategies, events and festivals.		

Enhance and affirm PPN as a key vehicle to represent social inclusion, community, voluntary and environmental interests.	Support the PPN to connect community groups with other community and economic groups active in the city and within their own neighbourhoods.		
	Support the PPN to connect community groups with other community and economic groups active in the city.		
	Support the PPN in developing focused linkage groups that inform the future community and economic development of the city.		
Support the implementation of actions that allow Cork City and region to become a European Centre for Excellence for Inclusive Arts	Support the delivery and implementation of a strategic plan for inclusive arts in Cork City and the wider region through: <ul style="list-style-type: none"> • Participation & expression • Education & accessibility • Innovation & Technology • Branding & Development 		
	Establishment of a network to share, learn and work with each other and helps deliver Cork City as a European Centre for Excellence for Inclusive Arts.		
Facilitate and support the voluntary work of heritage groups and organisations in cork city ad research the development of a volunteer programme for Heritage related work in Cork city	Support and actively engage with heritage groups and organisations to promote the work that is done and encourage new membership. Work with local and national partners in developing a network of suitably qualified volunteers who could assist in implementing heritage projects.		

Table A.4:

Goal: SAFE AND GREEN CITY

To ensure Cork is a safe and green city with a secure and sustainable environment in which to live, work and play.

Objective	Action	Likely significant Effects on European sites	Reference to Protective Policies
Co-ordinate and deliver a safe city.	Support the implementation of the JPC Strategy and structures including Local Policing Fora (LPF) and Community Safety Fora.	No linkage between proposed action and European sites either directly or indirectly. No likelihood of significant effects.	N/A
	Investigate and support the delivery of increased levels of appropriate security in the city.		
	Investigate the feasibility of auditing the safety of problematic public spaces in the city.		
	Support the development of initiatives for access services and disposal of drug using paraphernalia for chaotic drug users.		
Improve pedestrian and cycling life in the city	Deliver a Walking Strategy for the city.	Impacts are not likely to be significant after considering that the requirements of both the CDP and the legislative protection of the areas will be applied successfully. Individual proposals that would pose adverse effects on the integrity of the European Sites would not be permitted.	10.7, 10.8, 10.9, 11.12, 11.13.
	Continue to support the Cork Walks project		
	Continue to pursue greater use and development of cycle ways within the City and wider Region.		
Improve the lighting of public spaces in the city	Investigate the feasibility of delivering a City wide lighting strategy.	Impacts are not likely to be significant after considering that the requirements of both the CDP and the legislative protection of the areas will be applied	10.7, 12.9.

		successfully. Individual proposals that would pose adverse effects on the integrity of the European Sites would not be permitted.	
Improve access to physical spaces in the city for young people (green spaces, youth cafes, etc.)	Research the needs of Cork City youth networks and young people in relation to physical spaces (green spaces, youth cafes, etc.) in the city.	Potentially could lead to positive impacts by creating and maintaining green infrastructure.	N/A
	Make the city friendly for young people by providing secure physical spaces.	No linkage between proposed action and European sites either directly or indirectly. No likelihood of significant effects.	N/A
Actively pursue Green City Status by 2021	Support the improvement of green initiatives in the city that will aim to achieve the Green City Status.	Potentially could lead to positive impacts by creating and maintaining green infrastructure and address the adverse effects of climate change.	N/A
	Support and promote the implementation of the Cork City Climate Change Strategy		
	Support the implementation of appropriate flood relief measures that actively address current and future flooding in the city		
	Support the implementation of Energy management initiative in the city		
Actively co-ordinate and support the delivery of a safe and green city accessible to all.	Support and co-ordinate the delivery of an accessible city through information sharing and promotion.		
Improve and increase the accessibility and visibility of food growing in the city	Support the delivery of edible growing initiatives in appropriate locations in the city.	No linkage between proposed action and European sites either directly or indirectly. No likelihood of significant effects.	N/A

Support the implementation of best practice Bio-diversity in the City	To support the continued delivery of the Biodiversity Plan actions incorporated into the Cork City cycling Plan 2015-2020 and any subsequent review of this plan.	Potentially could lead to positive impacts by providing means of biodiversity protection, enhancement and creation.	N/A
---	---	---	-----

Table A.5:
Goal: SOCIAL ECONOMY

To ensure the vibrant social economy sector is supported and enhanced.

Objective	Action	Likely significant Effects on European sites	Reference to Protective Policies
Develop an Interagency Social Enterprise Strategy to support the retention and expansion of existing social enterprises and the development of new social enterprises	Deliver and support an inter-agency group to develop a Social Enterprise Strategy.	No linkage between proposed action and European sites either directly or indirectly. No likelihood of significant effects.	N/A
	Deliver and support a Social Enterprise Development Co-ordinator/animater for the City and a Multi-Agency forum to drive the delivery and implementation of a social enterprise strategy.		
	Co-ordinate the delivery of a study on the economic and social impact and benefits of the social economy (including Community Employment) in Cork City and its potential to expand.		
	Raise awareness among the private, public and community sector of the benefits of the social economy sector and promote the use of Social economy champions for Cork City.		
	Increase linkages between private sector employers and social and community enterprises and activities in the City in order to increase the impacts of social economy.		
	Evaluates the Boomerang Enterprises and explore its potential to be rolled out nationally and extended to other forms of re-use.		
	Raise awareness of the supports, specialist knowledge and funding sources available to develop social		

	enterprises within marginalised communities.		
Support initiatives for specific groups that face challenges, such as young people, Travellers, homeless, Roma, people with disabilities, lone parents, and new communities.	Support and develop a city wide inter-agency group to promote the employment of Young people, Travellers, Homeless, Roma, and People with Disabilities, lone parents and new communities including a mentoring programme.		
	Promote the availability of any community and business financial supports that can develop social enterprises within marginalised communities.		
Provide employment opportunities for artists and strengthen arts organisations delivering programmes in community settings.	Continue to develop and support opportunities for artists working in the area of early years.		
	Leverage resources to support arts organisations in delivery of community based programmes.		

Table A.6:

Goal: EDUCATION AND LEARNING

To support the culture of learning in Cork by promoting lifelong learning, access to education for all and skills development.

Objective	Action	Likely significant Effects on European sites	Reference to Protective Policies
Create a better quality of life for city residents by Integrating all Initiatives and Actions where possible.	Support inter-agency and cross sector integration initiatives.	No linkage between proposed action and European sites either directly or indirectly. No likelihood of significant effects.	N/A
Support the UNESCO Learning City Project and Strategy	Support and promote the implementation of the Cork UNESCO Learning City Strategy and Actions.		
	Work with UNESCO Institute of Lifelong Learning and the Global Network of Learning Cities GNLC towards the achievement of a UNESCO designation of Cork as a City of Learning.		
	Support the Learning City Working Group GLLiC - Growing Lifelong Learning in Cork - strategy and actions.		
Support initiatives that bring all stakeholders in education and learning together	Support Learning City Seminars, Round Tables and Conferences, including International Learning City Exchange Opportunities.		
	Support integration and linking between projects with a learning dimension and Learning City structures, partners and strategies.		
Support the development and strengthening of the Cork Lifelong Learning Festival	Support the Lifelong Learning Festival Development Plans.		
Support the development and strengthening of the Learning Neighbourhoods programme	Support the expansion of the Learning Neighbourhoods initiative to encourage wider participation in lifelong learning.		

Support Community Education Networks and Forum	Actively promote and resource Community Education Networks to provide co-ordinated accessible education and training opportunities for all ages.		
	Support the Cork Community Education Forum Strategic Plan and Actions.		
Support strategies developed by educational partners to increase access to higher education in communities with low participation levels	Support Access strategies of Higher and Further Education Colleges in the City.		
	Develop a city higher education access strategy towards making education accessible for all through an inter-agency group.		
Support interagency projects that seek to make access to arts education available to all.	Support the sustainability and expansion of Music Generation Cork City in providing Music Learning access for all young people.		
	Support the Cork Music Education Partnership strategy and plans.		
	Investigate opportunities to transfer the Music Generation Cork City model into other areas of arts provision and arts education in the city.		
Support strategies developed by inter-agency partners to tackle educational disadvantage	Support inter agency initiatives that target increased and enhanced participation by target groups in mainstream education focussed on groups among the following: <ul style="list-style-type: none"> • Travellers • People with disabilities • Migrants without English as a first language • Young unemployed adults • Roma • Homeless 		
	Support DEIS and other school programmes and initiatives that are targeted at educational disadvantage.		
	Support the integration and development of a network of English Language schools and colleges, with a particular focus on English		

	language provision for social inclusion.		
	Support the development and sustainability of the ACCESS Initiative for young unemployed.		
	Develop stronger links with employers for young people undertaking training programmes, to enhance employment prospects by allowing them to gain valuable work experience.		
Support initiatives that promote increased participation in STEAM	Link with initiatives that promote STEAM, develop opportunities and new methods for increasing participation in Science Technology Engineering Arts and Maths, particularly by under-represented young people.		
Support the use of focussed Research and Evaluation as a means of developing and enhancing inclusive education initiatives.	Support the increased use of appropriate third level research and evaluation capacity including UCC CARL programme, similar research initiatives in CIT and elsewhere.		
Support creative learning opportunities for 0 to 3 year olds and enhance early year's education and learning.	Support the strategies, plans and actions of early years education and childcare organisations.		
	Support and expand the BEAG Early Years Arts Development project.		
	Support and expand the Young Knocknaheeny and Happy Talk programme and other similar initiatives.		
Support the expanded use of the arts and creativity programmes to engage with socially excluded groups.	Enhance the experience and engagement of artists with disabilities and support the participation of arts and disability organisations to participate in the lifelong learning festival, EcCoWeLL and UNESCO City of Learning actions.		
Support the Cork City Libraries Service	Deliver the objectives and actions set out in the Cork City Strategy for Public Libraries 2013-2017		
	Promote the awareness of libraries as centres for community development, learning and interaction at a local level within the		

	City		
Support the implementation of the objectives under Goal 3 of the Cork City Heritage Plan “Support education research and training”.	Develop a heritage research plan with existing 3rd level educational bodies.		
	Support the provision of heritage training to communities. Promote heritage in the school		

Table A.7:

Goal: SOCIAL INCLUSION AND EQUALITY

To reduce the marginalisation of specific communities within the city, taking into account the nine grounds and socio economic status.

Objective	Action	Likely significant Effects on European sites	Reference to Protective Policies
Promote and support Social Inclusion and Equality inter-agency initiatives in the city through the LCDC.	Provide a forum for facilitating and overcoming any barriers in the delivery of all Social Inclusion and Equality strategies in the City.	No linkage between proposed action and European sites either directly or indirectly. No likelihood of significant effects.	N/A
	Support and monitor the SICAP programme.		
Continue to support the Traveller community in the City.	Support the work of the Traveller's Interagency Strategy, including the: <ul style="list-style-type: none"> The Traveller Education Sub-group The Traveller Cultural Awareness Group 		
	Support the participation of the Traveller Community in all structures that impact their lives, health and wellbeing including the promotion of traveller culture and support for Traveller Pride Week.		
	Support the work of the Local Traveller Accommodation Committee		
Promote LGBT equality in Cork City	Support LGBT Inter-agency group.		
	Continue to promote and support delivery of LGBT Awareness week amongst Public Sector bodies and State Agencies		
	Continue to develop links with Cork Pride and deliver an LGBT Festival annually		
Promote a culture of anti-discrimination in Cork City through of the Public Sector Human Rights and Equality Duty in Cork	Promote Equality and Social Equity in the City through <ul style="list-style-type: none"> Providing continuing training to State Agencies, Private Sector and Community 		

City.	<p>Groups on Equality and Human Rights Obligations.</p> <ul style="list-style-type: none"> • Undertaking an equality proofing review of public policies. 		
	Set up an Equality Sub-committee to strengthen the LCDC's contribution to equality and social inclusion via mechanisms such as SICAP and other government programmes delivered through LCDCs.		
	Co-ordinate a Cork Equality Day (a CESCA initiative), building to a weeklong Equality Festival through the life span of the LECP.		
Continue to implement the RAPID programme; targeting the most disadvantaged communities in the City.	Establish a new RAPID Area Based Committee structure.		
	Continue to deliver the community wardens and community grants services.		
To fully develop the potential of Cork as a diverse, inclusive and multi-cultural city.	Promote a culture of anti-discrimination in Cork City by developing a clear strategy, action and monitoring plan for the integration of ethnic minority communities, including robust anti discrimination and equality measures.		
	Develop targeted measures and supports to address the needs of particularly vulnerable ethnic minority groups - such as Asylum Seekers, The Roma Community and Migrant Women.		
	Promote the delivery of festivals and awareness events on specific communities/issues to wider city population, e.g. Africa Day, Diversity Days etc.		
	Investigate possible shared physical community space in city centre that marginalised communities, new communities would have ease of access to for own events.		

	Promote the Yellow Flag Programme in schools, expanding the number of schools adopting the programme.		
Support the implementation of Nationally driven Social Inclusion measures.	<p>Deliver and support Social Inclusion programmes such as;</p> <ul style="list-style-type: none"> • Continue to support and review the SICAP plan 2015-2017. • Local Employment Service • Community Outreach Drugs Awareness Programme • Tús Programme • Simon Social Inclusion Programme • Friendly Call service • Asylum Seekers Outreach Service • 0-6 Childcare network training and advice and information • And other programmes 		
Promote awareness of disability issues in Cork City.	Support a People with Disabilities Interagency Group.		
	Develop and support of an online information source, detailing accessibility levels of places and spaces in the City.		

Table A.8:

Goal: CHILDREN AND YOUNG PEOPLE

To develop integrated responses to the needs of children and young people and improve outcomes through local interagency working.

Objective	Action	Likely significant Effects on European sites	Reference to Protective Policies
Support the Children and Young Person's Services Committee (CYPSC) strategy; assist in developing needs analysis of children and young people, the mapping of services and resources needed to implement the strategy.	Strengthen the interagency approach and co-operation to deliver the CYPSC strategy.	No linkage between proposed action and European sites either directly or indirectly. No likelihood of significant effects.	N/A
	Continue to support the co-ordination of youth work organisations within the city.		
Prioritise and focus on the emotional and mental wellbeing of children and young people in the city.	Support programmes and initiatives that seek to improve the emotional and mental wellbeing of children and young people in the city.		
Prioritise and focus on opportunities to support and secure the wellbeing of children and young people in the city.	To provide all children and young people in the city with music education by resourcing and supporting Music Generation and Music Education Partnership.		
	Develop and support access to youth cafes.		
	Resource and develop multi-activity camps.		
	Promote maritime activities for children and young people.		
	Support and promote the development of the JIGSAW programme in the City.		
	Support the provision of heritage training to		

	communities. Promote heritage in the school		
Support and prioritise early year's education provision.	Set up an inter-agency group to develop and co-ordinate a programme of youth activities and supports across the city, with an emphasis on disadvantaged areas.		
Support community based prevention and early intervention initiative in the City.	Support EU Urban innovative actions proposal focussing on nurturing city concept.		
	Provide fora for sharing of best practice and learning from north side initiatives across the city, e.g. Young Knocknaheeny and Happy Talk.		
Improve the sustainability of childcare provision in the city.	Support the development of a new model of managing community childcare as a key initiative in the city.		
	Support the development of an affordable model of full day provision to enable parents attend work or training.		
	Investigate the delivery of supports for services for children under 3.		
Support the delivery of the Strengthening Families approach in Cork City.	Provide opportunities for parents, young people and their carers to access supports to evidence based programmes such as strengthening families programme.		
Strengthen the recognised role of Youth Organisations in the development and implementation of youth initiatives in the city.	Continue to support the coordination of youth organisations in the city.		
	Engage youth organisations in the consultation, promotion and co-ordination of youth initiatives in the city.		

Support the delivery of actives spaces, recreation and play areas in the City	Review the existing Cork Recreational Needs Study (2003) and Cork City Parks Strategy (2000) to guide the future needs requirements of young people in the City.		
Support the delivery of Mentoring programs for young people in the City	Consider the need and delivery methods for broader mentoring programmes and training in resilience and coping skills for young people in the city.		

Table A.9:

Goal: OLDER PEOPLE

To develop integrated responses to the needs of older people, promoting their inclusion and contribution in all areas of life and responding.

Objective	Action	Likely significant Effects on European sites	Reference to Protective Policies
Actively promote the Age Friendly Strategy	Ensure all agencies support the Age Friendly Strategy and implement its goals and actions.	No linkage between proposed action and European sites either directly or indirectly. No likelihood of significant effects.	N/A
Promote and support a volunteering policy for older people.	Provide access and opportunities to volunteer and identify any barriers and seek solutions		
	Lobby Dept of Social Protection, National Government to increase opportunity to work past age of 65 in a way which will not negatively influence one's social welfare payments.		
To support the Cork Age Friendly Business Programme.	To raise awareness in the public and private sector through training on the needs of elderly people in the development of policies, programmes and services.		
Promote awareness of consultation approaches to include Older people	Develop links with Cork Older Peoples forum and provide a platform for age related matters to be raised at city level.		
	Support the Cork Older Peoples Forum to fully participate in the PPN structure		
Provide a responsive approach to Older Peoples housing needs	Develop a needs analysis on variety of accommodation types that allow older persons the option to downsize within their local community		
	Develop a directory of services for older people that will provide flexible, easily updateable information.		
	Enable older people to live in their own homes and communities by providing the necessary supports and		

	services as well as suitable housing in the right locations.		
Support community participation, mentoring and volunteerism for older persons in the City	Co-ordinate and promote increased levels of community participation, mentoring and volunteerism by older persons in the City.		
	Actively support, work towards and promote Cork City as a Dementia friendly city.		
Support community based care facilities for older people with an ethos of integration and continued learning and independence	Investigate the feasibility of providing a community based, collective living model for older persons in the City as a viable alternative to traditional care facilities.		
Support the delivery of actives spaces, recreation and play areas in the city	Review the existing Cork Recreational Needs Study (2003) and Cork City Parks Strategy (2000) to guide the future needs requirements of older people in the City		
Support the delivery of smart living technologies within housing for older persons in the City	Explore the implementation of assisted living technologies and herotage testbed for trialling of such innovations within housing for older persons in the City		

Table A.10:

Goal: ECONOMIC DIVERSITY

Support the maintenance of a diverse economic base within the city

Objective	Action	Likely significant Effects on European sites	Reference to Protective Policies
Stimulate the further development of the City Centre and support it as the main employment and retail location	Develop the city centre economy through a range of actions developed through the CORE and City Centre Forum.	These Objectives and Actions lack geographic specificity and detail which prevents any clear linkages being identified. Whilst certain types of development in certain locations in the City could potentially interact with the European sites, any potential impacts are comprehensively addressed by the protective policies within the Plan. Individual proposals that would pose adverse effects on the integrity of the European Sites would not be permitted.	10.7, 10.8, 10.9, 10.12, 11.5, 11.6, 11.12.
	Support the development and operation of traders' associations in the City Centre.		
	Actively promote Cork City Centre in the Cork City Region and beyond, as the main retail, cultural and entertainment centre for the region.		
	Promote Cork City as a location for inward investment.		
Facilitate the provision of a range of property options to meet the needs of businesses at all stages of development – from startup, incubation and grow-on to mid-sized and large floorplate	Through the City Development Plan identify a range of suitable locations to facilitate businesses in a wide range of sectors.		
	Develop co working space in the city centre.		
	Secure the continued redevelopment of the City Harbour/Docklands area		
	Promote economic and general development in the city centre through targeted financial incentives and supports including facilitation of testbeds		
Strengthen Cork's enterprise base through	Provide a business information and advisory service		

the provision of a first stop shop to support the establishment of new businesses and growth of existing local enterprises	Provide a range of enterprise support services designed to maximise business potential and support the long term sustainability of enterprise and creation of jobs		
Promote Cork internationally as the location to place to invest, work, study, live and visit	Implement the Cork strategic messaging and branding project		
	Promote Cork as a location for inward investment		
	Make Cork a “must visit” destination through implementation of the collective strategy for Growing Tourism in Cork		
	Continue to enhance and develop Cork City’s tourism offer		
	Promote Cork as a destination for business tourism (conferences, meetings etc)		

Table A.11:

Goal: INNOVATION

Support innovation in the local economy

Objective	Action	Likely significant Effects on European sites	Reference to Protective Policies
Support the creation of an innovation friendly culture in the city	Support it@cork, the European Tech Cluster	No linkage between proposed action and European sites either directly or indirectly. No likelihood of significant effects.	N/A
	Facilitate provision of city centre start up space for tech companies, building on the success of Formalab		
	Facilitate the establishment of data centre in Cork.		
	Support innovation in the local economy and local community that recognises arts and creative activity as drivers for growth.		
Support the development of new and existing clusters	Build on and exploit Cork's strengths in the food and drink sector in a responsible and sustainable manner.		
	Support the continued development of creative industries and cultural/artistic sectors, which are drivers of innovation in the local economy and community.		
	Continue to support the growth of Energy Cork as an exemplar industry cluster in the energy sector – leading to economic growth and job creation in the sector and advancing Cork's unique position at the forefront of energy innovation in Ireland		
	Support the following clusters as outlined in the SW Regional Action Plan for Jobs: <ul style="list-style-type: none"> Convergent Life Sciences and Health 		

	<ul style="list-style-type: none"> • Global Business Services • Tourism • Marine, Energy and Natural resources • Consumer food <p>And cross cutting clusters:</p> <ul style="list-style-type: none"> • ICT and Entrepreneurship. • Advanced manufacturing / engineering 		
Further develop entrepreneurship and an enterprise culture in Cork	Develop initiatives to promote youth entrepreneurship		
	Support the provision of a range of entrepreneurship and incubation programmes and activities		
	Develop and promote Cork City as a centre of excellence for entrepreneurship.		
Develop Cork as a Smart Gateway – where digital technologies and smart solutions support better public services for citizens	Support the Cork SMART Gateway initiative		

Table A.12:

Goal: SKILLS & HUMAN CAPITAL

Develop skills within the Cork area to match the needs of existing and future businesses. Provide support services for the unemployed and to help maintain and expand businesses in areas of high unemployment

Objective	Action	Likely significant Effects on European sites	Reference to Protective Policies
Ensure that Cork's education and skills base is aligned with the requirements of industry (FDI and indigenous)	Participate in the work of the Regional Skills Forum which brings together employers and the further and higher education system of the region;	No linkage between proposed action and European sites either directly or indirectly. No likelihood of significant effects.	N/A
Support those who are unemployed to enable them to access education, training and employment	Support the development of targeted employment initiatives at a local level.		
	Pilot the inclusion of social benefit clauses for public bodies		
	Support the implementation of national labour market activation schemes		
Support the retention and growth of existing businesses and the development of new businesses in the city's RAPID areas	Continue to implement the Northside for Business initiative		

Table A.13:

Goal: TRANSPORTATION & COMMUNICATIONS

Support measures to improve transport and telecommunications networks into and around Cork City and region

Objective	Action	Likely significant Effects on European sites	Reference to Protective Policies
Ensure the smart, sustainable and effective movement of people and goods and optimise mobility for all across the available transport network in a sustainable manner that meets the national target for non car modal share	Implement the City Centre Movement strategy	No linkage between proposed action and European sites either directly or indirectly. No likelihood of significant effects.	N/A
	Review and implement the projects associated with the South East Strategic Corridor study	Any review of the SESCOs would require re-examination of the impacts on the European sites. Impacts caused by construction activities and operation of the road are not likely to be significant after considering that the requirements of both the CDP and the legislative protection of the areas will be applied. Individual proposals that would pose adverse effects on the integrity of the European Sites would not be permitted.	10.7, 10.8, 12.3, 12.4.
	Complete the South Western and Central Strategic Corridor study and implement associated projects		
	Complete the Northern Strategic Corridor study and implement associated projects		
	Influence travel demand patterns and choice to support an integrated and sustainable transport system	Not enough geographic specificity to permit accurate impact identification. Impacts are not likely to be significant after considering that the requirements of both the CDP and the legislative protection of the areas will be applied. Individual proposals that would pose adverse effects on the integrity of the European Sites would not be permitted.	10.7, 10.8, 12.3, 12.4.
	Support the implementation of the findings of the Cork Area Transit Study (CATS) in particular to support the identification of a route for the proposed east-west Bus Rapid Transit route (BRT)		
	Further development of Cork cycle network		

	Support the delivery of the Cork City Walking Strategy		
Promote the development of strategic road and public transport infrastructure to enhance connectivity and accessibility within the region	<p>Continue to advocate the critical importance of delivering on a number of schemes including:</p> <ul style="list-style-type: none"> • N28 (Cork to Ringaskiddy) upgrading • Dunkettle interchange upgrade • Northern Ring Rd to complete ring of City • M20 Cork Limerick motorway • N22 Cork to Killarney 	Several of these schemes have already undergone Appropriate Assessment or will require AA Screening and/or full AA. Impacts caused by construction activities and operation of the roads are not likely to be significant after considering that the requirements of both the CDP and the legislative protection of the areas will be applied.	10.7, 10.8, 12.21.
	Support the delivery of public infrastructure projects and initiatives that further enhance Cork City's role as a strategic national gateway and help create more sustainable transport patterns for the region.		
	Support the targeted delivery of regional infrastructure, in particular the delivery of projects which increase the accessibility, connectivity and competitiveness of the Southern Region.		
	Continue to advocate the critical importance of delivering the bridges required for the development of the Cork Docklands.		
Support enhanced connectivity through Cork Airport - the international gateway to the south of Ireland	Work progressively with Cork Airport & stakeholders to develop new routes and increase visitor numbers	Impacts caused by construction activities and operation of the flights are not likely to be significant after considering that the requirements of both the CDP and the legislative protection of the areas will be applied. Any review of the SESCS would require re-examination of the impacts on the European sites. Individual proposals that would pose adverse effects on the integrity of the European Sites would	10.7, 10.8, 12.21.

		not be permitted.	
Promote the opportunities to develop Cork's Information and Communications Technology (ICT) economy, including the use of Smart City technologies.	Reduce the cost of international data transfer from Cork	No linkage between proposed action and European sites either directly or indirectly. No likelihood of significant effects.	N/A
	Increase the latency (speed) of international connections to Cork		
	Support the delivery and maintenance of Tier 1 international connectivity in Cork city and region.		
	Promote availability of the INEX internet neutral exchange		
Support the development of water-based transport	Support Cork County in the development of a passenger ferry from Cobh to Ringaskiddy	Impacts caused by construction activities and operation of the ferry are not likely to be significant after considering that the requirements of both the CDP and the legislative protection of the areas will be applied. Any review of the SESCS would require re-examination of the impacts on the European sites. Individual proposals that would pose adverse effects on the integrity of the European Sites would not be permitted.	10.7, 10.8, 10.9.

Table A.14:
Goal: QUALITY OF PLACE
Build on Cork's strong place quality assets and improve the attractiveness of the city for residents and visitors

Objective	Action	Likely significant Effects on European sites	Reference to Protective Policies
Cork City will be a successful, sustainable regional capital and achieve a high quality of life for its citizens.	Implement the policies and objectives set out in the Cork City Development Plan 2015-2021.	Impacts are not likely to be significant after considering that the requirements of both the CDP and the legislative protection of the areas will be applied. Individual proposals that would pose adverse effects on the integrity of the European Sites would not be permitted.	10.7, 10.8, 10.9, 10.12, 11.5, 11.6, 11.12.
Enhance the vibrancy of Cork City Centre by implementing the City Centre Strategy through the annual City Centre Action Plans.	Develop the character sub areas within the strategy.	Impacts are not likely to be significant after considering that the requirements of both the CDP and the legislative protection of the areas will be applied. Individual proposals that would pose adverse effects on the integrity of the European Sites would not be permitted.	10.7, 10.8, 10.9, 10.12, 11.5, 11.6, 11.12.
	Support the development of the transformational projects identified within the plan.		
Deliver a high quality public realm	Review the Cork City Parks Strategy (2000)	Impacts are not likely to be significant after considering that the requirements of both the CDP and the legislative protection of the areas will be applied. Individual proposals that would pose adverse effects on the integrity of the European Sites would not be permitted.	10.7, 10.8, 10.9, 10.12, 11.5, 11.6, 11.12.
	Deliver the objectives and actions set out in the Cork City Centre Strategy 2014 and Cork City Centre Action Plan 2016 and subsequent annual plans		
Promote the culture and heritage of Cork	Implement the Cork City Heritage Plan 2015-2020	No linkage between proposed action and European sites either directly or	N/A

City	Continue to support a range of festivals, events and arts activities	indirectly. No likelihood of significant effects.	
	Develop and implement a new Arts Strategy that looks to provide support through funding, investment and facilitation so existing venues, projects and programmes can be made more sustainable, and new ideas can be realised.		
	Continue to improve protection and appreciation of the architectural and archaeological heritage of the city.		
	Support the provision of heritage training to communities. Promote heritage in the school.		
	Create a robust, evidence based database of information on the economic value of heritage in the city.		

Table A.15:

Goal: COMPETITIVENESS through STRATEGIC GOVERNANCE

Co-operate with other stakeholders to deliver the strategic governance that drives economic activity within the Cork Gateway and also to maintain the excellent quality of life available in Cork which underpins the Gateway's competitiveness.

Cork's potential to develop further as Ireland's second international gateway city is acknowledged, supported and realised in national and regional policies	Support the development and implementation of the new National Planning Framework	Impacts are not likely to be significant after considering that the requirements of both the CDP and the legislative protection of the areas will be applied. Individual proposals that would pose adverse effects on the integrity of the European Sites would not be permitted.	10.7, 10.8.
	Support appropriate and sustainable synergies between Cork City and other cities and urban centres both nationally and across the Southern Region (e.g. Limerick, Waterford, Tralee-Killarney) that strengthen collective opportunities to attract investment, employment and people to the Southern region. Support the role of Cork City as leader in this regard.		
	Support the development and implementation of the new Regional Spatial and Economic Strategy		
Support the co-ordinated development of the Cork Gateway by providing a non statutory planning framework to enable it to become a leading European city region	Implement the Cork Area Strategic Plan 2001-2020		
	Prepare for successor CASP strategy post 2020.		
Cork City Council, as the organisation with a democratic mandate, will initiate and coordinate activities that support Cork City as a competitive location for economic activities and an economic driver for the region	Identify, initiate and part-fund (with other stakeholders) activities to maintain and enhance Cork's competitiveness.	No linkage between proposed action and European sites either directly or indirectly. No likelihood of significant effects.	N/A

Appendix B: Relevant European Sites

Table B1 Underpinning Conditions and Threats to Qualifying Interests of SACs (European sites within 15km of the site are shown in Figure 1).		
Site name and code	Reasons for designation¹ (*= Priority Habitat) (Sourced from NPWS online Conservation Objectives Generic Version 3.0 for cSACs and 4.0 for SPAs, unless otherwise stated)	
<i>Special Areas of Conservation (SACs)</i>		
Great Island Channel SAC (001058)	<u>Annex I Habitats:</u> <ul style="list-style-type: none"> ▪ Mudflats and sandflats not covered by seawater at low tide [1140] ▪ Atlantic salt meadows (Glauco-Puccinellietalia maritima) [1330] 	Infilling of Intertidal mudflats, Pollution from upstream urbanisation, hard coastal developments. Disturbance from recreational activities at coast and offshore.
Blackwater River (Cork/Waterford) SAC (002170)	<u>Annex I Habitats:</u> <ul style="list-style-type: none"> ▪ Estuaries [1130] ▪ Mudflats and sandflats not covered by seawater at low tide [1140] ▪ Perennial vegetation of stony banks [1220] ▪ Salicornia and other annuals colonising mud and sand [1310] ▪ Atlantic salt meadows (Glauco-Puccinellietalia maritima) [1330] ▪ Mediterranean salt meadows (Juncetalia maritimi) [1410] ▪ Water courses of plain to montane levels with the 	Grazing, Sand & Gravel extraction - Removal of Beach materials, Walking horse riding - non motorised vehicles, outdoor sports & motorised vehicles, other leisure & tourism impacts, Trampling overuse, sea defences & coastal protection works. Erosion, Walking horse riding and non-motorised vehicles, Grazing, Undergrazing, Invasion by a species, , Camping/Caravans, Agricultural Improvement/Restructuring agricultural land holdings, Stock Feeding, , Paths Tracks & Cycling Routes, Golf Courses, Fertilisation.

¹ "Qualifying Interests" for cSACs and "Special Conservation Interests" for SPAs based on relevant Statutory Instruments for each SPA, and NPWS Conservation Objectives for cSACs downloaded from www.npws.ie in April 2014.

Table B1 Underpinning Conditions and Threats to Qualifying Interests of SACs (European sites within 15km of the site are shown in Figure 1).

Site name and code	Reasons for designation ¹ (*= Priority Habitat) (Sourced from NPWS online Conservation Objectives Generic Version 3.0 for cSACs and 4.0 for SPAs, unless otherwise stated)	
	<p>Ranunculion fluitantis and Callitriche-Batrachion vegetation [3260]</p> <ul style="list-style-type: none"> ▪ Old sessile oak woods with Ilex and Blechnum in the British Isles [91A0] ▪ Alluvial forests with <i>Alnus glutinosa</i> and <i>Fraxinus excelsior</i> (Alno-Padion, Alnion incanae, Salicion albae) [91E0] ▪ <i>Taxus baccata</i> woods of the British Isles [91J0] <p><u>Annex II Species:</u></p> <ul style="list-style-type: none"> ▪ <i>Margaritifera margaritifera</i> (Freshwater Pearl Mussel) [1029] ▪ <i>Austropotamobius pallipes</i> (White-clawed Crayfish) [1092] ▪ <i>Petromyzon marinus</i> (Sea Lamprey) [1095] ▪ <i>Lampetra planeri</i> (Brook Lamprey) [1096] ▪ <i>Lampetra fluviatilis</i> (River Lamprey) [1099] ▪ <i>Alosa fallax fallax</i> (Twaiite Shad) [1103] ▪ <i>Salmo salar</i> (Salmon) [1106] ▪ <i>Lutra lutra</i> (Otter) [1355] ▪ <i>Trichomanes speciosum</i> (Killarney Fern) [1421] 	

Table B2 Underpinning Conditions and Threats to Qualifying Interests of Cork Harbour SPA		
Site Name and Code	Qualifying Interests	Threats to Irish Wintering Populations (Except Common Tern) (Birdlife, 2012)
Cork Harbour SPA (4030)	<p><u>Over-wintering populations of international importance:</u></p> <ul style="list-style-type: none"> • Redshank <i>Tringa totanus</i> <p><u>Over-wintering populations of national importance:</u></p> <ul style="list-style-type: none"> • Great Crested Grebe <i>Podiceps cristatus</i> • Cormorant <i>Phalacrocorax carbo</i> • Shelduck <i>Tadorna tadorna</i> • Wigeon <i>Anas penelope</i> • Gadwall <i>Anas strepera</i> • Teal <i>Anas crecca</i> • Northern Pintail <i>Anas acuta</i> • Northern Shoveller <i>Anas clypeata</i> • Red-breasted Merganser <i>Mergus serrator</i> • Oystercatcher <i>Haematopus ostralegus</i> • Lapwing <i>Vanellus vanellus</i> • Dunlin <i>Calidris alpina</i> • Black-tailed Godwit <i>Limosa limosa</i> • Curlew <i>Numenius arquata</i> • Greenshank <i>Tringa nebularia</i> 	<p><u>All species:</u></p> <ul style="list-style-type: none"> • Climate change altering breeding/wintering habitat and feeding resources • Habitat Loss (particularly reclamation of coastal areas) • Flood Alleviation measures leading to changes in tidal regime • Water Pollution • Coastal barrage construction • Human disturbance including construction, vehicles, walkers and dogs • Over-fishing • Soil erosion • Extreme weather events and cold temperatures • Hunting • Windfarm collisions • Avian Botulism <p><u>Species-specific:</u></p> <ul style="list-style-type: none"> • Thinning of egg shells due to chemical pollution (Common Tern); • Egg predation by rats, Peregrine Falcon <i>Falco peregrinus</i> and foxes <i>Vulpes vulpes</i> (Common Tern); • Persecution by aquaculture industry (Cormorant & Grey Heron); • Over-fishing of Benthic shellfish (Oystercatcher).

